



2024

TrailLink Unlimited 

Guides



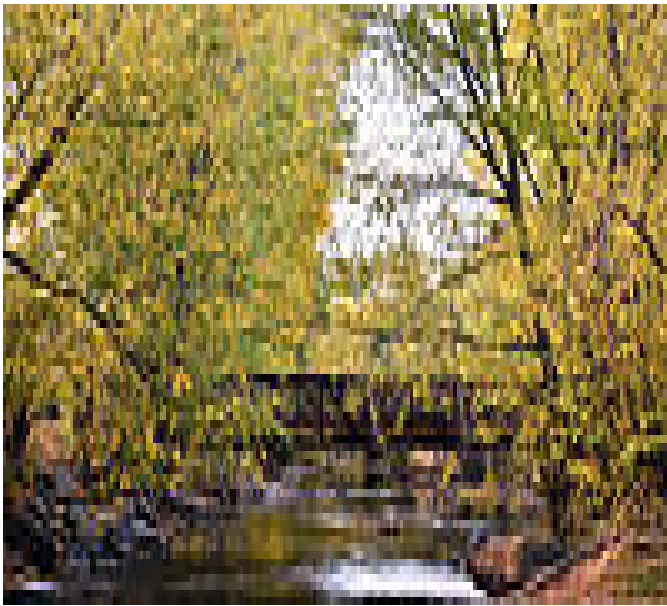
**Leo Adler
Memorial
Parkway**
Oregon



Leo Adler Memorial Parkway

Oregon

The Leo Adler Memorial Parkway offers a paved route of nearly 3 miles through the residential neighborhoods of Baker City in



As the trail approaches D Street, it crosses the river and, at H Street, the trail splits with one fork heading west to the Baker Sports Complex and the other continuing north. The trail ends at Hughes Lane.

The Leo Adler Memorial Parkway offers a paved route of nearly 3 miles through the residential neighborhoods of Baker City in eastern Oregon. The trail begins downtown and heads north along the tree-lined Powder River. When you reach Madison Street, you can take a 3-block on-road side excursion to visit the Leo Adler House Museum. The local millionaire philanthropist for which the trail is named lived in this 1889 building.

North of Madison Street, the trail winds through Geiser-Pollman Park, where you'll find a playground, covered picnic area, and restrooms. The trail also passes the Baker County Public Library and, near the northeast corner of the park, you'll find the Baker Heritage Museum, which has displays about the area's early industrial and agricultural history.



Leo Adler Memorial Parkway

Oregon

States: Oregon

Counties: Baker

Length: 2.6miles

Trail end points: Bridge St., just south of Auburn Ave. to Hughes Ln. and Kirkway St.

Trail surfaces: Asphalt

Trail category: Greenway/Non-RT

Trail activities: Bike, Inline

Skating, Wheelchair Accessible, Walking

Parking & Trail Access

Parking is available at the Baker County Public Library (2400 Resort St.) and at the Baker Sports Complex (at 5th and H Streets).



Leo Adler Memorial Parkway

Oregon



Trailhead



Restroom



Parking



Water Fountain



Tunnel



TrailLink
by Rails-to-Trails Conservancy

TrailLink.com