



2024

TrailLink Unlimited



Guides



## Westview Park Trail

*Iowa*



## Westview Park Trail

Iowa

*A short little trail for biking and walking, the Westview Park Trail runs from the end of a residential street in Donnellson, Iowa to the*



A short little trail for biking and walking, the Westview Park Trail runs from the end of a residential street in Donnellson, Iowa to the city's Westview Park, home to athletic fields, playgrounds, and a disc golf course. Part of the trail runs along a former railroad grade that serviced the rural community in ages past, making this unassuming community trail part of the rails-to-trails movement that has transformed so many corridors throughout Iowa and beyond. Railroad enthusiasts should be sure to check out the city's Railroad Park to learn more about the area history at the depot museum located there.

With open fields to the south and a small forest to the north, the Westview Park Trail offers a nice dose of Iowa nature, as well as a convenient means for residents to get to and from the popular recreation site.



# Westview Park Trail

Iowa

**States:** Iowa

**Counties:** Lee

Length: 0.4miles

**Trail end points:** Burlington St. to Westview  
Park

**Trail surfaces:** Concrete

**Trail category:** Rail-Trail

**Trail activities:** Bike, Inline Skating, Walking

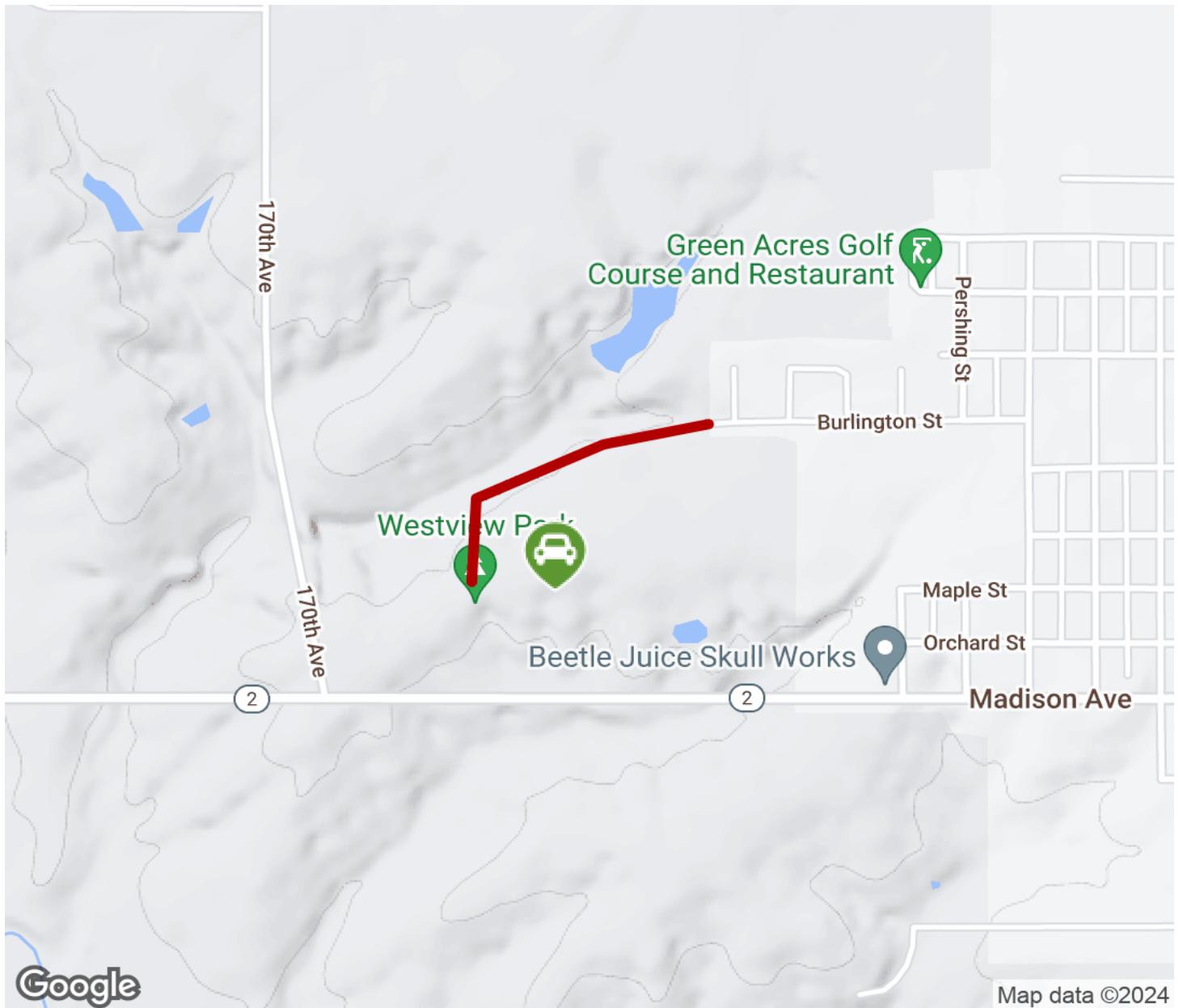
## Parking & Trail Access

Parking is available in Westview Park, located just off Madison Avenue on the southwestern edge of the city, in turn accessible via exit 19 from U.S. Highway 218.



# Westview Park Trail

Iowa



Trailhead



Restroom



Parking



Water Fountain



Tunnel



**TrailLink**  
by Rails-to-Trails Conservancy

**TrailLink.com**