



2024

TrailLink Unlimited



Guides



**Rogers Bridge  
Multi-Use  
Trail**  
*Georgia*



## Rogers Bridge Multi-Use Trail

Georgia

*Rogers Bridge Multi-Use Trail occupies a former roadway leading to the Chattahoochee River. A small trailhead is provided at the*



east side of Bell Road north to the county line.

Rogers Bridge Multi-Use Trail occupies a former roadway leading to the Chattahoochee River. A small trailhead is provided at the beginning of the trail, at Bell Road. The multi-use trail is nicely shaded, ideal for a relaxing walk with your pup, or a quick family bike ride out-and-back. It's also a popular birding trail, with over 135 species of birds having been spotted in the area. The trail edges towards the Chattahoochee River but stops short of it, so that it's not actually visible from the trail. The decommissioned Rogers Truss Bridge lies beyond the trail - it's over a century old and closed to both motorized and non-motorized traffic. The area around the trail, mostly open fields and wetlands today, is the site of the future Cauley Creek Park, which will one day connect across the river to Duluth's Rogers Bridge Park. Another 1.1-mile [shared-use path](#) is located continues along the



# Rogers Bridge Multi-Use Trail

Georgia

**States:** Georgia

**Counties:** Fulton

Length: 0.9miles

**Trail end points:** Bell Road to 0.9 miles south of  
Bell Road

**Trail surfaces:** Asphalt

**Trail category:** Greenway/Non-RT

**Trail activities:** Bike, Wheelchair  
Accessible, Walking

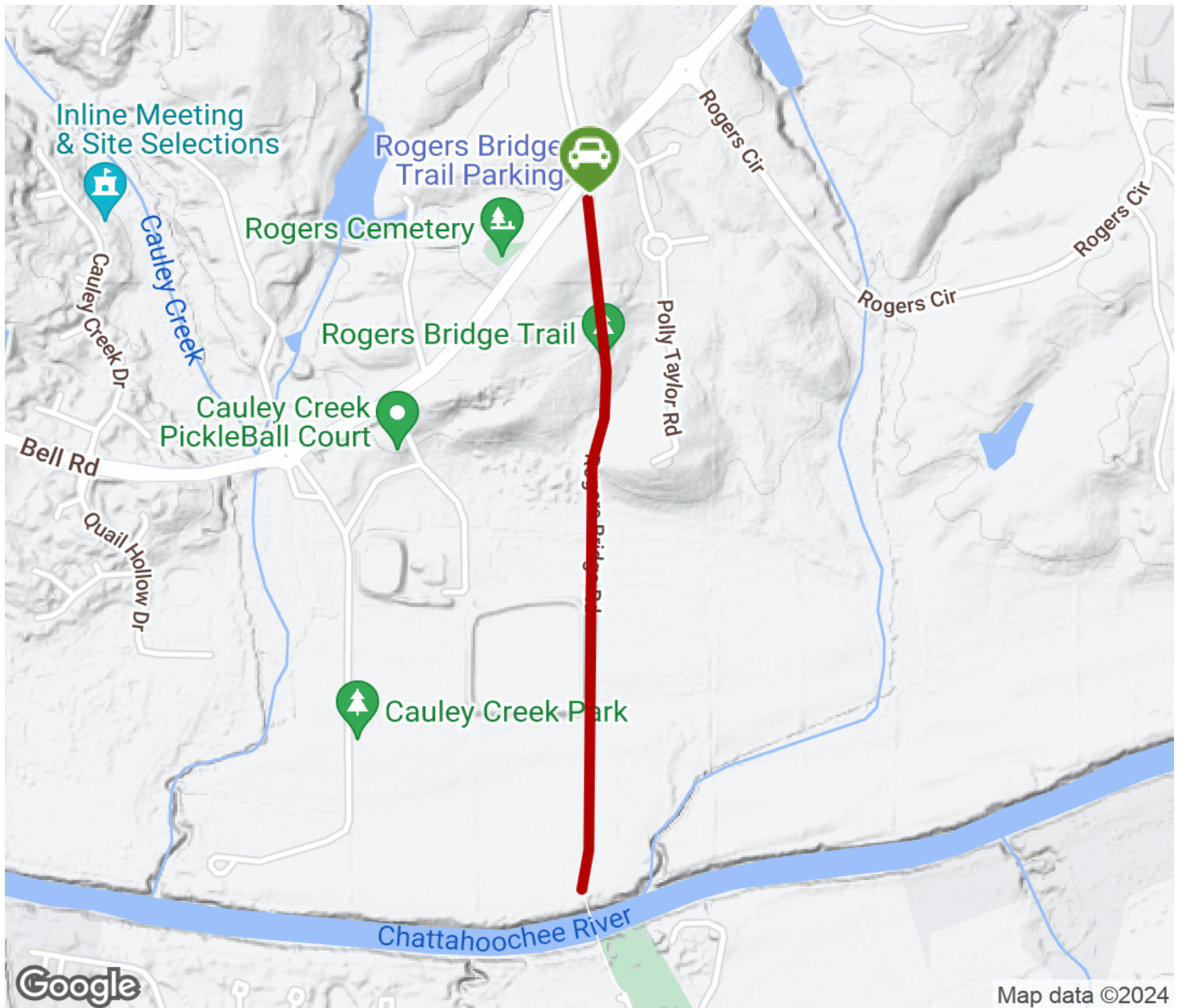
## Parking & Trail Access

There is a small parking area at the intersection of Rogers Bridge Trail and Bell Road. A gate marks the entrance to the trail for pedestrians and cyclists.



# Rogers Bridge Multi-Use Trail

Georgia



Trailhead



Restroom



Parking



Water Fountain



Tunnel



**TrailLink**  
by Rails-to-Trails Conservancy

**TrailLink.com**