



2024

TrailLink Unlimited



Guides



# Independence Creek Trail

*Kansas*



## Independence Creek Trail

Kansas

*This gravel hike-and-bike trail sits atop the levy that runs along Independence Creek. At its northern end, the trail is connected to*



This gravel hike-and-bike trail sits atop the levy that runs along Independence Creek. At its northern end, the trail is connected to the Lewis and Clark Independence Creek Historic Site by a pedestrian bridge spanning the creek. The historic site located about five miles from downtown Atchison and marks the spot where the two explorers camped on their famous expedition in 1804. The 13-acre historic site features a recreation of a Kanza Indian Earthlodge, as well as interpretive signage.



# Independence Creek Trail

*Kansas*

**States:** Kansas

**Counties:** Atchison, Doniphan

Length: 2.3 miles

**Trail end points:** Lewis and Clark  
Independence Creek Historic Site to River Road

**Trail surfaces:** Gravel

**Trail category:** Greenway/Non-RT

**Trail activities:** Bike, Horseback  
Riding, Walking

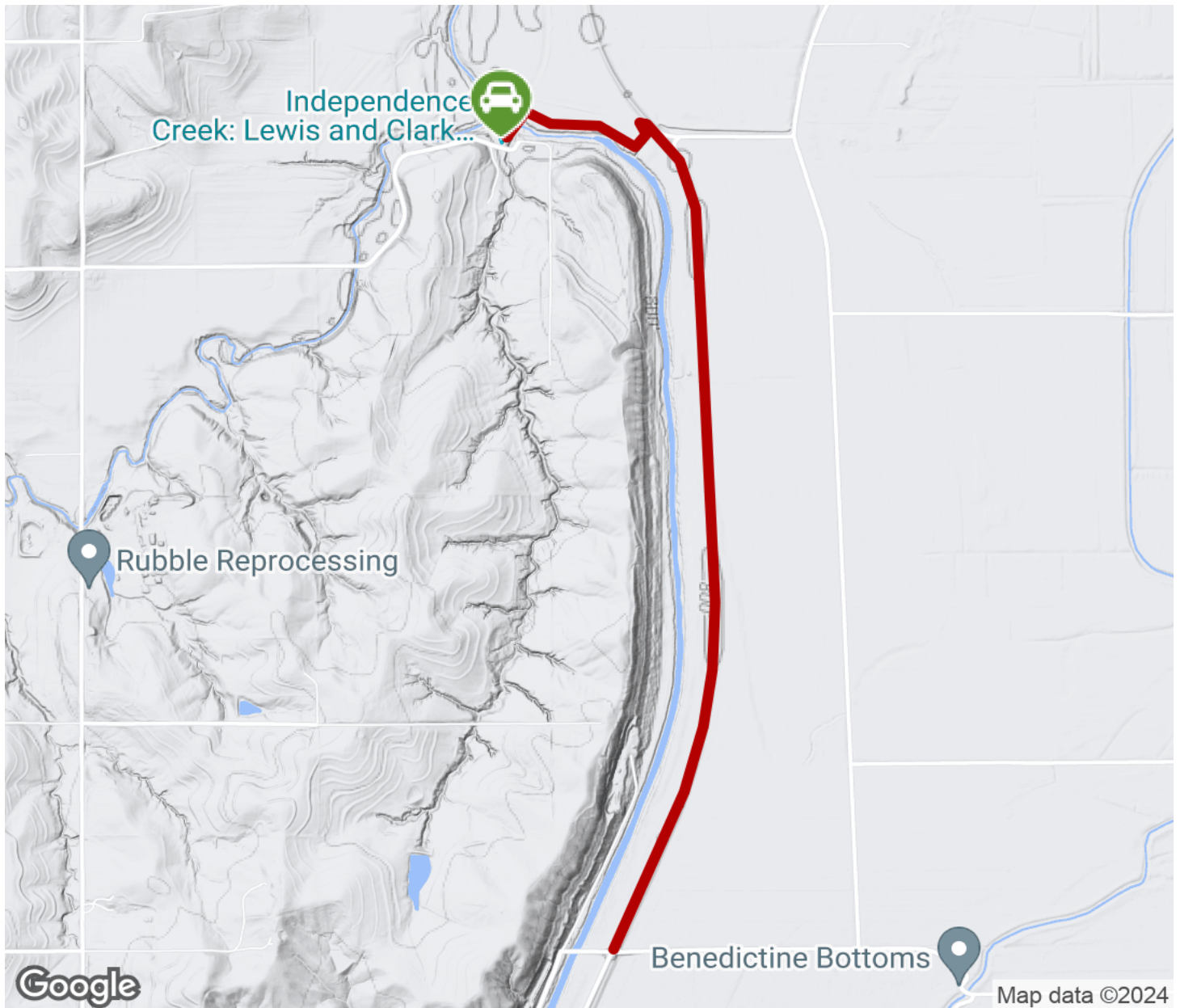
## Parking & Trail Access

North end: You can park at the Lewis and Clark Historic Site (19918 314th Rd, Atchison) and use the pedestrian bridge to access the trail. Beginning from downtown, drive north on 2nd Street, continuing onto Sedgewick Road. Take a right on 314th Road to the site. The parking lot will be on your left.



# Independence Creek Trail

Kansas



Map data ©2024



Trailhead



Restroom



Parking



Water Fountain



Tunnel



**TrailLink**  
by Rails-to-Trails Conservancy

**TrailLink.com**