



2024

TrailLink Unlimited



Guides



**Hamrick  
Station Trail**  
*Indiana*



# Hamrick Station Trail

Indiana

*Overview The Hamrick Station Trail is a 3.1-mile rail trail in Putnam County, IN. It is a rural trail with a dirt and grass 10ft wide*



About two miles from the trailhead, the trail begins to curve north alongside Big Walnut Creek following the former railroad right-of-way. The end of the trail is marked with a stop sign and informative plaque reminding users to turn around.

## Connections

The Hamrick Station Trail is part of the local People's Pathways/National Road Historic Trail, a Putnam County Trail Network.

## Trail History

The Hamrick Station Trail is named after Ambrose Dudley Hamrick, a former Indiana State Legislature representative. He also formerly served as the postmaster of Hamrick Station, which was located where the trail's current trailhead is located.

## Overview

The Hamrick Station Trail is a 3.1-mile rail trail in Putnam County, IN. It is a rural trail with a dirt and grass 10ft wide surface and only allows foot traffic.

## About the Route

The Hamrick Station Trail is an out-and-back trail with only one access point on its eastern end along S County Rd 375 W. Here, along with parking, an information kiosk is available for trail users. From here, the trail travels south along the flat and wide former railroad corridor. The path is rural, wooded, and shaded for its entire route. Farms along the way dot the landscape in the distance.



# Hamrick Station Trail

*Indiana*

**States:** Indiana

**Counties:** Putnam

Length: 3.1miles

**Trail end points:** 5737 S County Rd 375 W (Greencastle) to Dead end near Big Walnut Creek

**Trail surfaces:** Dirt, Grass

**Trail category:** Rail-Trail

**Trail activities:** Walking

## Parking & Trail Access

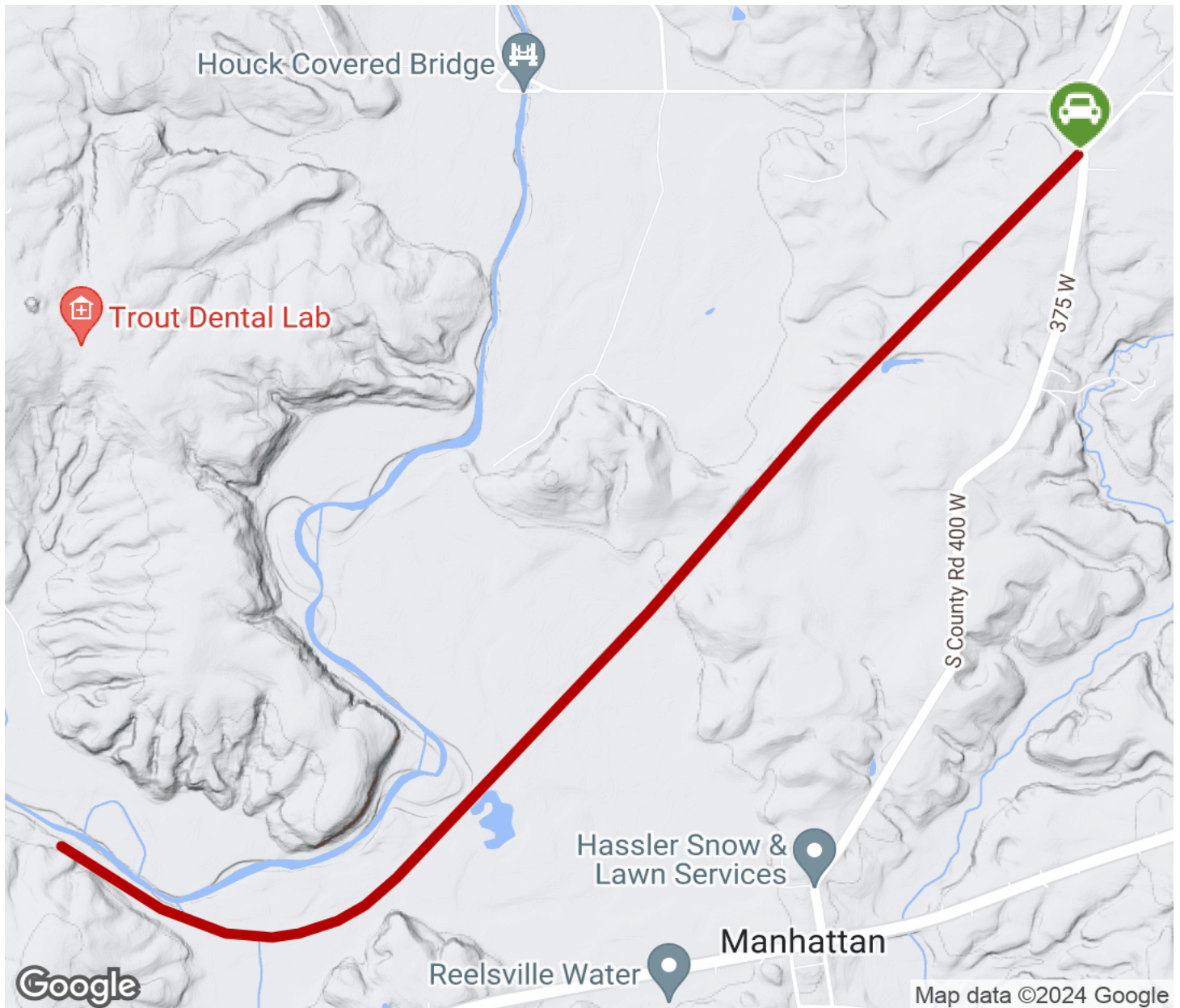
The Hamrick Station Trail runs between 5737 S County Rd 375 W (Greencastle) and a dead end near Big Walnut Creek. This is an out-and-back trail with access and parking only at S County Rd 375 W.

See TrailLink Map for detailed directions.



# Hamrick Station Trail

Indiana



Trailhead



Restroom



Parking



Water Fountain



Tunnel



**TrailLink**  
by Rails-to-Trails Conservancy

**TrailLink.com**