



2024

TrailLink Unlimited 

Guides



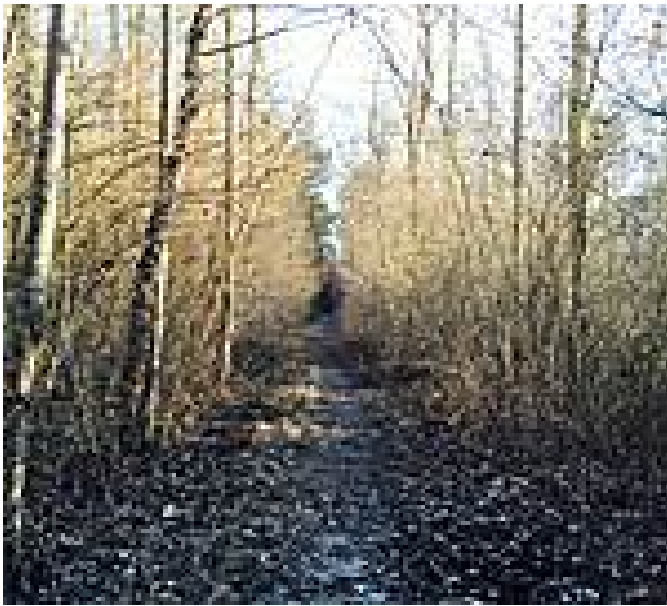
**Eagle Spur  
Rail-Trail**  
*North Carolina*



## Eagle Spur Rail-Trail

North Carolina

*The Eagle Spur Rail-Trail follows 2.2 miles of the former Durham-New Hill Railroad, from Stagecoach Road along New Hope Creek*



The Eagle Spur Rail-Trail follows 2.2 miles of the former Durham-New Hill Railroad, from Stagecoach Road along New Hope Creek to Jordan Lake.

When you're done exploring the Eagle Spur, cross over SR 751 and head north a short distance to Massey Chapel Road, where you can jump on the [American Tobacco Trail](#).



# Eagle Spur Rail-Trail

*North Carolina*

**States:** North Carolina

**Counties:** Chatham, Durham

Length: 2.3 miles

**Trail end points:** Stage Coach Road to Jordan Lake

**Trail surfaces:** Dirt

**Trail category:** Rail-Trail

**Trail activities:** Bike, Wheelchair

Accessible, Mountain Biking, Walking, Cross Country Skiing

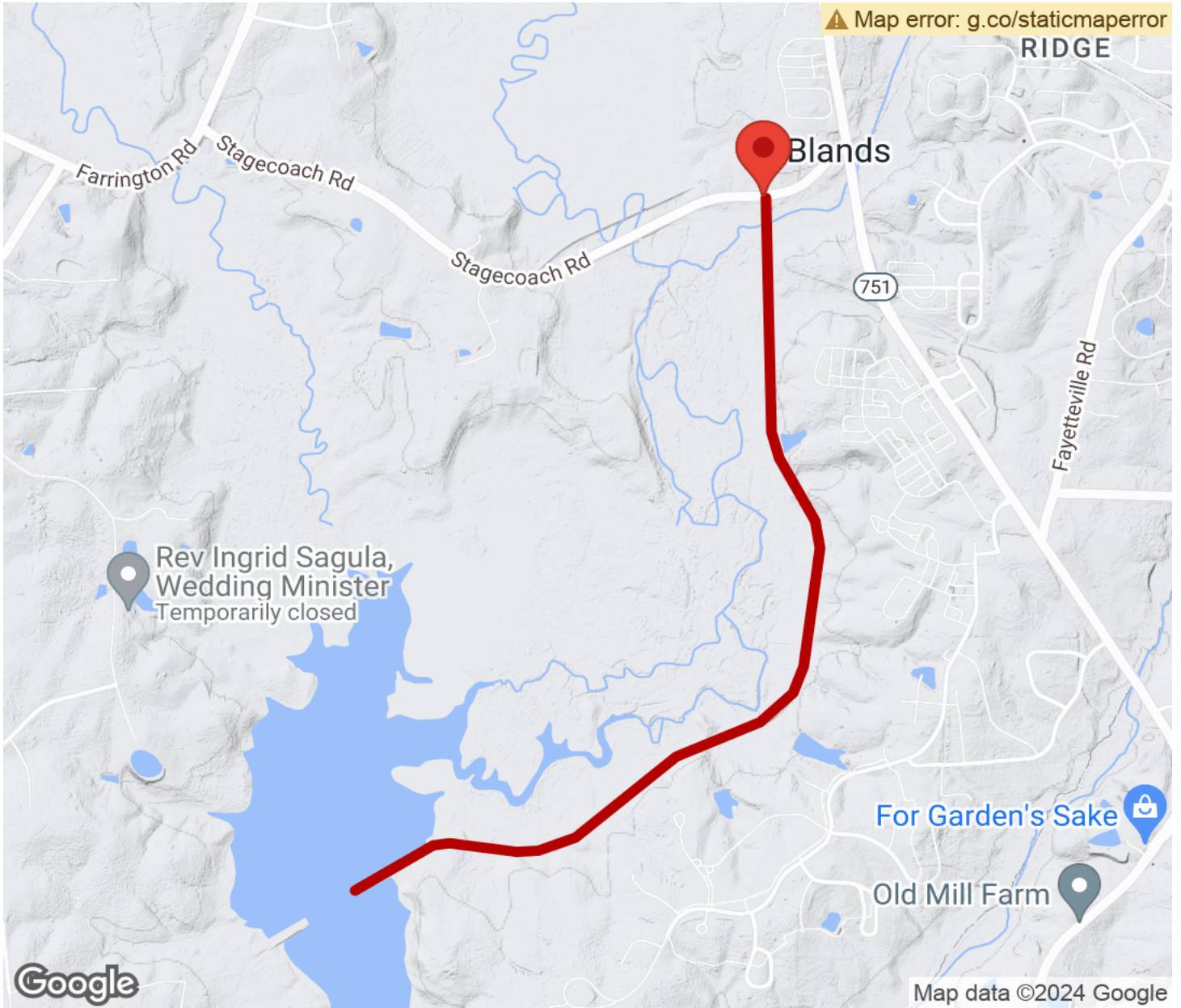
## Parking & Trail Access

The trail can be accessed from from Stagecoach Road in Durham.



# Eagle Spur Rail-Trail

North Carolina



Trailhead



Restroom



Parking



Water Fountain



Tunnel



**TrailLink**  
by Rails-to-Trails Conservancy

**TrailLink.com**