



2024

TrailLink Unlimited



Guides



## Main Trail

*Michigan*



## Main Trail

Michigan

*The Main Trail runs for just 0.5 mile along an east-west corridor through the Whitehouse Nature Center. The trail links a series of*



The Main Trail runs for just 0.5 mile along an east-west corridor through the Whitehouse Nature Center. The trail links a series of loop trails through the nature center and begins at the visitor center off Farley Road. The 135-acre Whitehouse Nature Center is run by Albion College as an outdoor education facility.



## Main Trail

*Michigan*

**States:** Michigan

**Counties:** Calhoun

Length: 0.5miles

**Trail end points:** 29.5-Mile/Newburg Rd. to  
Whitehouse Nature Center, Farley Dr. (Albion)

**Trail surfaces:** Dirt,Grass,Gravel,Woodchips

**Trail category:** Rail-Trail

**Trail activities:** Walking

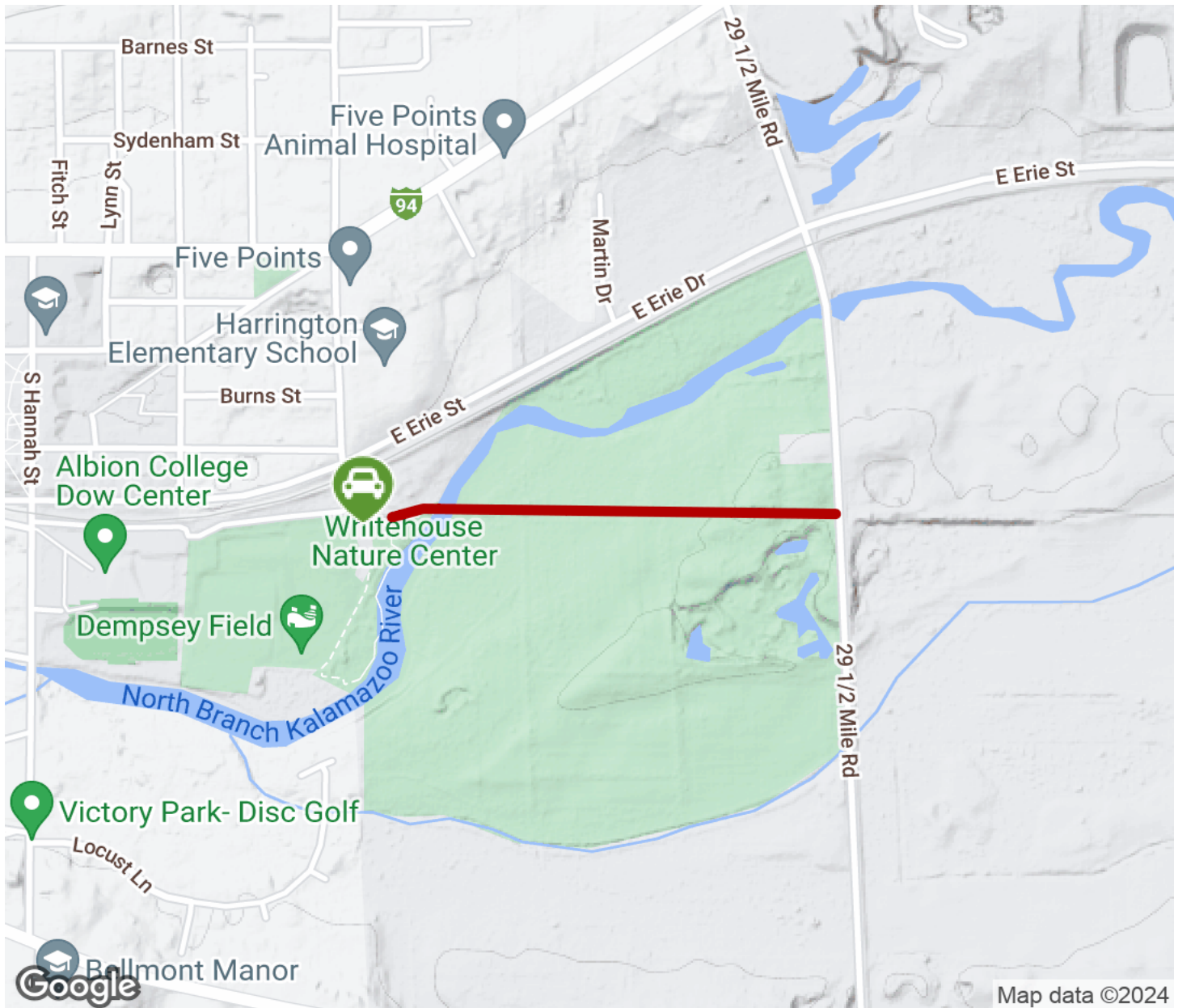
## Parking & Trail Access

The Nature Center is located off Farley Drive. From I-94, take Exits 121 or 124 and go 0.25 mile southeast of the Albion College campus (Hannah Street). The center is along the North Branch of the Kalamazoo River.



# Main Trail

Michigan



Trailhead



Restroom



Parking



Water Fountain



Tunnel



# TrailLink

by Rails-to-Trails Conservancy

[TrailLink.com](https://www.TrailLink.com)