



2024

TrailLink Unlimited



Guides



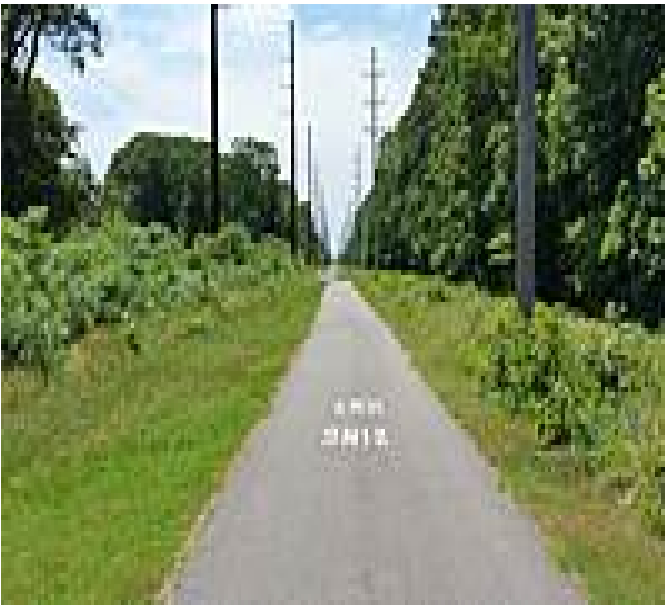
**Middle  
Township  
Bike Path**  
*New Jersey*



## Middle Township Bike Path

New Jersey

*Cape May's 13-mile Middle Township Bike Path and 2.7-mile Cold Spring Bike Path were fully connected in summer 2017. Riders can*



begins in Erma, where you'll notice many idyllic camping areas and wineries to the east and west. Heading north from there, you'll pass through the Rio Grande community. The homes begin to grow scarce as you enter the woods through Middle Township. You may even run across a bunny or deer as you continue past the Cape May County Park & Zoo. If you are here in the spring or summer, you'll enjoy a beautiful display of wildflowers and butterflies along the trail. Zoo admission is free, as is parking for cars.

The trail's northern endpoint meets the southern end of the [Dennis Township Bike Path](#) at the border of the Middle and Dennis Townships.

Cape May's 13-mile Middle Township Bike Path and 2.7-mile [Cold Spring Bike Path](#) were fully connected in summer 2017. Riders can begin their journey at US 9/ Sandman Boulevard in Lower Township across the street from the local elementary school and ride it just over 11 miles north to the Cape May County Park & Zoo. The trail pairing acts as a backbone for the 16 municipalities that surround it, and future spur trails will connect even more communities and local attractions.

The Jersey shore was a major vacation destination for residents of the Delaware Valley region throughout the early 20th century; the Middle Township Bike Path follows a former rail line that once serviced these tourists.

On its southern end, the Middle Township Bike Path



# Middle Township Bike Path

New Jersey

**States:** New Jersey

**Counties:** Cape May

Length: 13miles

**Trail end points:** Dennis Township Bike Path at the border of Middle & Dennis Townships to Cold Spring Bike Path at Seashore Road (Erma)

**Trail surfaces:** Asphalt

**Trail category:** Rail-Trail

**Trail activities:** Bike,Inline

Skating, Wheelchair Accessible, Walking

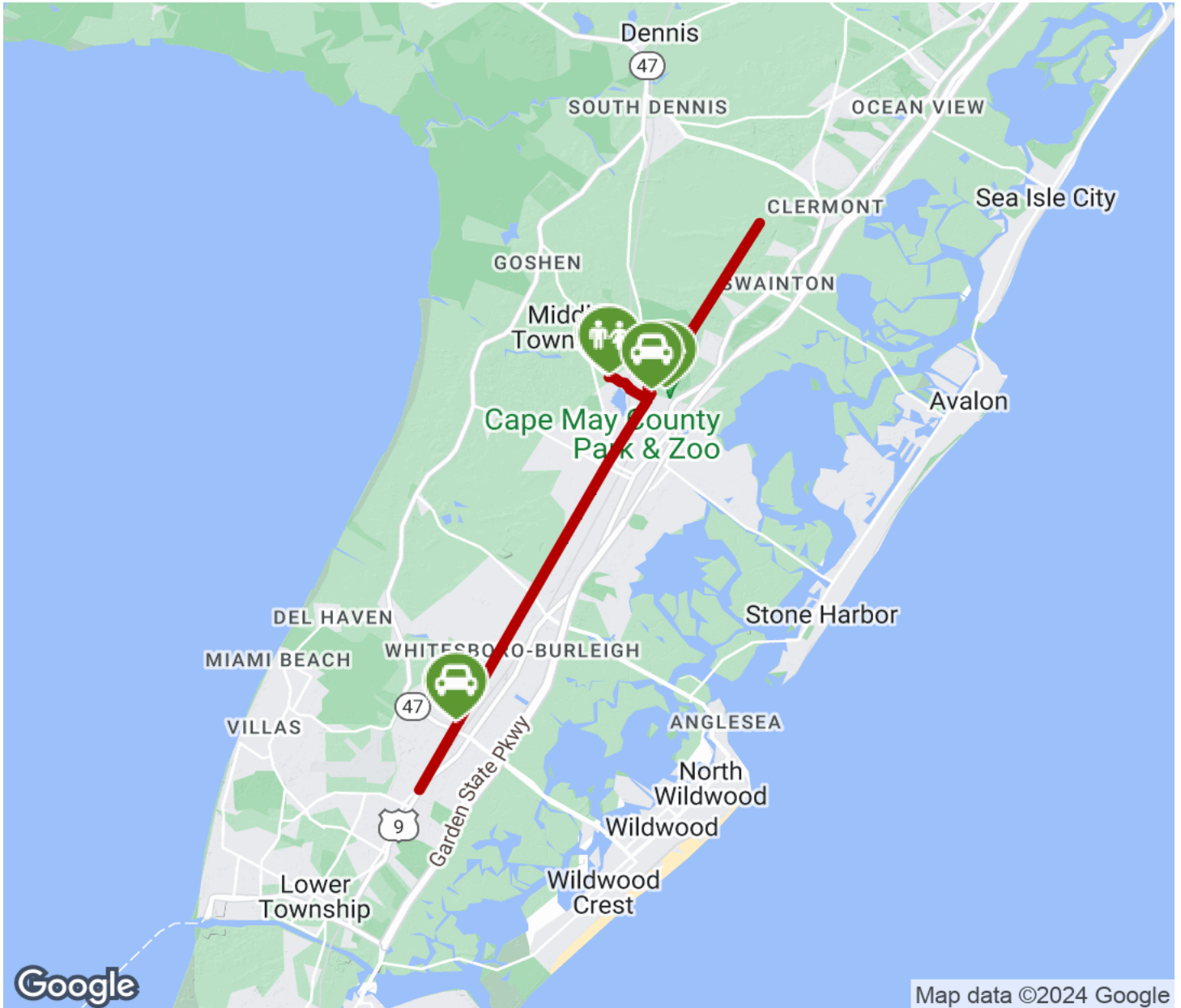
## Parking & Trail Access

Parking is available at Railroad Avenue Park (11 N Railroad Ave, Rio Grande). Steps from the path, it's a closer option for those staying in Wildwood. There is a parking lot on Country Road Park, off of Court House South Dennis Road in Cape May Court House. Additional parking is available by the Mae Hawkins Park and Goshen Davies Park off Goshen Road. Visit the [TrailLink map](#) for all options and detailed directions.



# Middle Township Bike Path

New Jersey



Trailhead



Restroom



Parking



Water Fountain



Tunnel



**TrailLink**  
by Rails-to-Trails Conservancy

**TrailLink.com**