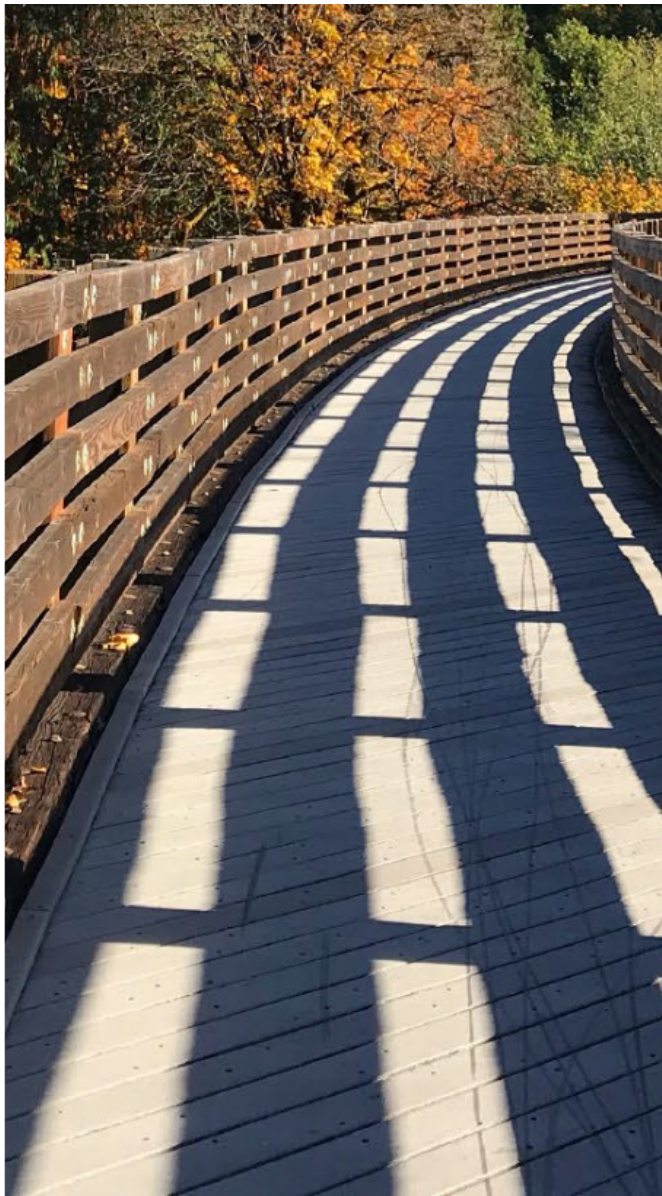




2024

TrailLink Unlimited 

Guides



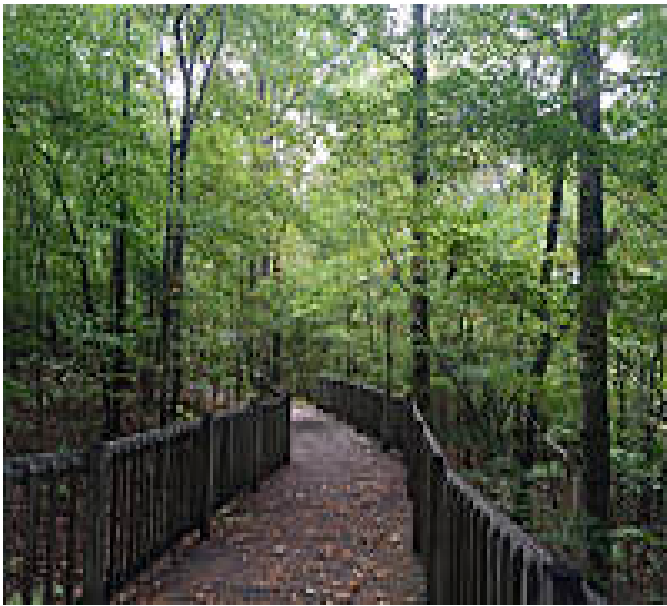
**Allegheny  
National  
Forest -  
Deerlick XC  
Ski Trail**  
*Pennsylvania*



# Allegheny National Forest - Deerlick XC Ski Trail

Pennsylvania

*This trail is not groomed. The trail is a combination of logging roads, railroad grades and pipelines that offer challenges to a wide*



This trail is not groomed. The trail is a combination of logging roads, railroad grades and pipelines that offer challenges to a wide range of skill levels. Trail is marked with blue diamonds.



# Allegheny National Forest - Deerlick XC Ski Trail

Pennsylvania

**States:** Pennsylvania

**Counties:** Warren

Length: 9miles

**Trail end points:** Allegheny National Forest to  
Allegheny National Forest

**Trail surfaces:** Ballast,Dirt,Grass,Gravel

**Trail category:** Rail-Trail

**Trail activities:** Fishing,Mountain  
Biking,Walking,Cross Country Skiing

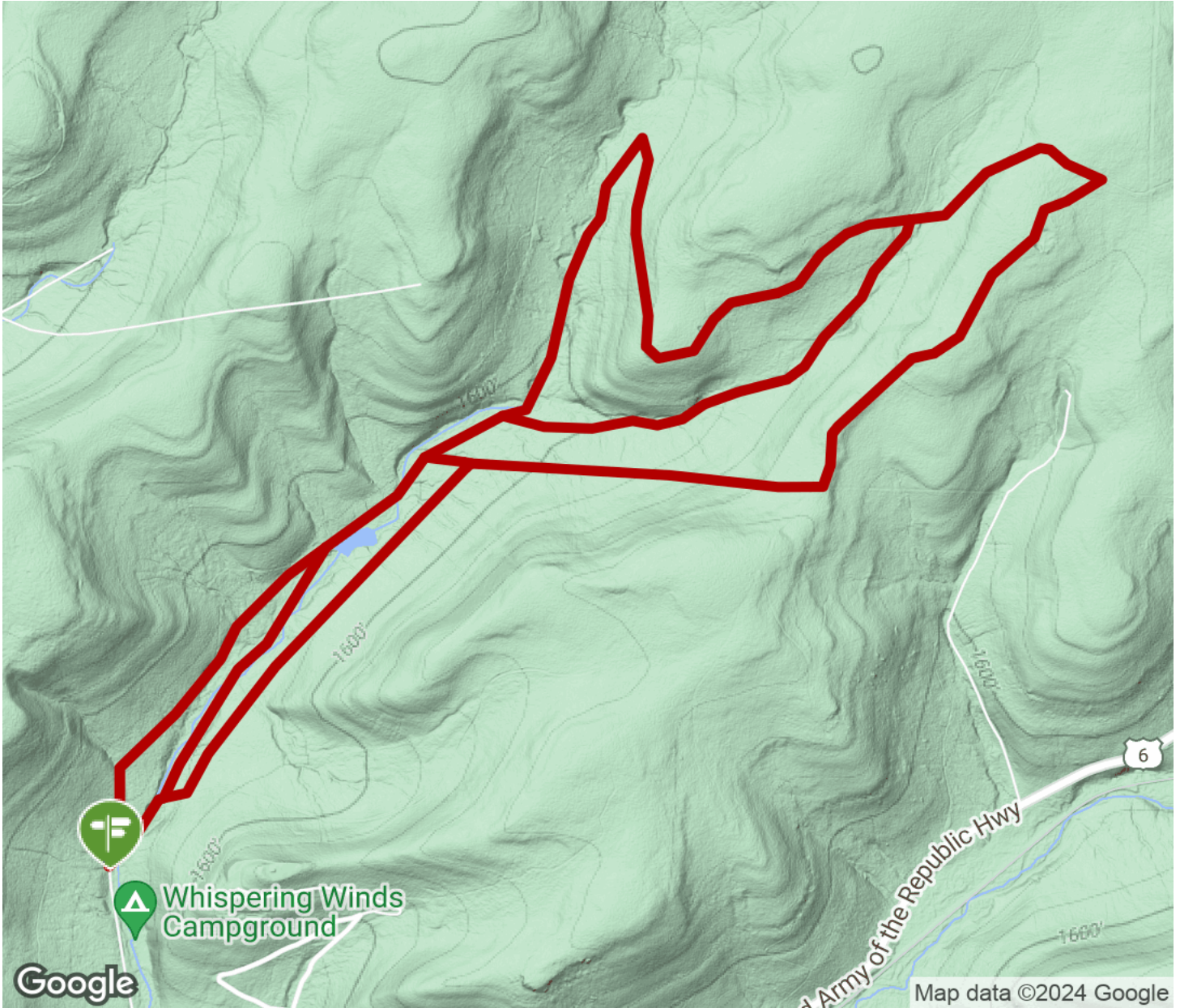
## Parking & Trail Access

The trailhead is located at the end of Tollgate Road, which is just east of Sheffield on US Route 6.



# Allegheny National Forest - Deerlick XC Ski Trail

Pennsylvania



Trailhead



Restroom



Parking



Water Fountain



Tunnel



**TrailLink**  
by Rails-to-Trails Conservancy

**TrailLink.com**