



2024

TrailLink Unlimited



Guides



Arkwright Riverwalk

Rhode Island



Arkwright Riverwalk

Rhode Island

The Arkwright Riverwalk, founded on a former rail bed purchased from Penn Central Railroad, is located in Coventry, a rural central



The Arkwright Riverwalk, founded on a former rail bed purchased from Penn Central Railroad, is located in Coventry, a rural central Rhode Island town that was built around textile mills. The one-mile trail includes a wooden boardwalk, but is primarily surfaced with dirt and follows the north branch the Pawtuxet River. Future plans include a connection to the [Phenix-Harris Riverwalk](#), just over a mile away.



Arkwright Riverwalk

Rhode Island

States: Rhode Island

Counties: Kent

Length: 0.8miles

Trail end points: Hill Street to Lincoln Avenue

Trail surfaces: Dirt, Woodchips

Trail category: Rail-Trail

Trail activities: Fishing, Horseback

Riding, Mountain

Biking, Snowmobiling, Walking, Cross Country

Skiing

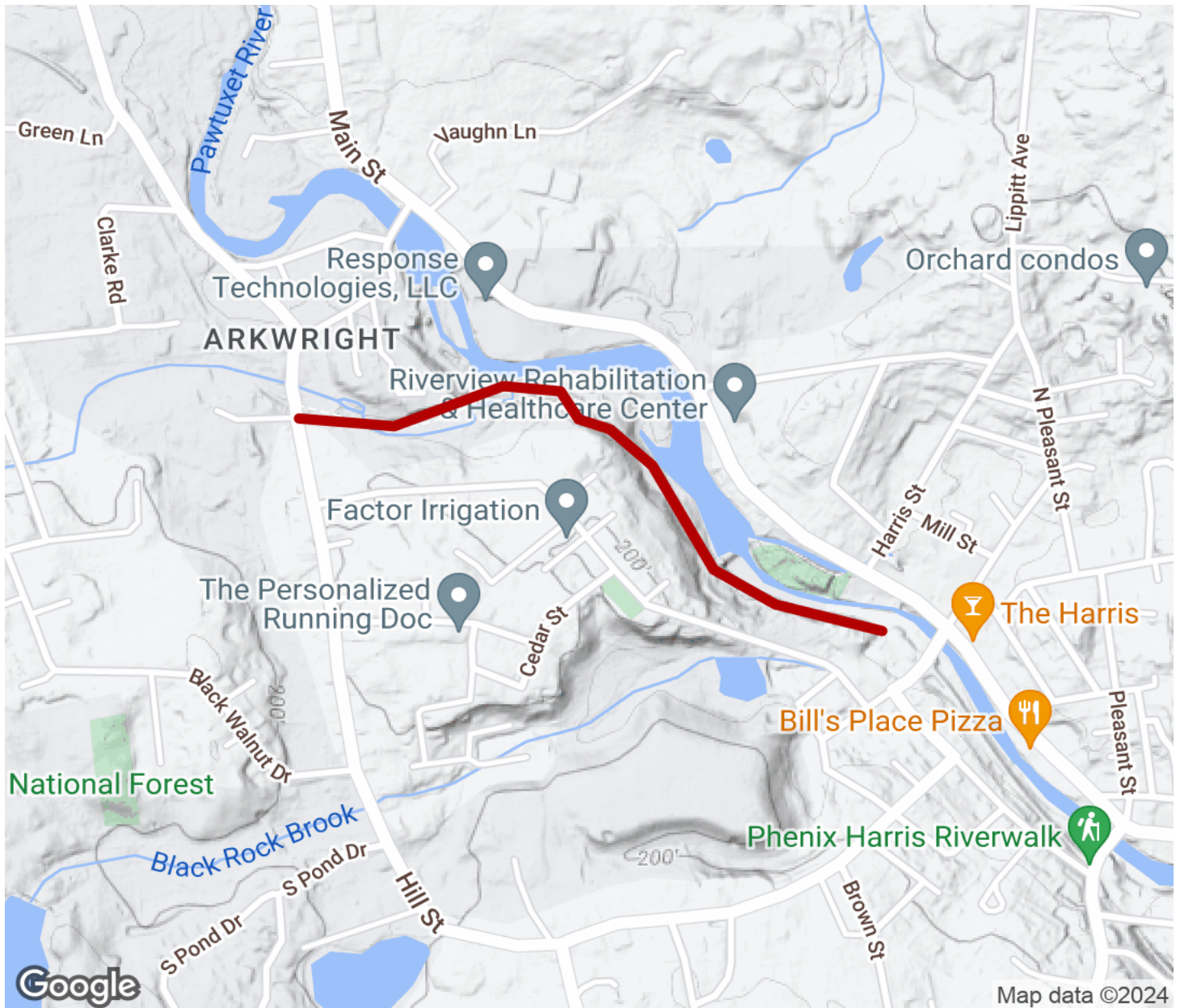
Parking & Trail Access

A small parking area is available off Hill Street.



Arkwright Riverwalk

Rhode Island



Trailhead



Restroom



Parking



Water Fountain



Tunnel



TrailLink
by Rails-to-Trails Conservancy

TrailLink.com