



2024

TrailLink Unlimited



Guides



## Railroad Grade Trail (WV)

*West Virginia*



## Railroad Grade Trail (WV)

West Virginia

*The Railroad Grade Trail is a rural hiking trail built on a former logging railroad corridor in the Monongahela National Forest*



The Railroad Grade Trail is a rural hiking trail built on a former logging railroad corridor in the Monongahela National Forest near Blackwater Falls State Park and Canaan Valley Resort State Park. The path is not to be confused with another scenic rail-trail of the same name located farther south within Canaan Valley Resort State Park.



# Railroad Grade Trail (WV)

*West Virginia*

**States:** West Virginia

**Counties:** Tucker

Length: 3.2miles

**Trail end points:** Canaan Loop Rd. in Monongahela National Forest to Canaan Loop Rd. in Monongahela National Forest

**Trail surfaces:** Dirt

**Trail category:** Rail-Trail

**Trail activities:** Walking, Cross Country Skiing

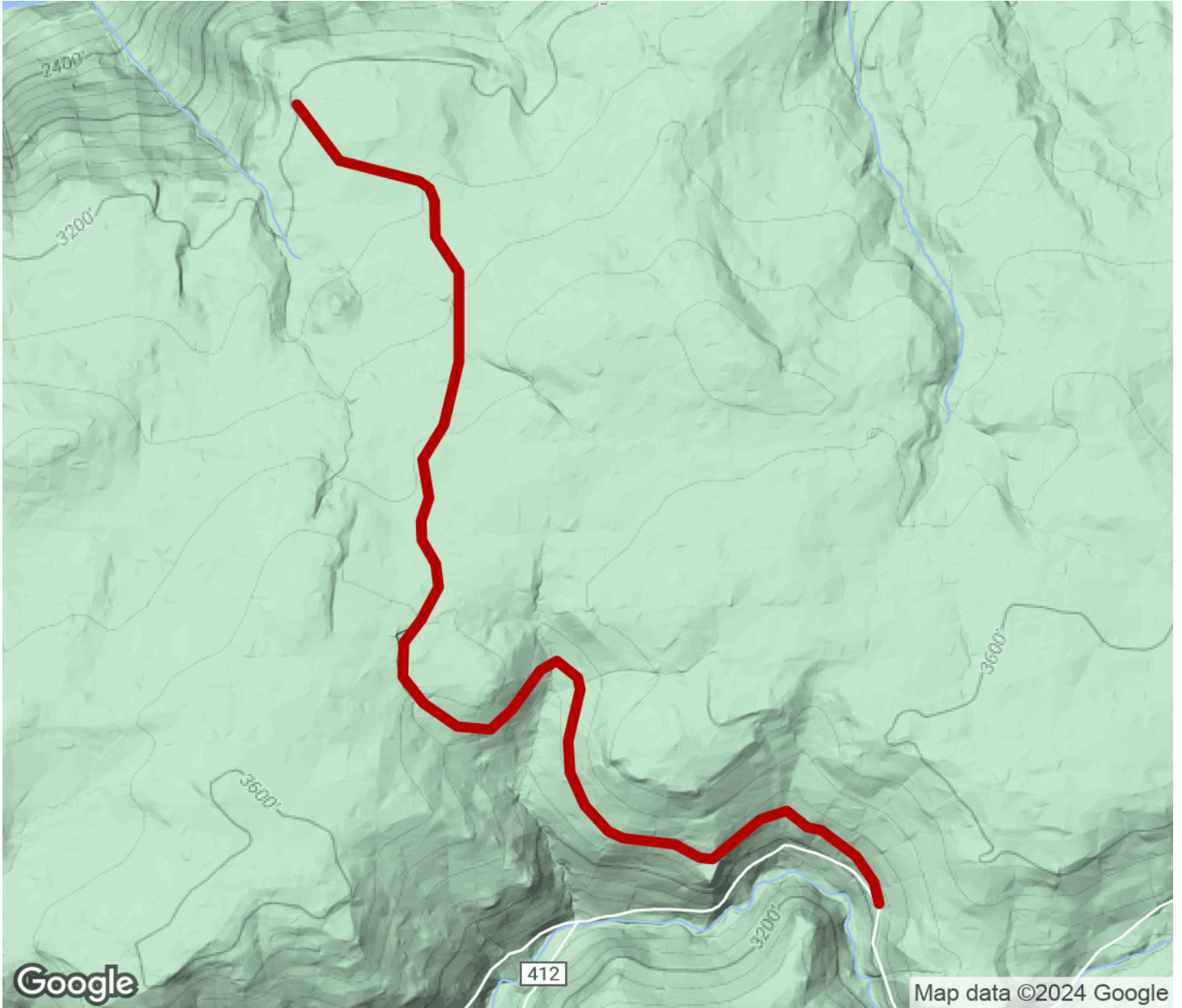
## Parking & Trail Access

The Railroad Grade Trail can be accessed on both ends from Canaan Loop Road.



# Railroad Grade Trail (WV)

West Virginia



Trailhead



Restroom



Parking



Water Fountain



Tunnel



**TrailLink**  
by Rails-to-Trails Conservancy

**TrailLink.com**