



2024

TrailLink Unlimited



Guides



**Stone Camp  
Run Trail**  
*West Virginia*



## Stone Camp Run Trail

West Virginia

*The Stone Camp Run Trail follows an old railroad corridor through a deep hollow on Middle Mountain in the Monongahela National*



The Stone Camp Run Trail follows an old railroad corridor through a deep hollow on Middle Mountain in the Monongahela National Forest's Laurel Fork North Wilderness. The scenic trail crosses the trickling water of the adjacent Stone Camp Run several times along the way.



# Stone Camp Run Trail

*West Virginia*

**States:** West Virginia

**Counties:** Randolph

Length: 1.5miles

**Trail end points:** Laurel River Trail to Laurel Fork North Wilderness (Monongahela National Forest)

**Trail surfaces:** Dirt

**Trail category:** Rail-Trail

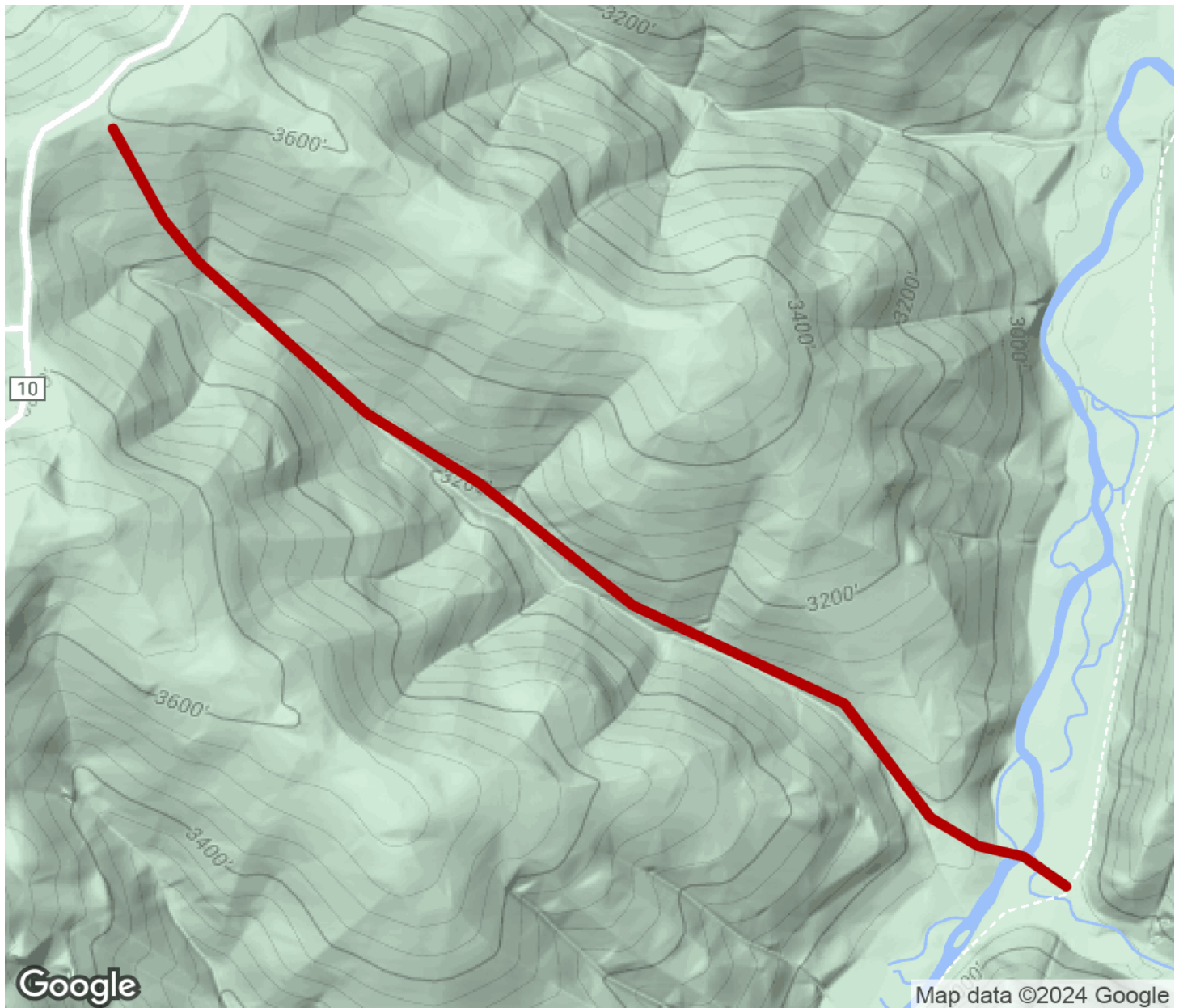
**Trail activities:** Walking

## Parking & Trail Access



# Stone Camp Run Trail

West Virginia



Trailhead



Restroom



Parking



Water Fountain



Tunnel



**TrailLink**  
by Rails-to-Trails Conservancy

**TrailLink.com**