



2024

TrailLink Unlimited 

Guides



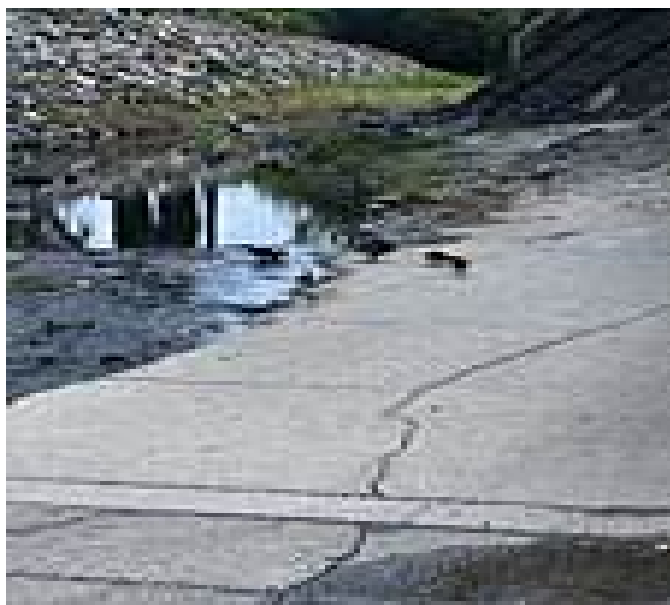
**Aliso Creek
Riding and
Hiking Trail**
California



Aliso Creek Riding and Hiking Trail

California

Overview The Aliso Creek Riding and Hiking Trail runs 16.4 miles through the foothills of Orange County, California, between Portola



Overview

The Aliso Creek Riding and Hiking Trail runs 16.4 miles through the foothills of Orange County, California, between Portola Hills and Wood Canyon in Laguna Niguel. The 16.4 mile trail makes a consistent gradual incline—providing a gentle uphill or downhill paved course through several parks and neighborhoods, along its namesake stream.

About the Route

The Aliso Creek Riding and Hiking Trail's northern endpoint is in Portola Hills, at Ridgeline Rd and El Toro Rd. Heading southwest, the trail skirts the Whiting Ranch Wilderness Park before passing under Highway 241, and follows El Toro Road until just north of the town center of Lake Forest. Splitting from the road and meandering along the creek through Lake Forest, the trail then passes through Heroes Park, El Toro Park and Sycamore Park, offering several sporting and recreation options.

After passing beneath Interstate 5, the trail briefly parts with the Aliso Creek, hugging Paseo de Valencia and Laguna Hills Drive, on paved, protected segments, before returning to the banks of the creek at Sheep Hills Park.

After passing under Moulton Parkway, the trail begins its route through Aliso and Wood Canyons Wilderness Park, remaining beside the creek as it passes several parks, schools, and recreation spots for skating, baseball, and soccer on a 2.5-mile stretch through Aliso Viejo.

At Aliso Canyon Community Park, the trail begins its final southward stretch, a 3.2 mile course through Wood Canyon. Here, the trail leaves behind its northern suburban surroundings for rugged green canyon hills with stunning views of the Pacific Ocean and resident wildlife.

The southern trail end is at a water treatment plant, one mile from the ocean. However, this endpoint is a dead-end. It does not offer access west to Laguna Beach.



Aliso Creek Riding and Hiking Trail

California

States: California

Counties: Orange

Length: 16.4miles

Trail end points: Ridgeline Rd and El Toro Rd
(Portola Hills) to Wood Canyon Wilderness
Park (Laguna Niguel)

Trail surfaces: Asphalt

Trail category: Greenway/Non-RT

Trail activities: Bike,Inline
Skating,Wheelchair Accessible,Horseback
Riding,Mountain Biking,Walking

Parking & Trail Access

The Aliso Creek Riding and Hiking Trail runs between Ridgeline Rd and El Toro Rd (Portola Hills) and Aliso and Wood Canyon Wilderness Park (Laguna Niguel).

Parking is also available:

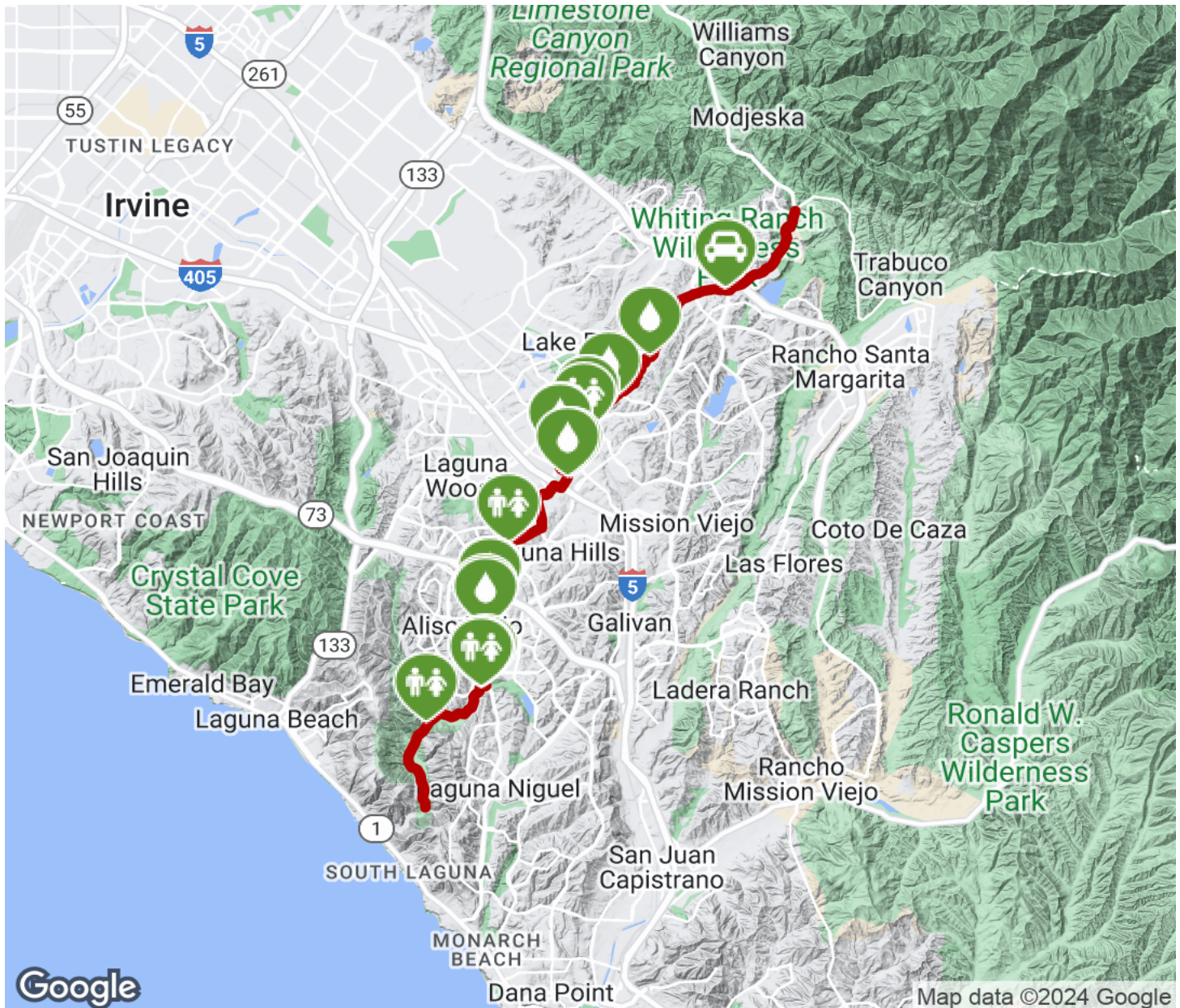
- 20811 El Toro Rd (Lake Forest)
- Woodfield (Aliso Viejo)
- 2829 Awma Rd (Laguna Niguel)

See [TrailLink Map](#) for all parking options and detailed directions.



Aliso Creek Riding and Hiking Trail

California



Trailhead



Restroom



Parking



Water Fountain



Tunnel



TrailLink
by Rails-to-Trails Conservancy

TrailLink.com