



2024

TrailLink Unlimited



Guides



**D & H Canal  
Park**

*New York*



## D & H Canal Park

New York

*The D & H Canal towpath is nestled within the 300-acre D & H Canal Park in the New York hamlet of Cuddebackville. The crushed-stone*



The D & H Canal towpath is nestled within the 300-acre D & H Canal Park in the New York hamlet of Cuddebackville. The crushed-stone trail, stretching just over a half mile, is one section of a larger trail system winding along the historical Delaware and Hudson (D & H) Canal, which dates back to the early 1800s.

Walking and biking can be enjoyed in this beautiful natural setting, as well as fishing in the Neversink River. The D & H Canal Park Visitor Center is a good place to start your journey to learn more about the canal; you can also picnic on its grounds. The Neversink Valley Area Museum (located adjacent to the park entrance) is another must-visit attraction for history buffs.



# D & H Canal Park

*New York*

**States:** New York

**Counties:** Orange

Length: 0.6 miles

**Trail end points:** Hoag Road to Route 7 near  
Berman Road

**Trail surfaces:** Crushed Stone

**Trail category:** Canal

**Trail activities:** Bike, Fishing, Wheelchair  
Accessible, Walking, Cross Country Skiing

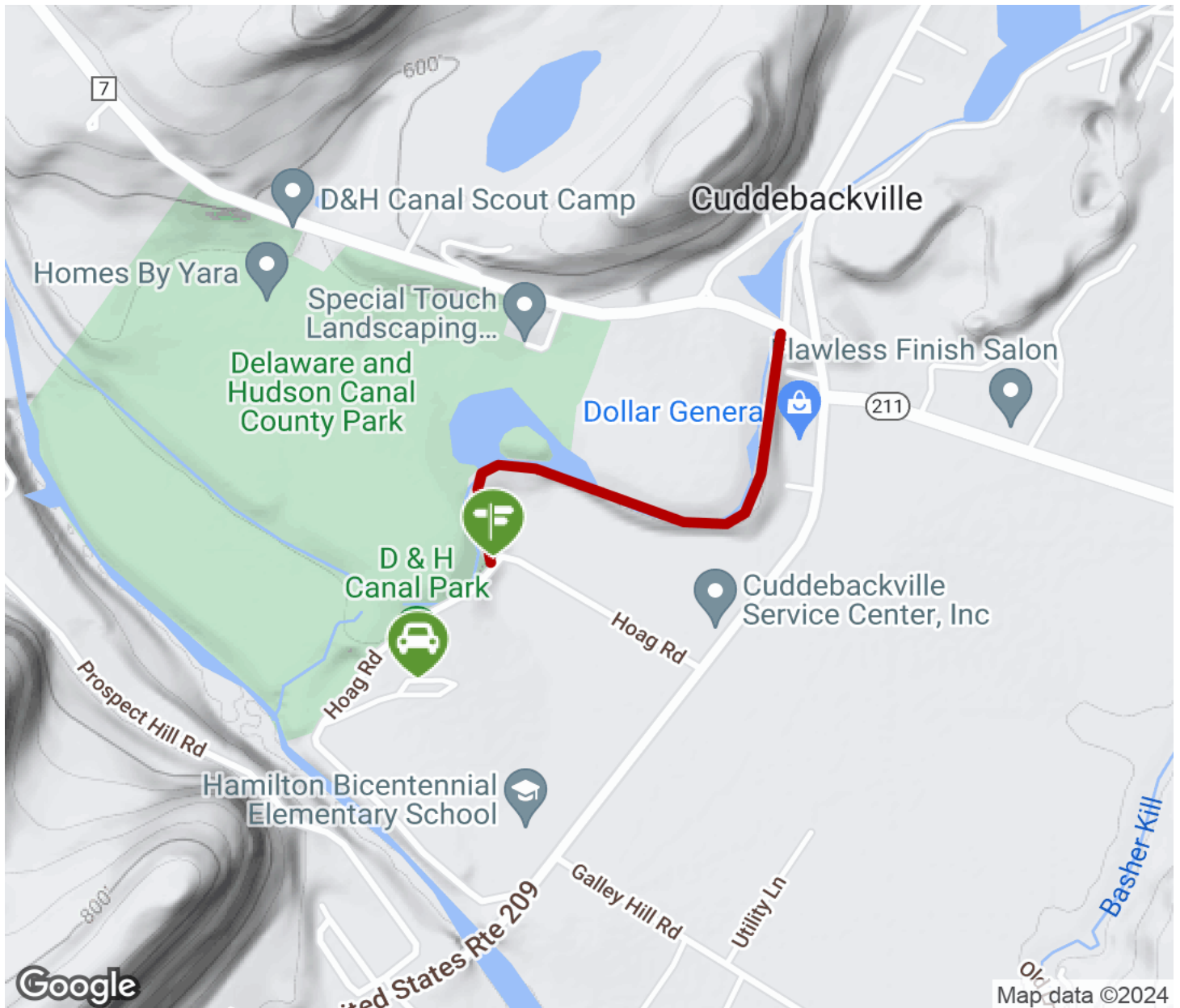
## Parking & Trail Access

The trail is located within D & H Canal Park (58 Hoag Road, Cuddebackville), where parking and restrooms are available at the visitor center.



# D & H Canal Park

New York



Trailhead



Restroom



Parking



Water Fountain



Tunnel



**TrailLink**  
by Rails-to-Trails Conservancy

**TrailLink.com**