



2024

TrailLink Unlimited



Guides



**T. J. Evans
Trail**
Ohio



T. J. Evans Trail

Ohio

Closure Notice: During the spring/summer of 2024, the trail will be periodically closed between Reddington Road and Granville (under



Closure Notice: During the spring/summer of 2024, the trail will be periodically closed between Reddington Road and Granville (under OH-16). Visit the [Licking Park District's trail status page](#) for the most recent updates and contact information.

Located in central Ohio, the 14-mile T. J. Evans Trail is a popular route, attracting both locals and visitors. With its tree-covered canopy that provides respite from the sun on hot summer days, interludes in charming small towns, and a paved surface, the path offers an ideal day trip with multiple opportunities for side exploration. The corridor was once used by Penn Central Railroad, and railroad enthusiasts will enjoy learning more about this rail line at historical markers along the route.

Begin at the southern trailhead at West Main Street in Newark and head west on the T. J. Evans Trail. As you continue along, you'll head into a beautifully shaded ravine area and hear the rapids of Raccoon Creek on the trail's east side. After passing under OH-16, fields dotted with cows extend from both sides of the path.

At about 4 miles, you will come to Granville. If you're interested in a side trip, visit Alligator Mound, located less than a mile off the trail, by turning right onto Fairview Drive and heading north. Overlooking Raccoon Creek, this is one of two local animal effigy mounds built by prehistoric people; it is listed on the National Register of Historic Places. Continuing along the trail, follow the signage for a short climb to the beautiful New England-style downtown, where you can find many restaurants, shops, and lodging options, as well as Denison University.

If you remain on the trail, a pedestrian crossing guides you over OH-661 at the former Granville railroad station, which now houses a real estate agent's office. Stop for a break at Wildwood Park, which features open fields and an incredible, wooden castle-shaped play area. Later, arrive at the ruins of Clemons Station. Several bridges span small creeks between here and Alexandria, about 2 miles northwest.

When you cross Raccoon Valley Road, you are in the village of Alexandria. The remaining 6.3 miles of trail to Johnstown pass alternately through woods, ravines, and farm fields. The setting is remote and relaxing, but the many rural road crossings require caution.

The Jersey Street trailhead in Johnstown signals the route's end. The beautiful T. J. Evans rail-trail only gets better on the return trip, as a slight grade gives you a downhill advantage.

Once back in Newark, you can pick up the [T. J. Evans Panhandle Trail](#) on the east side of town. Near the Cherry Valley Road parking lot where you started your adventure,



T. J. Evans Trail

Ohio

States: Ohio

Counties: Licking

Length: 14.3miles

Trail end points: Johnstown Trailhead (157 E Jersey St, Johnstown) to W Main St, west of Coffman Rd (Newark)

Trail surfaces: Asphalt

Trail category: Rail-Trail

Trail activities: Bike,Inline

Skating,Fishing,Wheelchair

Accessible,Walking,Cross Country Skiing

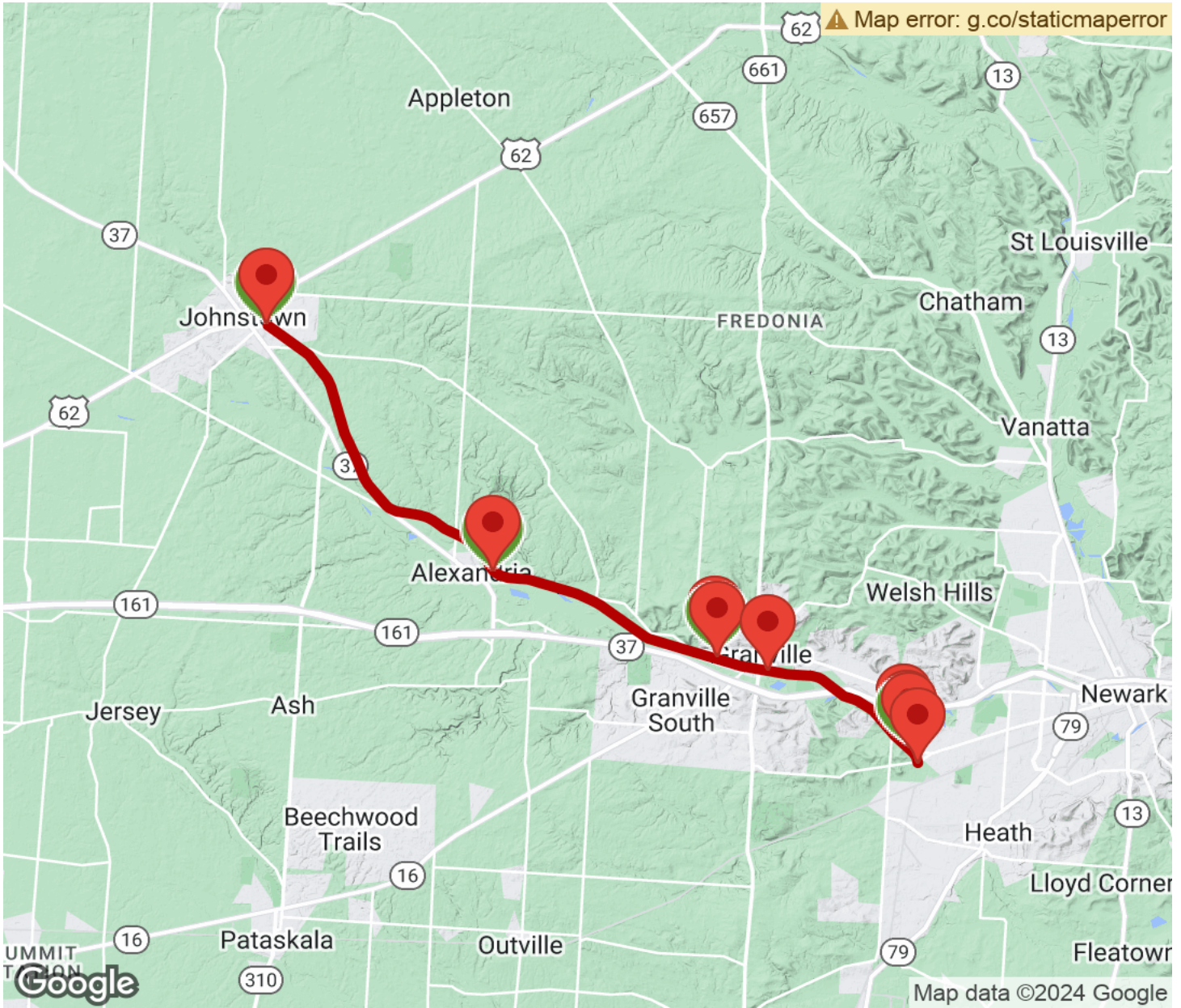
Parking & Trail Access

Parking is available at both ends of the trail and at several locations along the route. Visit the [TrailLink map](#) for all options and detailed directions.



T. J. Evans Trail

Ohio



Trailhead



Restroom



Parking



Water Fountain



Tunnel



TrailLink
by Rails-to-Trails Conservancy

TrailLink.com