



2024

TrailLink Unlimited



Guides



**Pacific Gas  
and Electric  
Greenbelt**  
*California*



## Pacific Gas and Electric Greenbelt

California

*The Pacific Gas and Electric Greenbelt bisects Stockton's Weston Ranch neighborhood diagonally from French Camp Road to the*



The Pacific Gas and Electric Greenbelt bisects Stockton's Weston Ranch neighborhood diagonally from French Camp Road to the San Joaquin River via an overhead electric utility corridor. The main trail ends on the opposite side of the French Camp Slough from Van Buskirk Municipal Park. A long spur passes through Paul E. Weston Park and ends at Manthey Road.

Due to its location in a utility corridor, the route is exposed with no shade, so be sure to bring water and wear sunscreen. At the trail's northern endpoint, pick up the [French Camp Slough Trail](#)—also known as the San Joaquin River Trail—to follow the two waterways through Weston Ranch.



# Pacific Gas and Electric Greenbelt

California

**States:** California

**Counties:** San Joaquin

Length: 2.6miles

**Trail end points:** French Camp Rd. to Manthey Rd.; French Camp Slough Trail north of Decarli St.

**Trail surfaces:** Asphalt

**Trail category:** Greenway/Non-RT

**Trail activities:** Bike,Inline Skating, Wheelchair Accessible, Walking

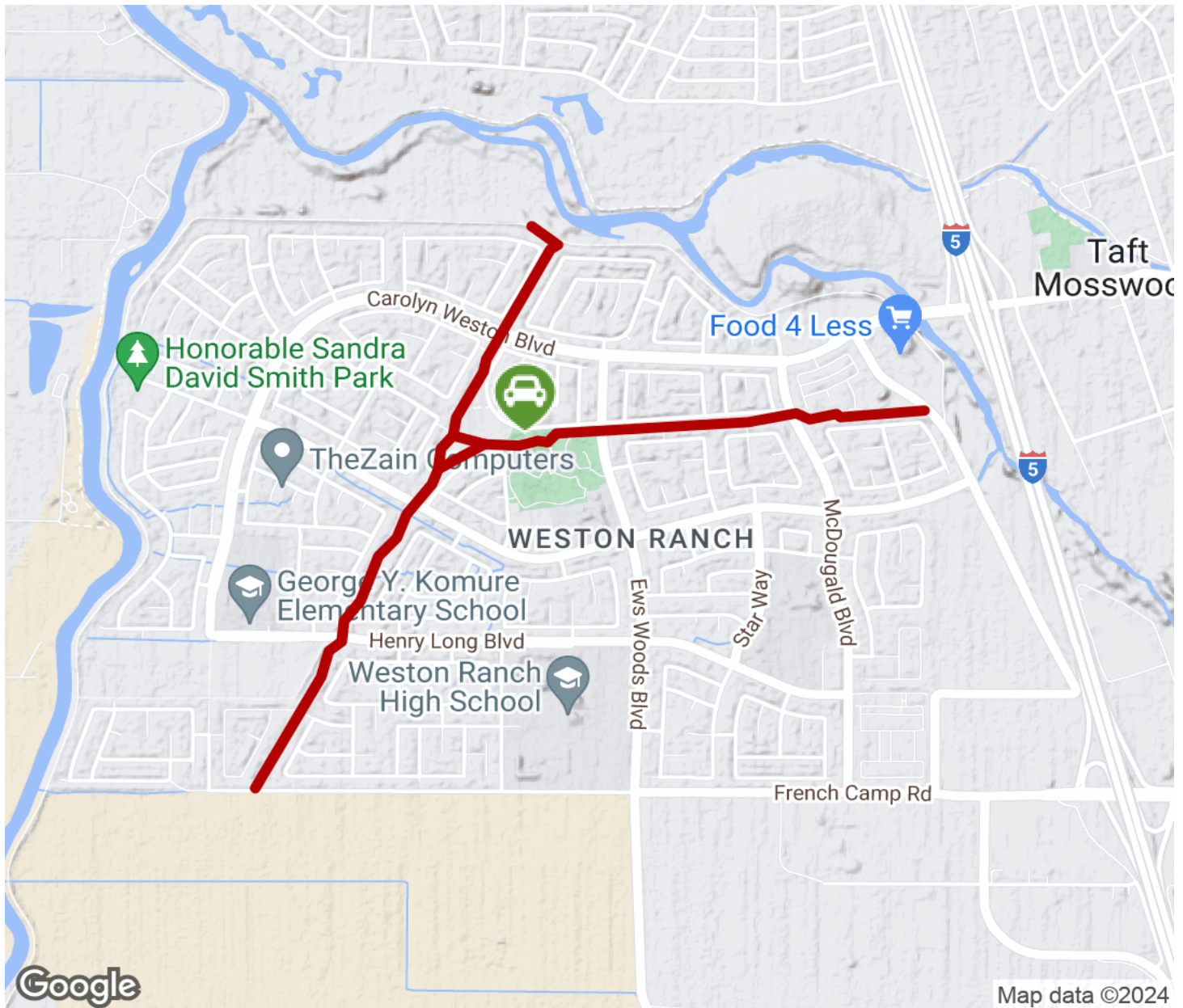
## Parking & Trail Access

Parking for the Pacific Gas and Electric Greenbelt is available at Paul E. Weston Park on Ishi Goto Street.



# Pacific Gas and Electric Greenbelt

California



Trailhead



Restroom



Parking



Water Fountain



Tunnel



**TrailLink**  
by Rails-to-Trails Conservancy

**TrailLink.com**