



2024

TrailLink Unlimited 

Guides



South Lake Tahoe Bike Path

California



South Lake Tahoe Bike Path

California

The South Lake Tahoe Bike Path consists of several disconnected trail segments along Lake Tahoe Boulevard (US 50) in the beautiful



The South Lake Tahoe Bike Path consists of several disconnected trail segments along Lake Tahoe Boulevard (US 50) in the beautiful lakeside resort town of South Lake Tahoe. The longest continuous stretch of trail runs through the Al Tahoe community and features a bridge crossing of Trout Creek, while arguably the most scenic segment provides stunning views of Lake Tahoe and direct access to El Dorado Beach.

Most of the gaps in the trail can be bridged easily via calm neighborhood streets. At Ski Run Boulevard, pick up the [Ski Run Bike Trail](#) to reach apartments and homes farther south.



South Lake Tahoe Bike Path

California

States: California

Counties: El Dorado

Length: 2.9miles

Trail end points: Factory Stores at the Y on US 50/Lake Tahoe Blvd. to Pioneer Trail and US 50/Lake Tahoe Blvd.

Trail surfaces: Asphalt

Trail category: Greenway/Non-RT

Trail activities: Bike,Inline Skating,Wheelchair Accessible,Walking

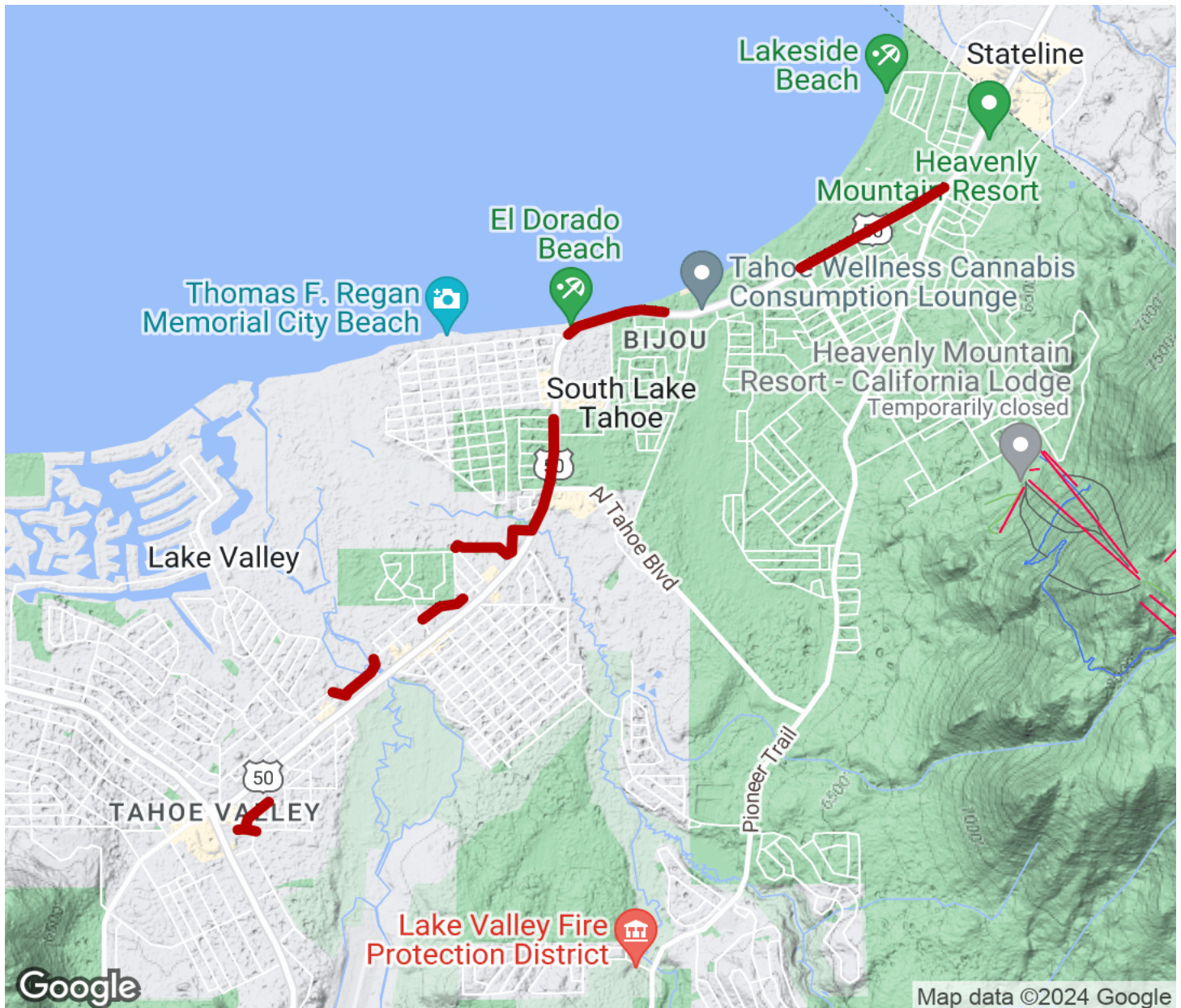
Parking & Trail Access

There are no official parking lots for the South Lake Tahoe Bike Path, but you can access the trail from numerous locations throughout the south shore community.



South Lake Tahoe Bike Path

California



Trailhead



Restroom



Parking



Water Fountain



Tunnel



TrailLink
by Rails-to-Trails Conservancy

TrailLink.com