



2024

TrailLink Unlimited



Guides



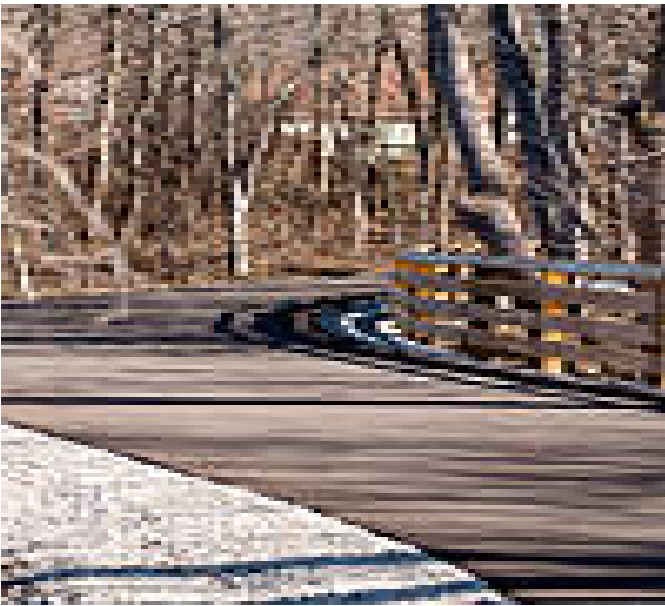
**Midland
Trace Trail**
Indiana



Midland Trace Trail

Indiana

The Midland Trace Trail follows the abandoned Central Indiana Railway corridor (a.k.a. the "Midland"). When complete, it will run



Drive to Austrian Pine Way and from Quaker Park (17501 Dartown Rd) to a seamless connection with the nearly 20-mile [Monon Trail](#) just west of Westfield Park Road. In Noblesville, the trail connects to the Little Chicago Trail, which heads north.

The paved, 12-foot-wide trail has signage along the route and crosswalks (some with signal lights) at street crossings. Restrooms, water, and other amenities are located along the trail and at the trailheads. View the [TrailLink map](#) for locations of restrooms and water stations.

The Midland Trace Trail follows the abandoned Central Indiana Railway corridor (a.k.a. the "Midland"). When complete, it will run from Westfield to the White River in Noblesville, paralleling State Route 32, located roughly 0.25 mile to the corridor's north. The trail will pass through scenic woodlands and open fields, cross two historic railroad trestles and link neighborhoods, schools and parks in Noblesville and Westfield.

The longest section of the Midland Trace Trail currently runs from 302 S Union Street in Westfield to the intersection of Westfield Road/SR32 and Hague Road in Noblesville. Plans include continuing the trail east to SR37.

In Westfield, two additional sections run from Retford



Midland Trace Trail

Indiana

States: Indiana

Counties: Hamilton

Length: 7.5miles

Trail end points: Retford Dr & Tilbury Way to Austrian Pine Way; Quaker Park (17501 Dartown Rd) to Monon Trail; to S Union St (Westfield) to Westfield Rd/SR32 & Hague Rd (Noblesville)

Trail surfaces: Asphalt

Trail category: Rail-Trail

Trail activities: Bike, Inline

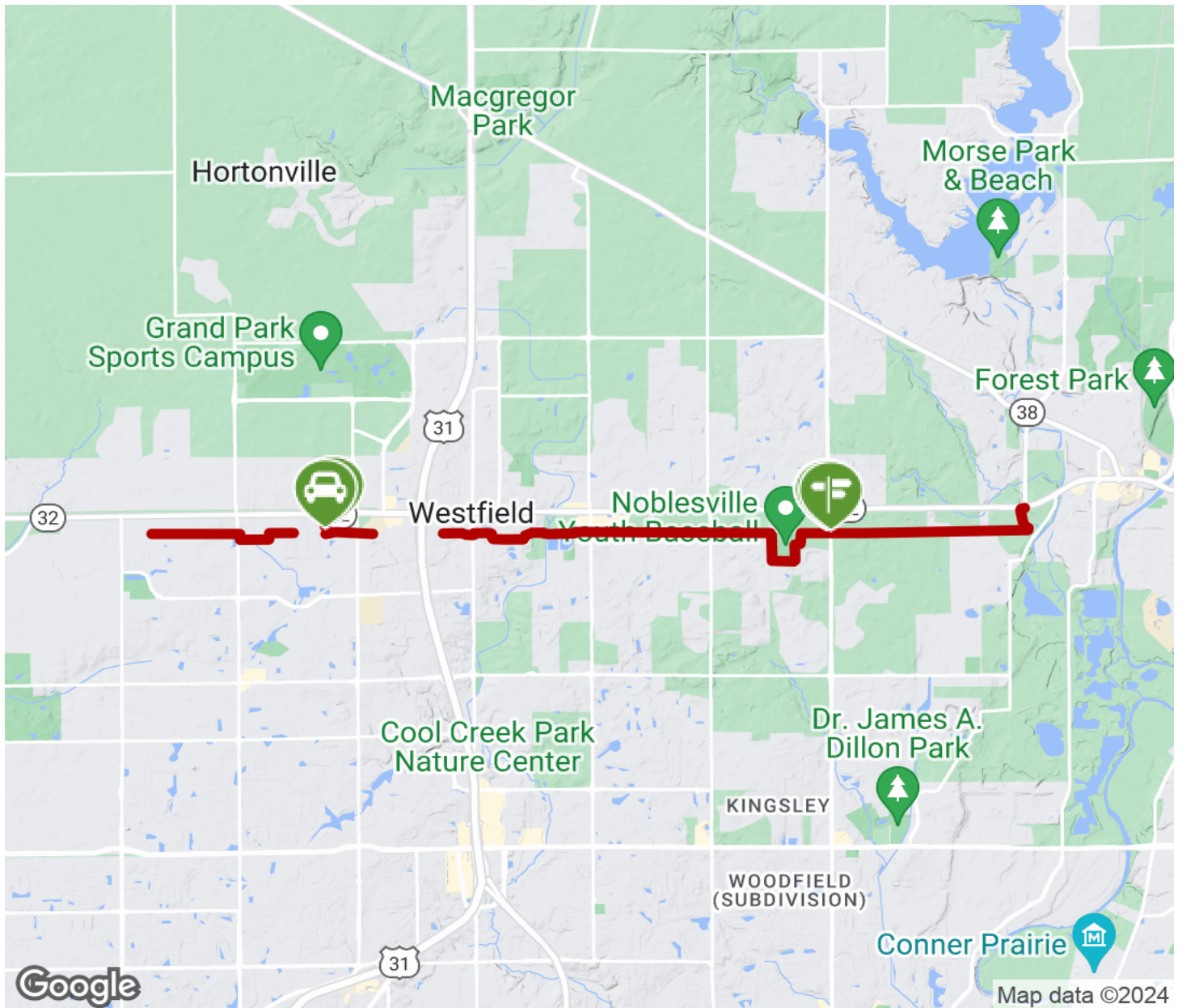
Parking & Trail Access

Parking is available at Quaker Park on Dartown Road and Simon Moon Park on South Street/East 171st Street. Additional parking in Noblesville is located on the west side of Hazel Dell Road, just south of SR32. Parking is available at a number of locations along the trail. View the [TrailLink map](#) for all options and detailed directions.



Midland Trace Trail

Indiana



Trailhead



Restroom



Parking



Water Fountain



Tunnel



TrailLink
by Rails-to-Trails Conservancy

TrailLink.com