



2024

TrailLink Unlimited 

Guides



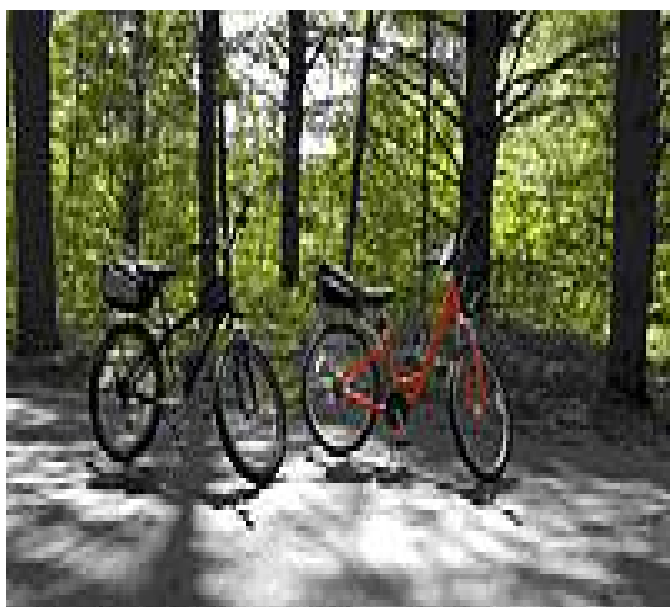
**Chippewa
Trail**
Michigan



Chippewa Trail

Michigan

The Chippewa Trail offers a paved 4-mile route from Midland to the Chippewa Nature Center, part of a beautiful 1,200-acre



[Rail-Trail](#) on the north shore of the Tittabawassee River. The rail-trail is listed in RTC's Hall of Fame and extends 87 miles west from Midland.

The Chippewa Trail offers a paved 4-mile route from Midland to the Chippewa Nature Center, part of a beautiful 1,200-acre preserve, where you'll find a wildlife viewing area, river overlook and nature-themed programming for kids.

From the unique Tridge bridge at the confluence of the Tittabawassee and Chippewa Rivers, you'll head southwest through both open and wooded areas. In St. Charles Park, you'll find many recreational amenities, such as playgrounds, a skate park, swimming pool, roller rink, baseball field and picnic areas. As you continue, interpretive signs bring attention to historical, cultural and natural points of interest.

For a longer ride, you can pick up the [Pere Marquette](#)



TrailLink
by Rails-to-Trails Conservancy

TrailLink.com



Chippewa Trail

Michigan

States: Michigan

Counties: Midland

Length: 4.1miles

Trail end points: Pere Marquette Rail-Trail at the Tridge to Chippewa Nature Center on S. Badour Rd.

Trail surfaces: Asphalt

Trail category: Greenway/Non-RT

Trail activities: Bike,Inline

Skating,Wheelchair Accessible,Walking,Cross Country Skiing

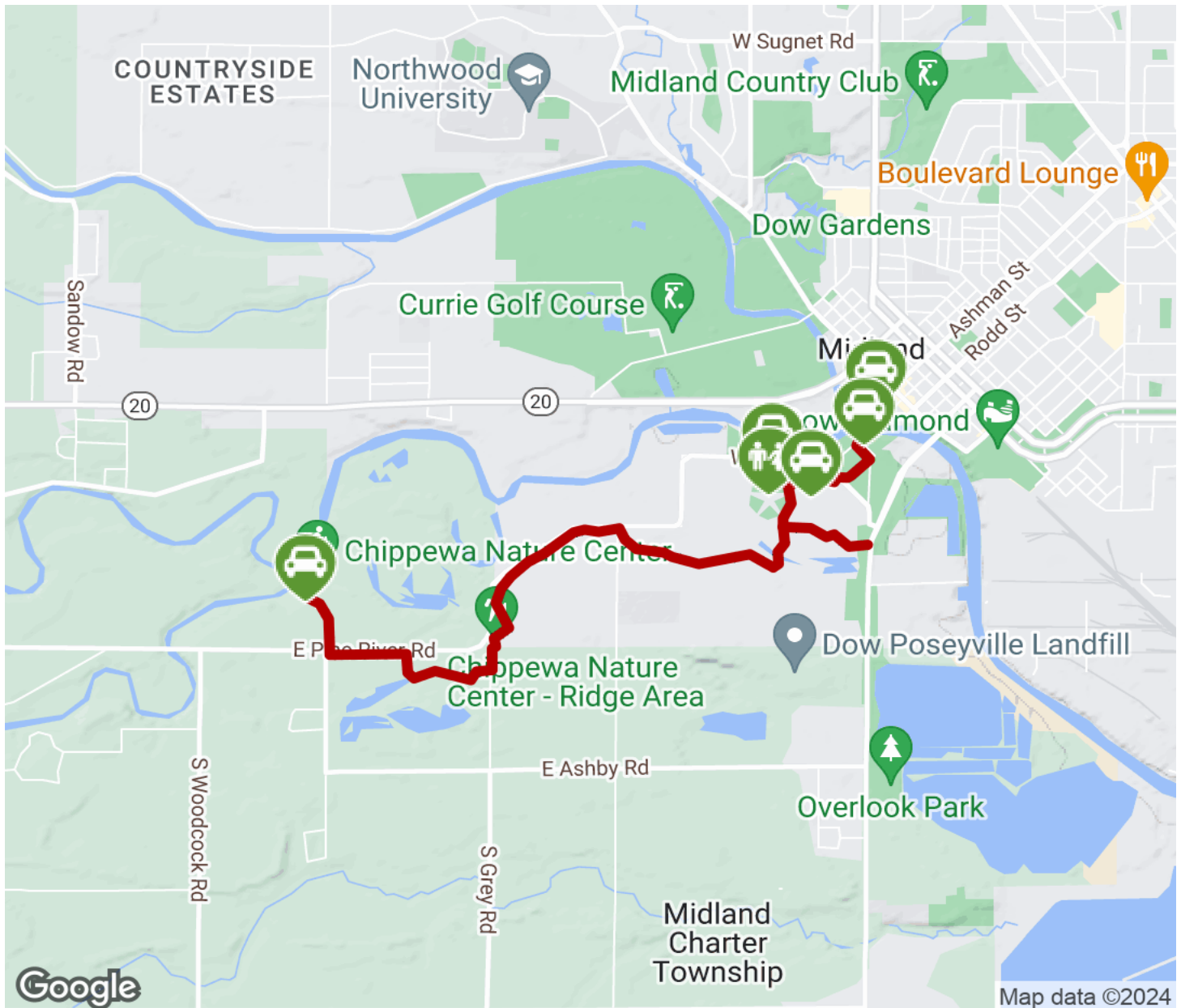
Parking & Trail Access

On the Chippewa Trail's eastern end, park in St. Charles Park (605 Whitman Drive); on its western end, park at Chippewa Nature Center (400 S. Badour Road).



Chippewa Trail

Michigan



Trailhead



Restroom



Parking



Water Fountain



Tunnel



TrailLink
by Rails-to-Trails Conservancy

TrailLink.com