



2024

TrailLink Unlimited



Guides



**Big Sky Park  
Trail**  
*Oregon*



## Big Sky Park Trail

Oregon

*On the east end of Bend, a short trail winds along Big Sky Park and Sports Complex. The natural-surface trail runs through an open*



On the east end of Bend, a short trail winds along Big Sky Park and Sports Complex. The natural-surface trail runs through an open area and has plentiful nearby amenities, including parking, portable toilets, drinking fountains, picnic shelters, athletic facilities, a playground, and a large off-leash dog park.



# Big Sky Park Trail

Oregon

**States:** Oregon

**Counties:** Deschutes

Length: 0.9miles

**Trail end points:** Neff Rd. to South of Eastmont  
Dr.

**Trail surfaces:** Dirt,Gravel

**Trail category:** Greenway/Non-RT

**Trail activities:** Mountain Biking,Walking

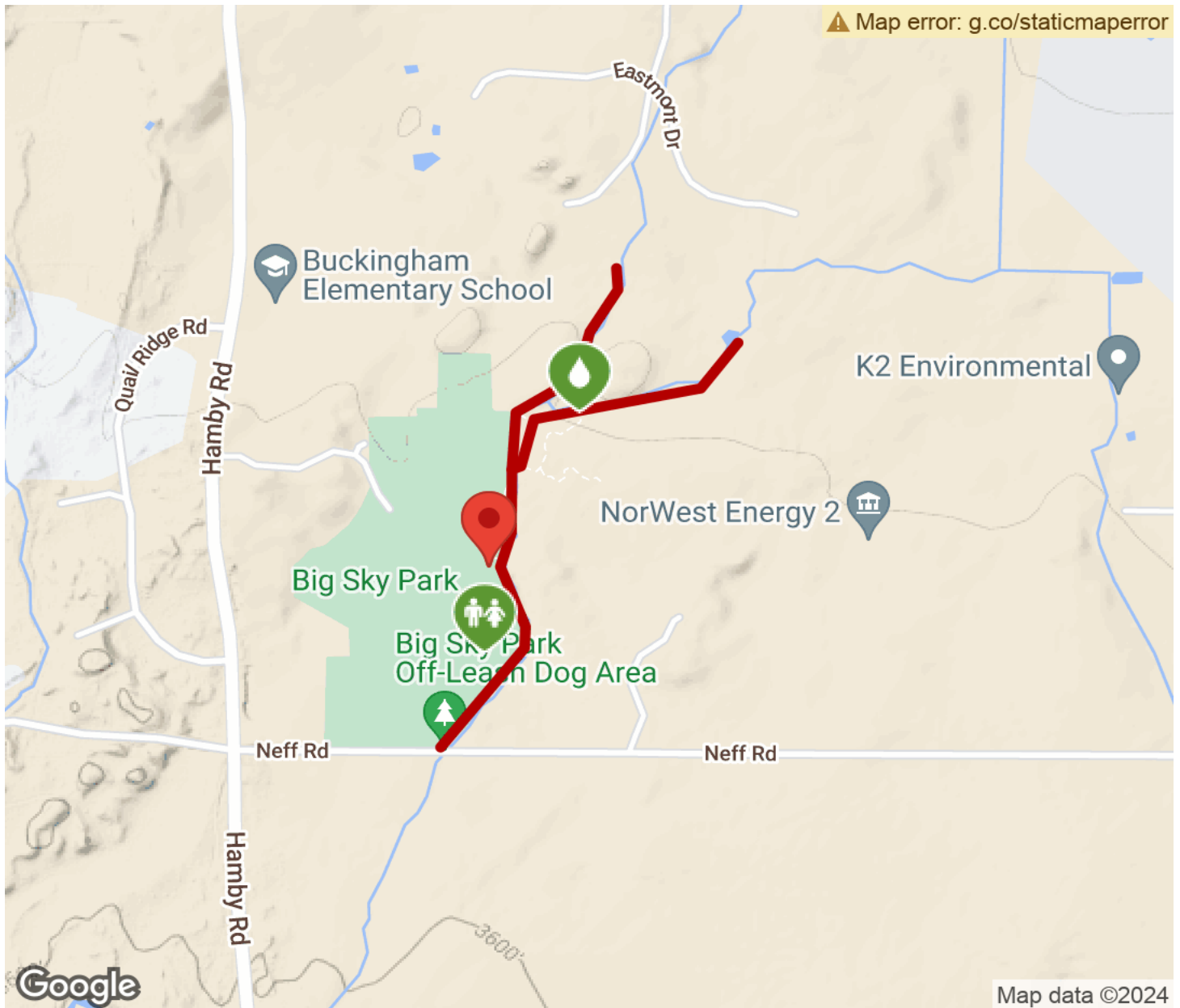
## Parking & Trail Access

Parking is plentiful in Big Sky Park (21690 NE Neff Road).



# Big Sky Park Trail

Oregon



Trailhead



Restroom



Parking



Water Fountain



Tunnel



**TrailLink**  
by Rails-to-Trails Conservancy

**TrailLink.com**