



2024

TrailLink Unlimited



Guides



**Shawmut
Trail**
Pennsylvania



Shawmut Trail

Pennsylvania

The Shawmut Trail begins in the southwest corner of the small, charming community of Smethport and continues southwest out of



The Shawmut Trail begins in the southwest corner of the small, charming community of Smethport and continues southwest out of town along Marvin Creek. Along the way, views are a mix of woodlands, meadows, and farm fields.

A good place to begin your journey is Hamlin Lake Park, which offers many recreational opportunities, including fishing, boating, picnicking, and athletic facilities. From there, the crushed limestone trail continues southwest to McKean County Poor Farm, a complex of historical buildings dating back to 1883 that have been refurbished into county offices.



Shawmut Trail

Pennsylvania

States: Pennsylvania

Counties: McKean

Length: 0.6 miles

Trail end points: Marvin Creek Bridge near
U.S. Route 6 to McKean County Poor Farm

Trail surfaces: Crushed Stone

Trail category: Rail-Trail

Trail activities: Bike, Fishing, Wheelchair
Accessible, Horseback Riding, Walking, Cross
Country Skiing

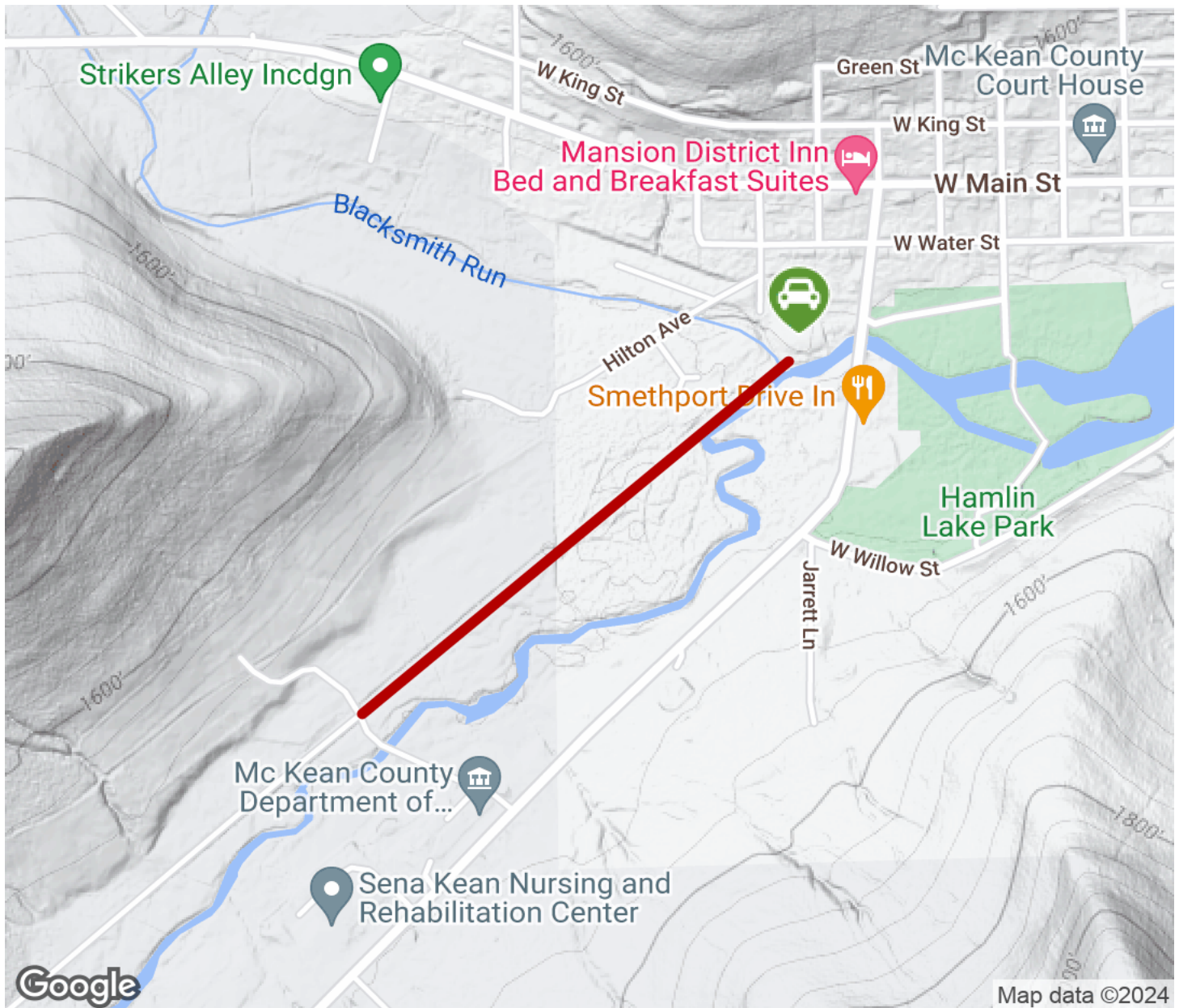
Parking & Trail Access

Parking is available near the north end of the trail in Hamlin Lake Park, accessible via Park Lane. There is also a trailhead with parking and a kiosk off U.S. Route 6 near the Marvin Creek Bridge.



Shawmut Trail

Pennsylvania



Trailhead



Restroom



Parking



Water Fountain



Tunnel



TrailLink

by Rails-to-Trails Conservancy

[TrailLink.com](https://www.TrailLink.com)