



2024

TrailLink Unlimited



Guides



**Weston Bluffs  
Trail**  
*Missouri*



## Weston Bluffs Trail

Missouri

*Running from the small town of Weston to the nearby Weston Bend State Park, the Weston Bluffs Trail provides a safe and scenic*



campgrounds are available within Weston Bend State Park.

Running from the small town of Weston to the nearby Weston Bend State Park, the Weston Bluffs Trail provides a safe and scenic means for park visitors to visit the quaint town, and for town residents to get in some quality recreation.

The trail begins right next to Weston City Hall, starting with a paved asphalt surface before switching to crushed limestone around the midway point. The route parallels the Burlington Northern Railway for its entirety and is for the most part flat, and the southern half of the trail offers the occasional view of the Missouri River to the west.

Trail users may get the chance to see migrating waterfowl and a variety of other wildlife as they make their way through the peaceful wooded terrain. Picnic sites and



# Weston Bluffs Trail

Missouri

**States:** Missouri

**Counties:** Platte

Length: 3.25miles

**Trail end points:** Welt Street (near Weston City Hall) to S Bluff Road

**Trail surfaces:** Asphalt, Crushed Stone

**Trail category:** Rail-Trail

**Trail activities:** Bike, Walking

## Parking & Trail Access

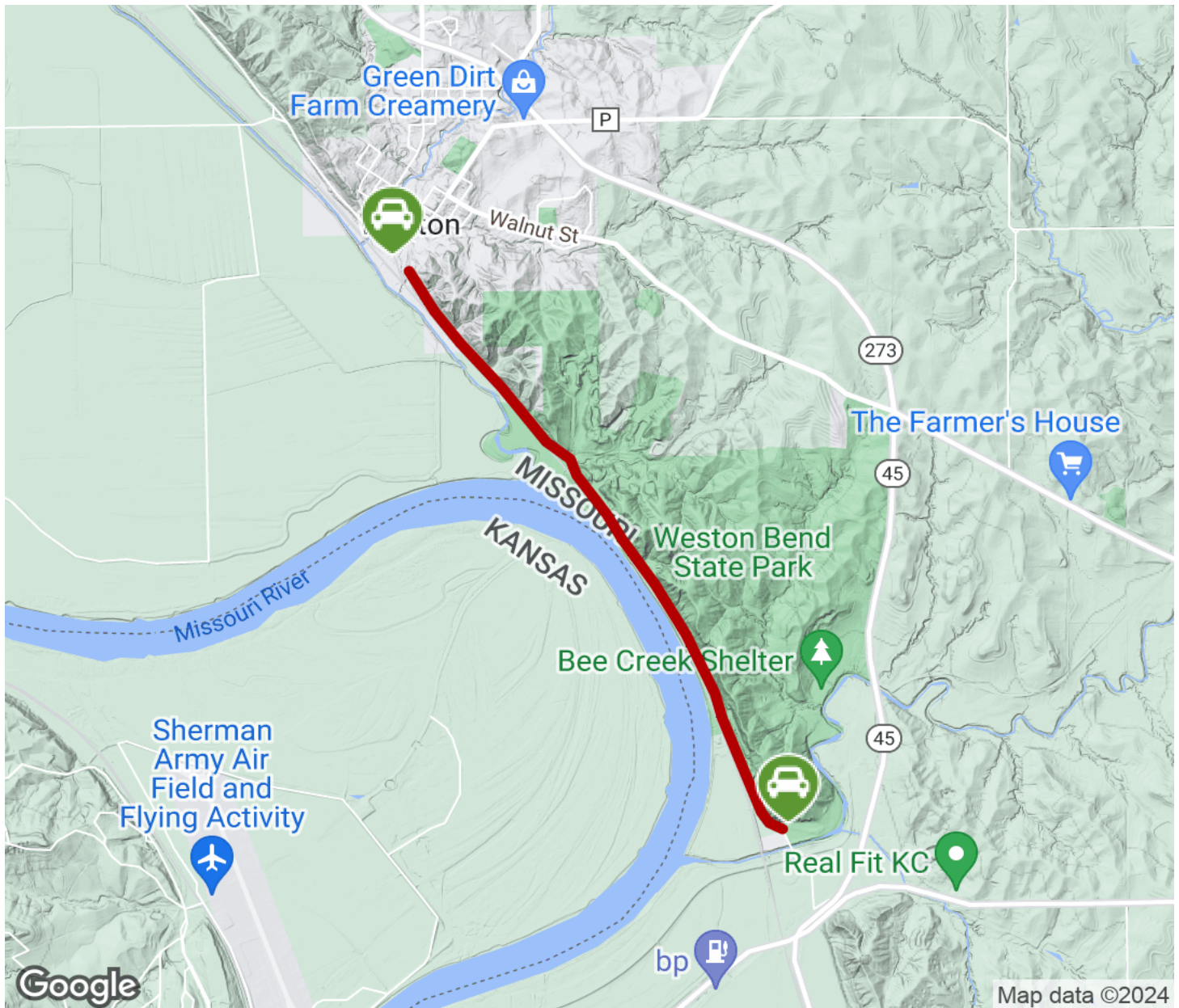
Parking is available at the northern trailhead via the Weston City Hall parking lot, and at the southern trailhead via a paved lot adjacent to the start of the trail. Parking is also available midway through the trail, within Weston Bend State Park.

To reach the northern trailhead from I-29, take exit 20 and head west following signs for MO-273 North towards Weston. Continue onto MO-273, then turn right to stay on 273 at the junction with MO-92. Stay on 273, past the junction with MO-45, and then turn left onto Welt Street in Weston. Then turn right on Spring Street and left onto Main Street, and follow Main Street until you reach the city hall. Parking is available there, and the trail begins off of Market Street, right down Welt Street.



# Weston Bluffs Trail

Missouri



Trailhead



Restroom



Parking



Water Fountain



Tunnel



**TrailLink**  
by Rails-to-Trails Conservancy

**TrailLink.com**