



2025

TrailLink Unlimited 

Guides



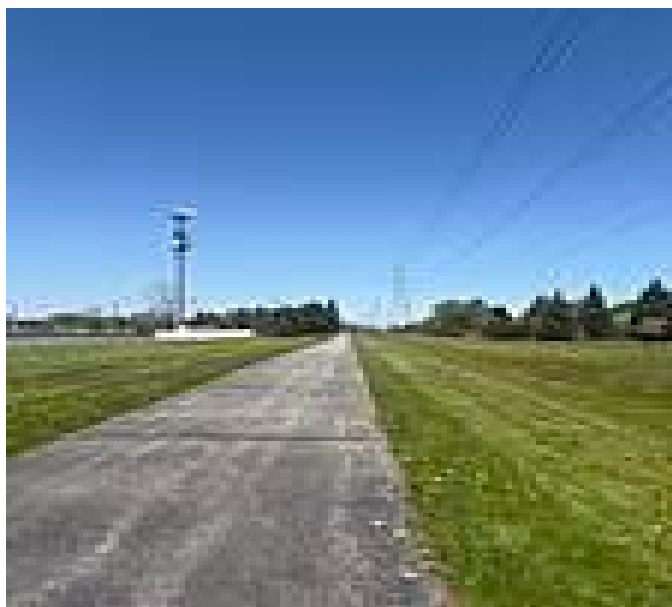
**Saginaw
Township
Pathway**
Michigan



Saginaw Township Pathway

Michigan

This trail continues right where the Kochville Township Multi-use Pathway, on Tittawabasee Road. (In fact, the two trails are



This trail continues right where the [Kochville Township Multi-use Pathway](#), on Tittawabasee Road. (In fact, the two trails are sometimes referred to as the Kochville-Saginaw Pathway). It occupies the same Consumer's Energy electric utility right-of-way for a spell until just after crossing the railroad. From there trail users have to use the sidewalk on N Center Street and then on McCarty Road. After that, the off-road portion restarts, heading south from McCarty, down to Shattuck Road.

The path is part of the Great Lakes Bay Regional Trails system, which includes 100 miles of trails across Bay, Saginaw and Midland County in Michigan.



Saginaw Township Pathway

Michigan

States: Michigan

Counties: Saginaw

Length: 3miles

Trail end points: Tittabawassee Rd. & Center Rd. to Shattuck & Center Rds.

Trail surfaces: Asphalt

Trail category: Greenway/Non-RT

Trail activities: Bike, Inline

Skating, Wheelchair Accessible, Walking

Parking & Trail Access

You can park at the George Olsen Rec. Complex (3120 N. Center Rd., Saginaw, MI 48603)



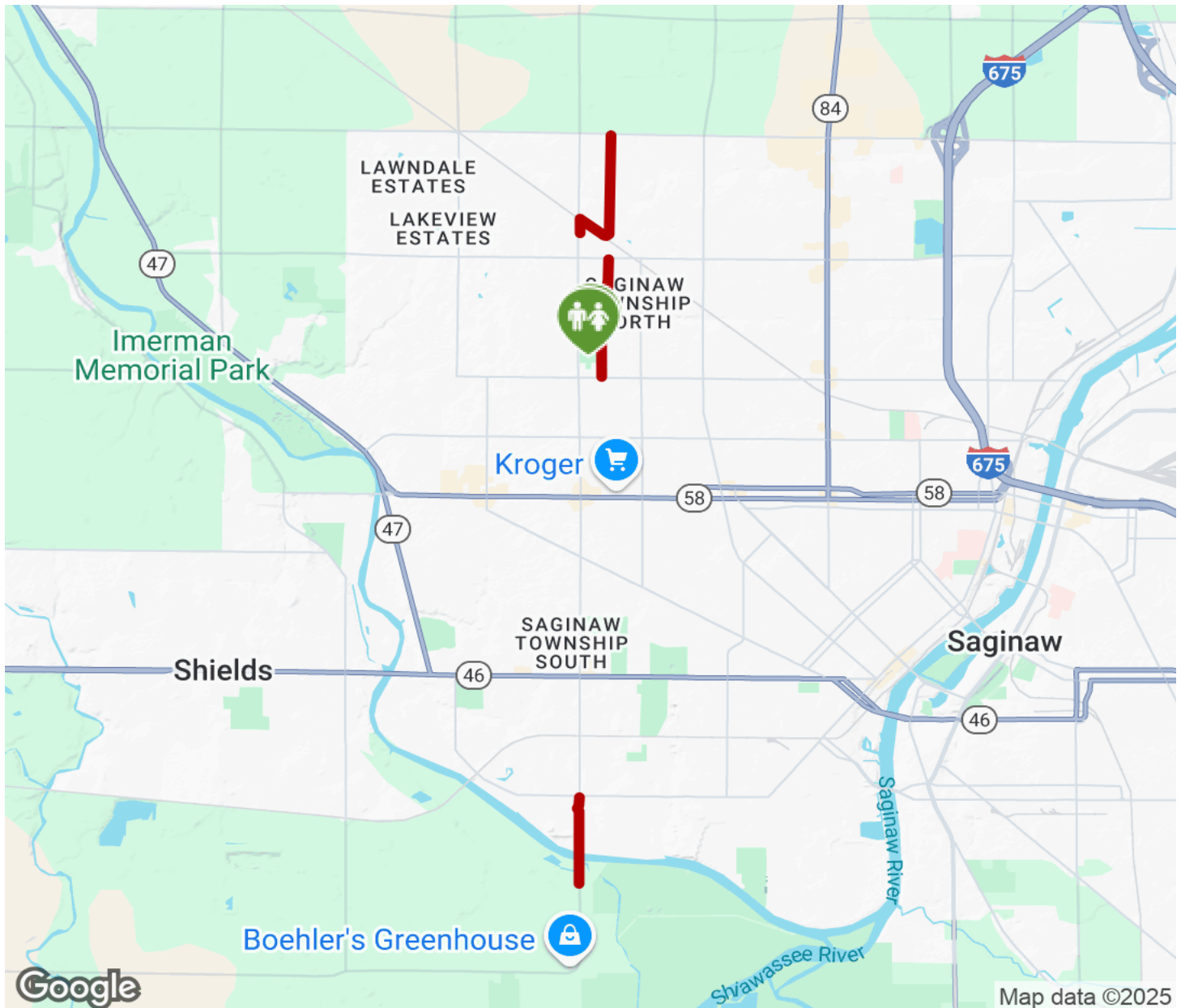
TrailLink
by Rails-to-Trails Conservancy

TrailLink.com



Saginaw Township Pathway

Michigan



Trailhead



Restroom



Parking



Water Fountain



Tunnel



TrailLink
by Rails-to-Trails Conservancy

TrailLink.com