



2025

TrailLink Unlimited



Guides



**KR Trail
(Route of the
Badger)**
Wisconsin



KR Trail (Route of the Badger)

Wisconsin

The KR Trail is a new addition to Kenosha County's growing bike-ped network. The trail picks up where the Kenosha Pike Bike Trail



The KR Trail is a new addition to Kenosha County's growing bike-ped network. The trail picks up where the [Kenosha Pike Bike Trail](#) leaves off, in Petrifying Springs Park. From the northwest corner of the park, the trail launches with winding boardwalk over Pike River. The surface then transitions to asphalt for the rest of its 1.5-mile route parallel to Green Bay Road (Highway 31). Near the end, the trail crosses the highway and begins to parallel Highway KR up to its terminal point at 56th Avenue. Signalized crossings help path users get safely across the roads.

The KR Trail links to the Pike River Pathway.



TrailLink
by Rails-to-Trails Conservancy

TrailLink.com



KR Trail (Route of the Badger)

Wisconsin

States: Wisconsin

Counties: Kenosha

Length: 1.5miles

Trail end points: Petrifying Springs Park at 7th Street to Highway KR

Trail surfaces: Asphalt, Boardwalk

Trail category: Greenway/Non-RT

Trail activities: Bike, Inline

Skating, Wheelchair Accessible, Walking

Parking & Trail Access

Park at Petrifying Springs Park 5555 7th Street, Kenosha.



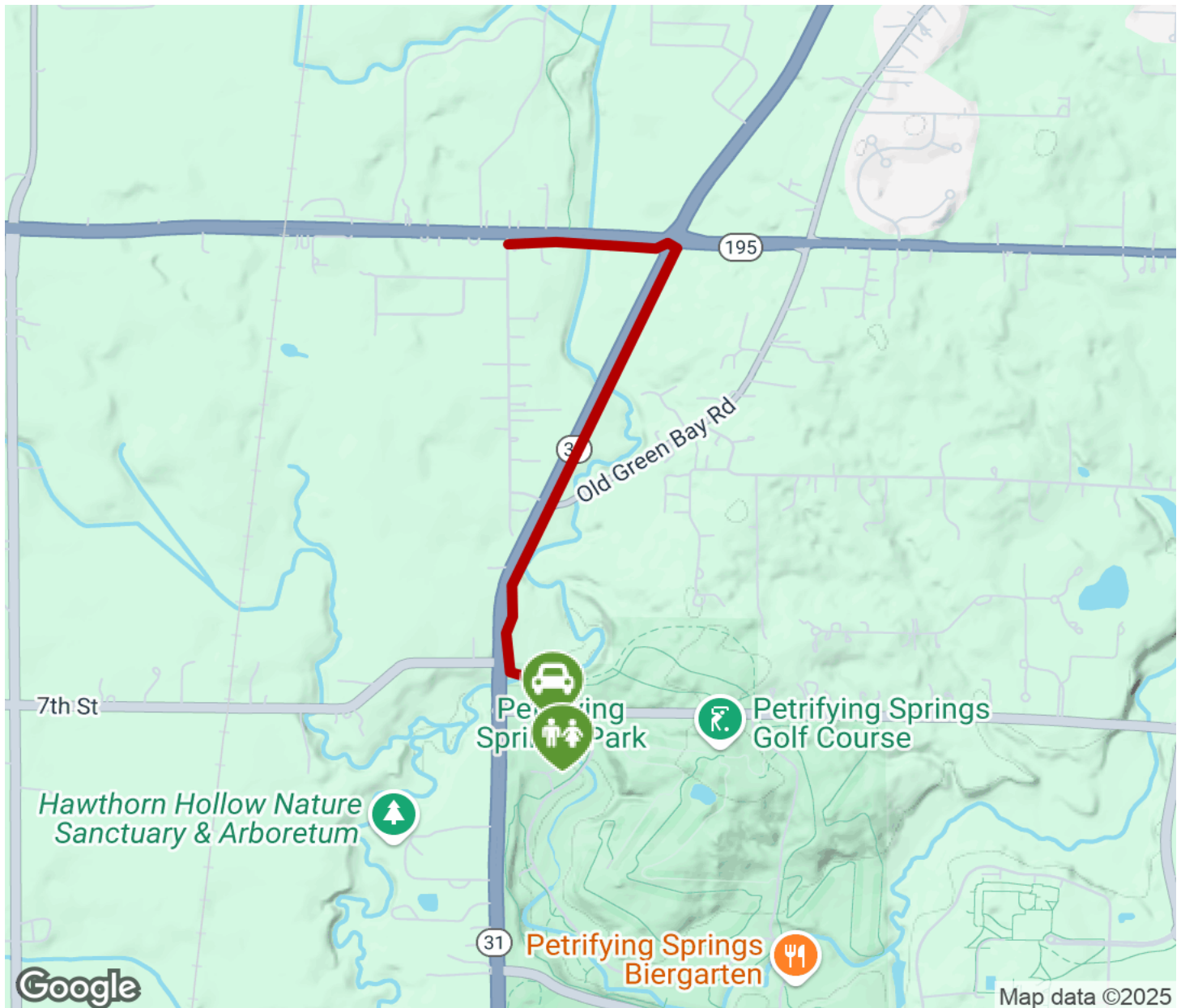
TrailLink
by Rails-to-Trails Conservancy

TrailLink.com



KR Trail (Route of the Badger)

Wisconsin



Trailhead



Restroom



Parking



Water Fountain



Tunnel



TrailLink
by Rails-to-Trails Conservancy

TrailLink.com