



2025

TrailLink Unlimited 

Guides



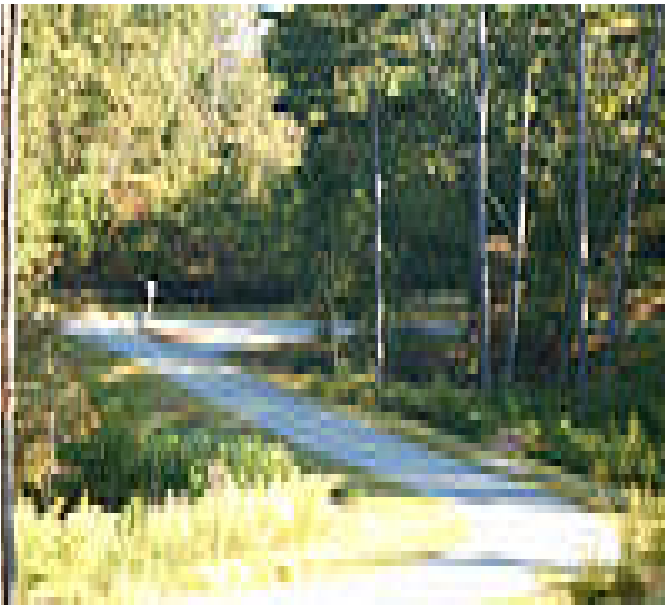
**Settles Bridge
Park Trail**
Georgia



Settles Bridge Park Trail

Georgia

Settles Bridge Park is a 268-acre nature complex with fitness and recreation amenities serving residents of Suwanee. The park



walking dogs.

Apart from the paved trail, the park further features 2.9 miles of soft-surface nature trails. These mainly go into the heart of the park's woodland and have mildly steeper grades than the paved trails in some sections. They are great if you are going wildlife spotting. There are footbridges in spots where the trail crosses the swales and tributaries of the Chattahoochee River. The different trails are color-coded on park maps, but there are no mile markers, although there are map markers at trail intersections.

Settles Bridge Park is a 268-acre nature complex with fitness and recreation amenities serving residents of Suwanee. The park features 4.5 miles of trails, including 1.6 miles of asphalt multiuse paths. Settles Birdge Park Trails were recently added to the National Trails System, a designation for trails that "link communities to recreational opportunities on public lands and in local parks across the nation".

The paved trail is 1.6 miles and near the park entrance on Johnson Road (just south of this is an elementary school). From the parking lot, the trail meanders across meadows, and through the woodland areas, heading west. A center line divides the paved trail in half, for ease of movement. The trail is wide enough to accommodate users ranging from cyclists, to joggers, to folks pushing strollers or



Settles Bridge Park Trail

Georgia

States: Georgia

Counties: Gwinnett

Length: 1.6miles

Trail end points: Park parking (Johnson Road)
to Settles Bridge Park

Trail surfaces: Asphalt

Trail category: Greenway/Non-RT

Trail activities: Bike, Wheelchair

Accessible, Walking

Parking & Trail Access

The main parking for the park can be found on Johnson St. (address is 380 Johnson Rd, Suwanee, GA). Among other amenities available at the park are playground, a skate park, restrooms, picnic pavilions and a dog park.



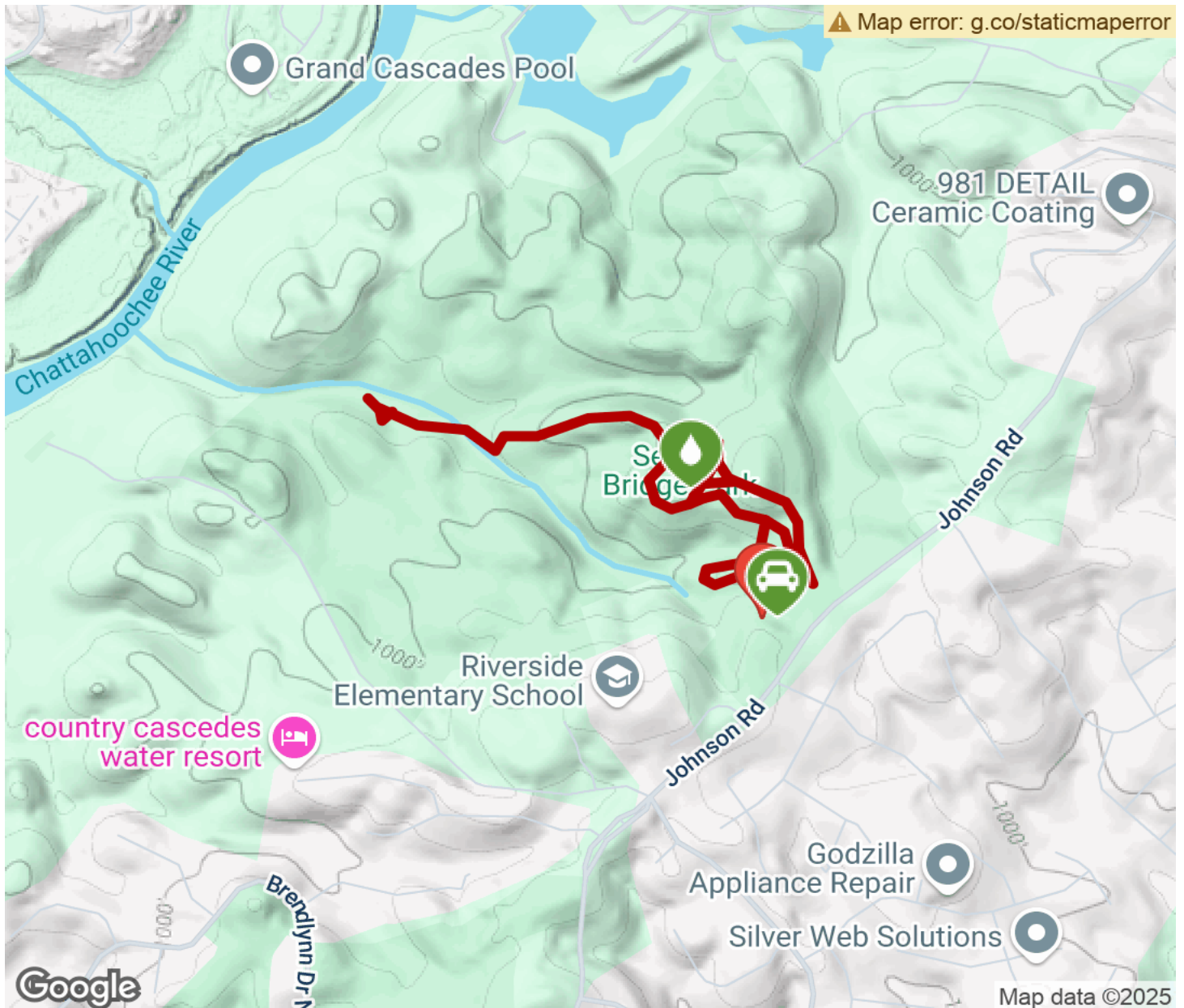
TrailLink
by Rails-to-Trails Conservancy

TrailLink.com



Settles Bridge Park Trail

Georgia



Trailhead



Restroom



Parking



Water Fountain



Tunnel



TrailLink
by Rails-to-Trails Conservancy

TrailLink.com