



2026

TrailLink Unlimited



Guides



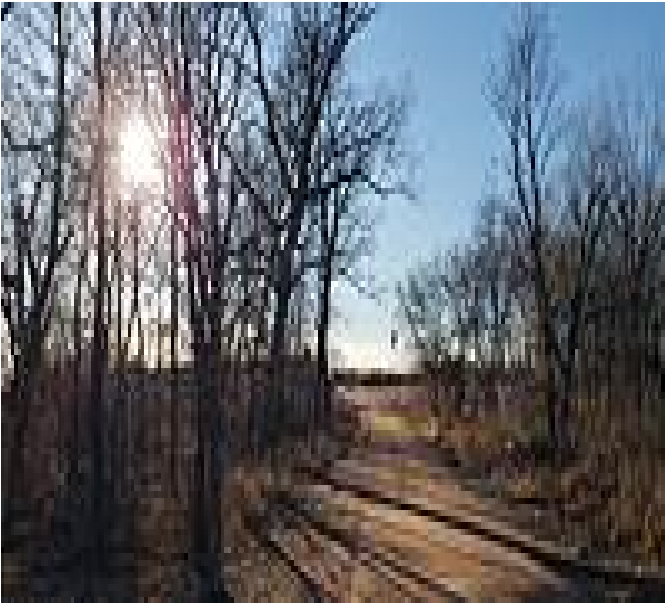
**Lakefront  
Trail**  
*Texas*



## Lakefront Trail

Texas

*At nearly 4 miles, the Lakefront trail connects Beard Park to McCord Park via scenic lakeshore route. The trail is a combination*



At nearly 4 miles, the Lakefront trail connects Beard Park to McCord Park via scenic lakeshore route. The trail is a combination of crushed granite and boardwalk over wetlands. It was officially opened in the Fall of 2017 in Little Elm, an extended suburb of Dallas, Texas. The trail is a combination of crushed gravel and boardwalk, drawing walkers, joggers and mountain bikers alike. There are access points to the water for those wishing to fish as well.



# Lakefront Trail

Texas

**States:** Texas

**Counties:** Denton

Length: 4miles

**Trail end points:** Beard Park to McCord Park

**Trail surfaces:** Boardwalk, Concrete, Crushed Stone

**Trail category:** Greenway/Non-RT

**Trail activities:** Bike, Horseback Riding, Mountain Biking, Walking

## Parking & Trail Access

The trail has four trail heads:

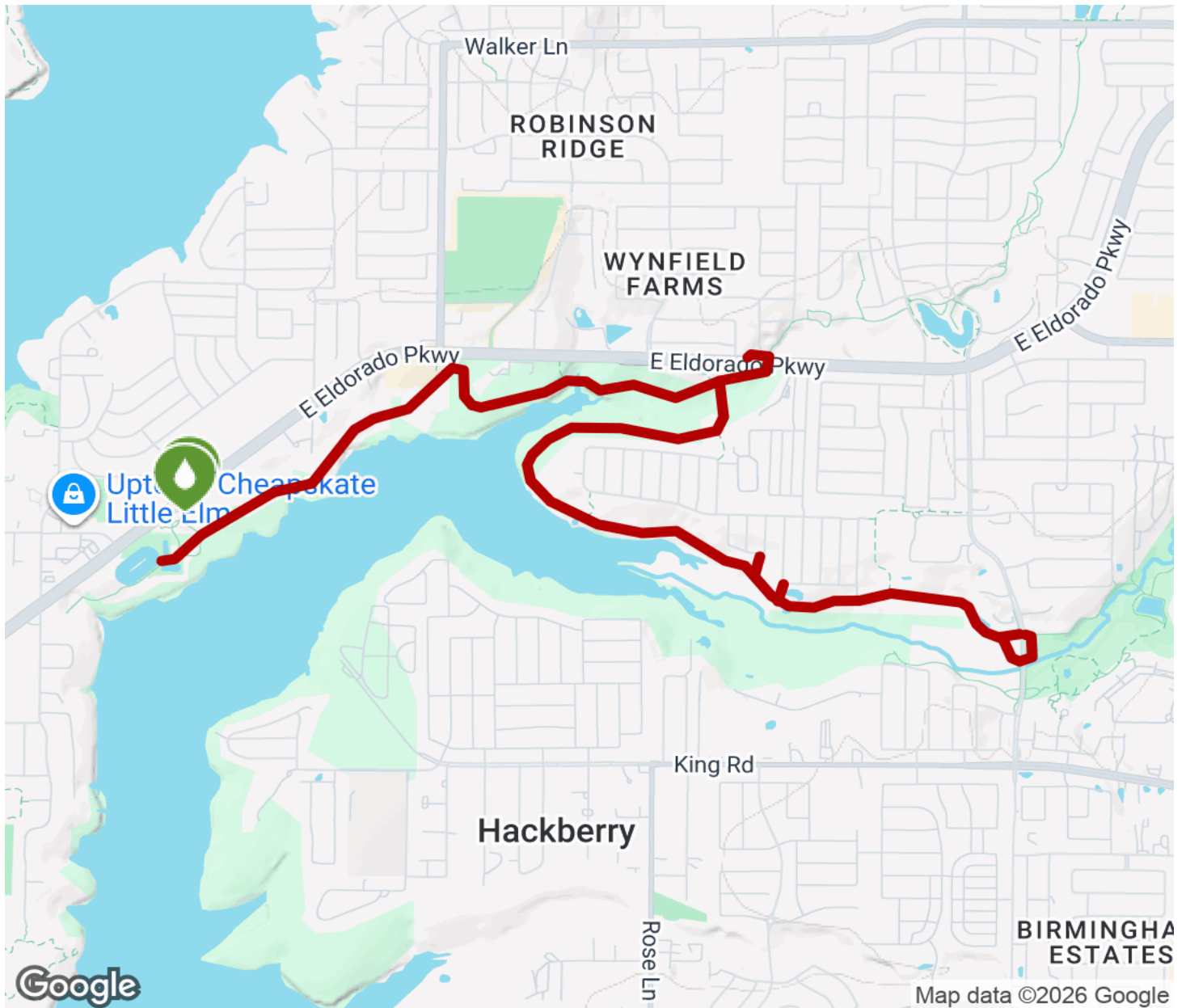
- Hula Hut restaurant, southwest of Beard Park
- Beard Park (310 E. Eldorado Parkway)
- Harts Road & El Dorado Parkway
- McCord Park (2050 FM423)

The two parks provide a number of amenities, including parking. Beard Park offers restrooms, a pavilion and a tree-themed playground. McCord Park has picnic tables, a playground, passive green space and an 18-hole disc golf course. Hula hut trailhead parking is the lot east of Hula Hut and not the actual restaurant lot.



# Lakefront Trail

Texas



Trailhead



Restroom



Parking



Water Fountain



Tunnel



**TrailLink**  
by Rails-to-Trails Conservancy

**TrailLink.com**