



2025

TrailLink Unlimited 

Guides



Belmont Trail *Pennsylvania*



Belmont Trail

Pennsylvania

Constructed as part of the Belmont subdivision/Shoppers At Belmont mixed use development, the Belmont Trail is part of



Constructed as part of the Belmont subdivision/Shoppers At Belmont mixed use development, the Belmont Trail is part of Manheim Township's growing network of multi-use greenways and the latest of several trails connecting the suburbs surrounding Lancaster. The asphalt trail begins on the western side of the property at the David Mayer house, then crosses busy Fruitville Pike. The trail then continues along the south end of the Shoppes At Belmont, passing Whole Foods and a stormwater retention pond that has been beautified with a fountain and picnic area. The trail then enters the residential section of Belmont, passing stone and brick lime kilns built in the 19th century and recently restored, before briefly following Mayer Place to the east end of the development. It then crosses into the Glen Moore neighborhood, ending at Crescent Ave.



Belmont Trail

Pennsylvania

States: Pennsylvania

Counties: Lancaster

Length: 0.5miles

Trail end points: David Mayer House,
immediately west of Fruitville Pike to Crescent
Ave., Glen Moore

Trail surfaces: Asphalt

Trail category: Greenway/Non-RT

Trail activities: Bike, Walking, Wheelchair
Accessible

Parking & Trail Access

Parking is available at the Shoppes At Belmont off Fruitville Pike.



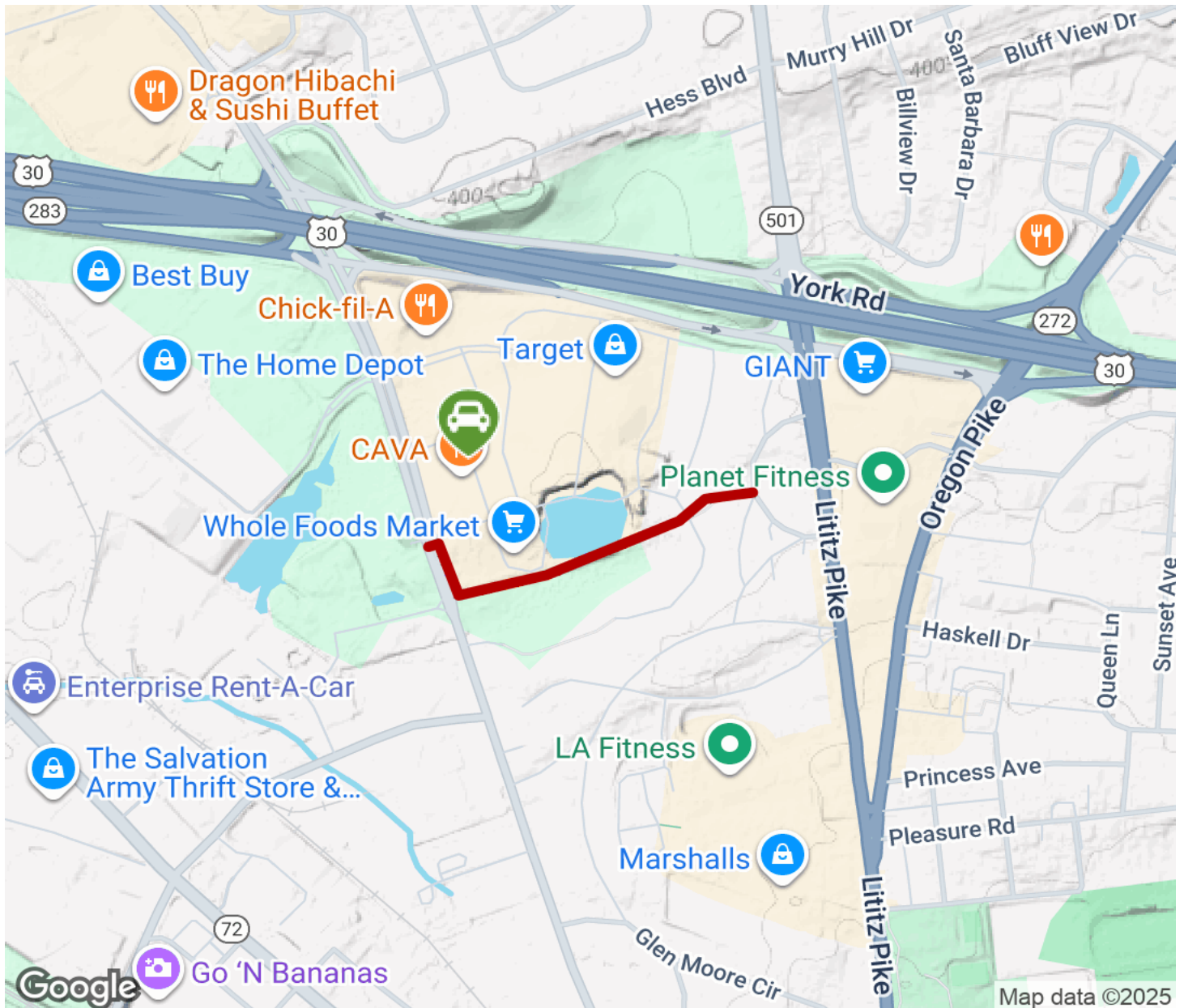
TrailLink
by Rails-to-Trails Conservancy

TrailLink.com



Belmont Trail

Pennsylvania



Trailhead



Restroom



Parking



Water Fountain



Tunnel



TrailLink
by Rails-to-Trails Conservancy

TrailLink.com