



2026

TrailLink Unlimited 

Guides



## Bunkerville Bicycle and Pedestrian Trail

*Nevada*



## **Bunkerville Bicycle and Pedestrian Trail**

*Nevada*

*Bunkerville Bicycle and Pedestrian Trail is a 2.5-mile non-motorized pathway paralleling State Route 170 between*



Bunkerville Bicycle and Pedestrian Trail is a 2.5-mile non-motorized pathway paralleling State Route 170 between Bunkerville and the City of Mesquite. The trail offers a safe conduit for commuting and recreating between the two municipalities. It was thoughtfully designed for its setting: because of how high the temperatures can soar during the day, the trail features shaded benches placed at regular intervals. It's also well-lit, so that trail users can utilize the pathway in the coolness of the evening. Three trail bridges take users over washes, and keep them above flooding.



# Bunkerville Bicycle and Pedestrian Trail

*Nevada*

**States:** Nevada

**Counties:** Clark

Length: 2.5miles

**Trail end points:** 2nd W St (Bunkerville) to  
Jensen Drive (Mesquite)

**Trail surfaces:** Concrete

**Trail category:** Greenway/Non-RT

**Trail activities:** Bike, Walking

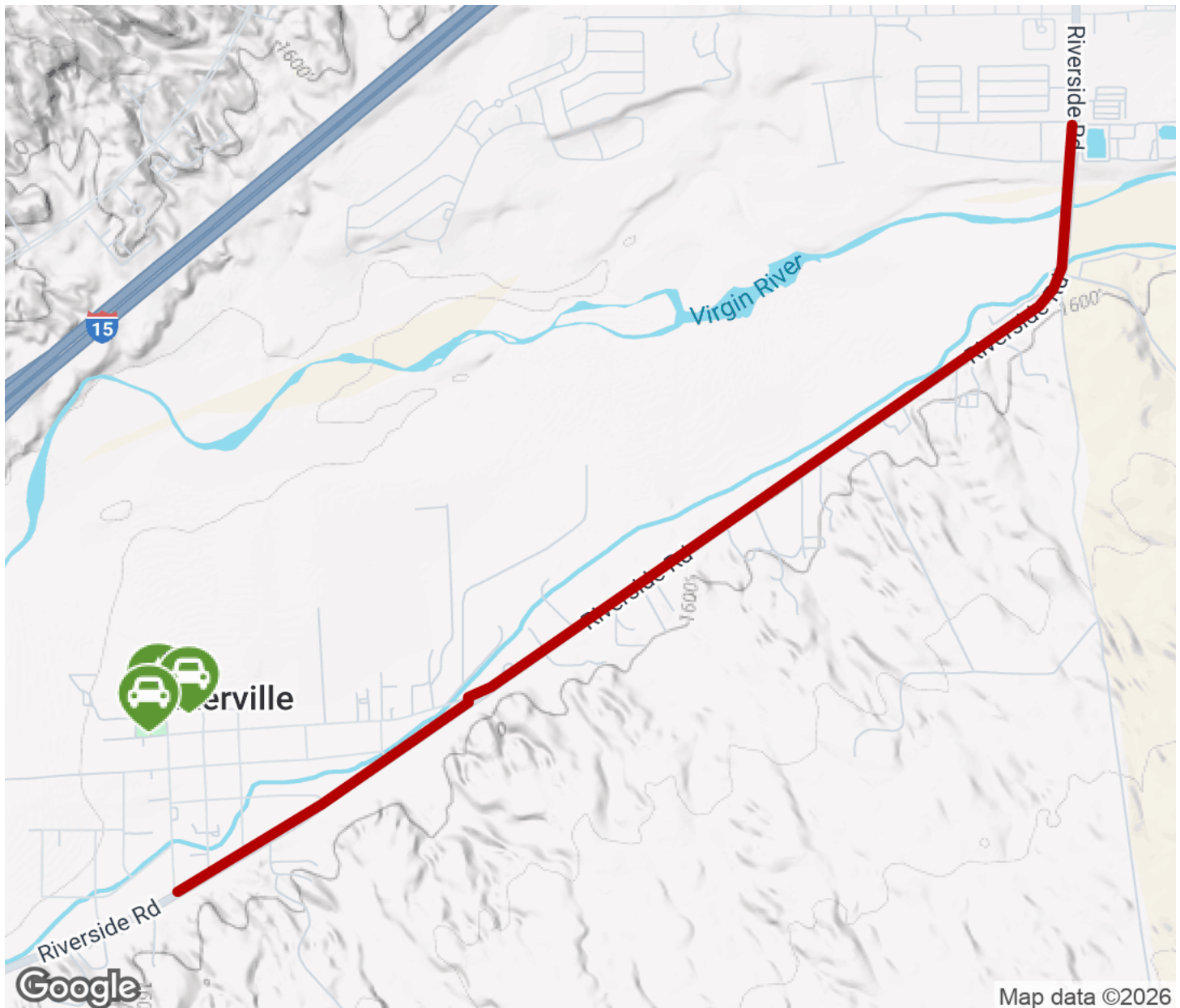
## Parking & Trail Access

Parking is available on the west end of the trail in the Thomas Leavitt Park and at the adjacent Community Center.



# Bunkerville Bicycle and Pedestrian Trail

Nevada



Trailhead



Restroom



Parking



Water Fountain



Tunnel



**TrailLink**  
by Rails-to-Trails Conservancy

**TrailLink.com**