



2024

TrailLink Unlimited



Guides



## Rocky Fork Trail

*Ohio*



## Rocky Fork Trail

Ohio

*The Rocky Fork Trail is a developing pathway in Westerville and New Albany, which are northeastern suburbs of Columbus. The*



The Rocky Fork Trail is a developing pathway in Westerville and New Albany, which are northeastern suburbs of Columbus. The paved trail is currently available in five disconnected segments.

The northernmost section spans 1.2 miles and connects Bevelhymer Park and Rocky Fork Metro Park. Along this pathway, travelers will have access to athletic fields, a playground, picnic area, a dog park, parking and restrooms. To the south, the next section runs along the wide grassy fields of Thompson Park.

The final three segments of the trail parallel E. Johnstown Road (US 62); they offer short commuting routes to commercial and residential areas.



# Rocky Fork Trail

Ohio

**States:** Ohio

**Counties:** Franklin

Length: 1.6miles

**Trail end points:** Rocky Fork Metro Park (Westerville) to E. Johnstown Road/US 62 and Commission Dr. (New Albany)

**Trail surfaces:** Asphalt

**Trail category:** Greenway/Non-RT

**Trail activities:** Bike,Inline Skating,Wheelchair Accessible,Walking

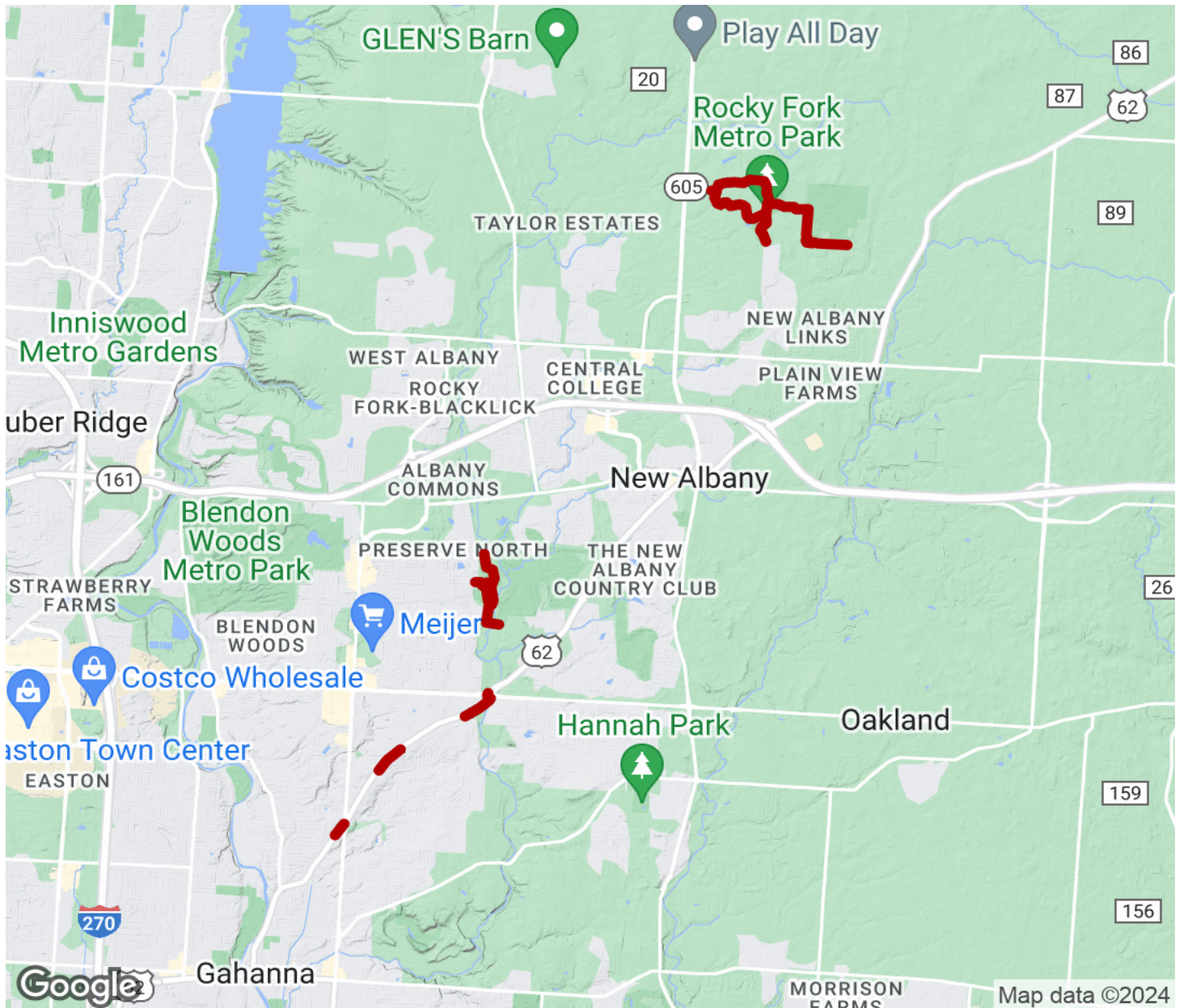
## Parking & Trail Access

Parking is available in Rocky Fork Metro Park (7180 Walnut St., Westerville) and Thompson Park (5600 Thompson Road, Columbus).



# Rocky Fork Trail

Ohio



Trailhead



Restroom



Parking



Water Fountain



Tunnel



**TrailLink**  
by Rails-to-Trails Conservancy

**TrailLink.com**