



2026

TrailLink Unlimited



Guides



Westside Trail (IA)

Iowa



Westside Trail (IA)

Iowa

One day spanning 1.75 miles, the Westside Trail will serve as an important connector in the southeast Iowa community of



At the southern end of the trail, travelers can connect to the 4-mile [Kent Stein to Deep Lakes Park Trail](#), which heads south to Deep Lakes Park.

One day spanning 1.75 miles, the Westside Trail will serve as an important connector in the southeast Iowa community of Muscatine, providing access to Kent Stein Park and Discovery Park. Currently, just shy of half a mile has been built. Paralleling Houser Street, the paved pathway runs from Kent Stein Park north to Hershey Avenue, where it connects to the [Hershey Avenue Trail](#) heading west along the roadway.

The 66-acre Kent Stein Park offers athletic fields, restrooms, drinking fountains and picnic shelters. Across from the park (west of Houser Street), lies the Muscatine Pollinator Park, which opened in 2018 and has been planted with native wildflowers to attract bees and butterflies.



Westside Trail (IA)

Iowa

States: Iowa

Counties: Muscatine

Length: 0.4miles

Trail end points: Kent Stein Park at Houser St.
to Hershey Ave. and Houser St.

Trail surfaces: Asphalt

Trail category: Greenway/Non-RT

Trail activities: Bike,Inline

Skating,Walking,Wheelchair Accessible

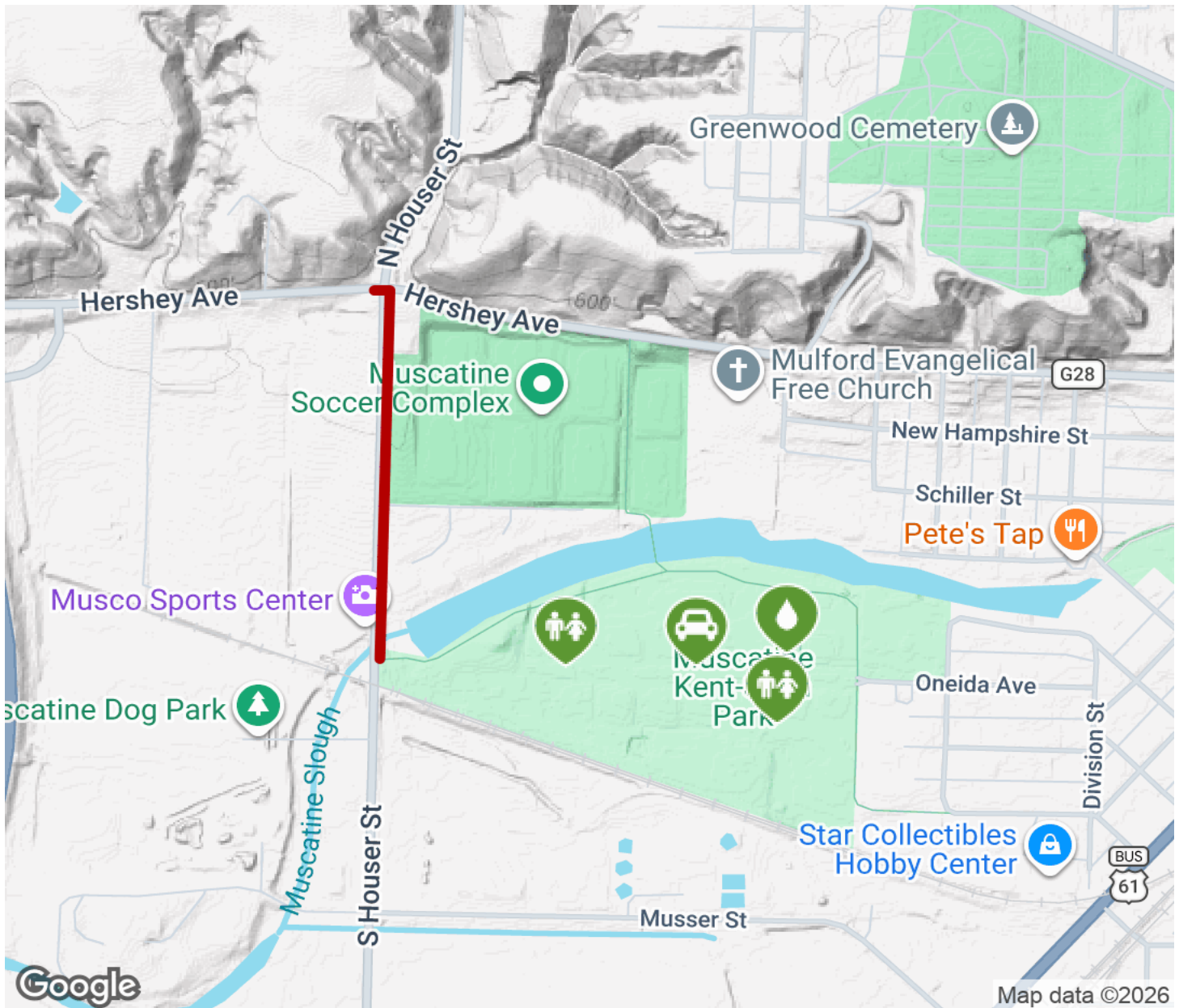
Parking & Trail Access

Parking and restrooms are available in Kent Stein Park (Houser St. and Oneida Ave.).



Westside Trail (IA)

Iowa



Trailhead



Restroom



Parking



Water Fountain



Tunnel



TrailLink
by Rails-to-Trails Conservancy

TrailLink.com