



2026

TrailLink Unlimited



Guides



**Bonner  
Streetcar Trail**  
*Montana*



## Bonner Streetcar Trail

Montana

*The Bonner Streetcar Trail serves as a connector for bicyclists and pedestrians in the Bonner-West Riverside community of western*



Future plans call for extending the trail an additional 1.7 miles along the Clark Fork River to Speedway Avenue in East Missoula.

The Bonner Streetcar Trail serves as a connector for bicyclists and pedestrians in the Bonner-West Riverside community of western Montana. The rail-trail follows a former electric streetcar line of the Missoula Street Railway Company which ran between Milltown and Missoula from 1910-1932.

Currently, a 0.6-mile section of paved pathway is open, paralleling Montana Highway 200 from Tamarack Road to Laquna Street, with a crossing of the Blackfoot River on its east side. A highlight of the route is its passage through Bonner's Two Rivers Memorial Park, which offers an interpretive kiosk about the area's role in the Lewis and Clark expedition and the restoration of the Milltown Superfund site, the first of its kind in Montana.



# Bonner Streetcar Trail

Montana

**States:** Montana

**Counties:** Missoula

Length: 0.9miles

**Trail end points:** Tamarack Road and Montana Highway 200 to Laquna St. and Montana Highway 200

**Trail surfaces:** Asphalt

**Trail category:** Rail-Trail

**Trail activities:** Bike,Inline

Skating, Walking, Wheelchair Accessible

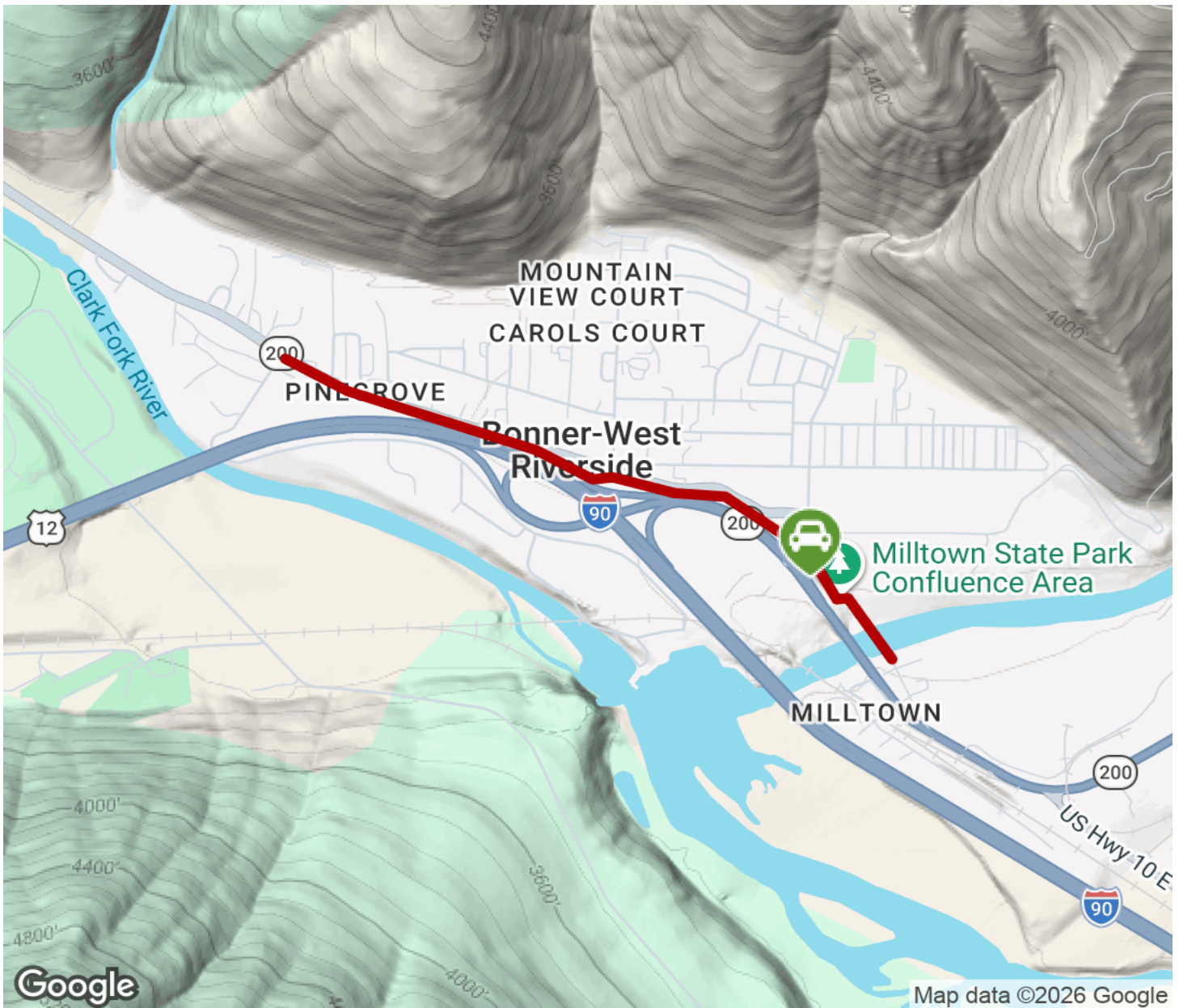
## Parking & Trail Access

Parking is available in the Two Rivers Memorial Park (1st Street and Montana Highway 200, Bonner-West Riverside).



# Bonner Streetcar Trail

Montana



Trailhead



Restroom



Parking



Water Fountain



Tunnel



**TrailLink**  
by Rails-to-Trails Conservancy

**TrailLink.com**