



2025

TrailLink Unlimited 

Guides



## Oahe Dam Downstream Fort Pierre Trail

*South Dakota*



## Oahe Dam Downstream Fort Pierre Trail

*South Dakota*

*The Oahe Dam Downstream Fort Pierre Trail begins at Oahe Downstream Recreation Area, a state park located under the Oahe*



The Oahe Dam Downstream Fort Pierre Trail begins at Oahe Downstream Recreation Area, a state park located under the Oahe Dam on the Missouri River. The park is known for its bald eagles and butterflies, and is a popular place for camping, boating, and fishing. Most of the trail passes through farmland and prairie. The trail ends on the outskirts of Fort Pierre. The Riverfront Trail which starts a few blocks east, allows bicyclists to cross the Missouri River into Pierre.



# Oahe Dam Downstream Fort Pierre Trail

*South Dakota*

**States:** South Dakota

**Counties:** Stanley

**Length:** 4.2miles

**Trail end points:** Oahe Downstream

Recreation Area, near Power House Rd and SR 1806 to Skerrols St between Port Charlotte Ave and Caol-Ila Ct

**Trail surfaces:** Asphalt, Concrete

**Trail category:** Rail-Trail

**Trail activities:** Bike, Wheelchair Accessible

## Parking & Trail Access

Parking is available near the Powwow Grounds in Oahe Downstream Recreation Area. From SR 1806, turn onto Power House Rd, then take the first right.



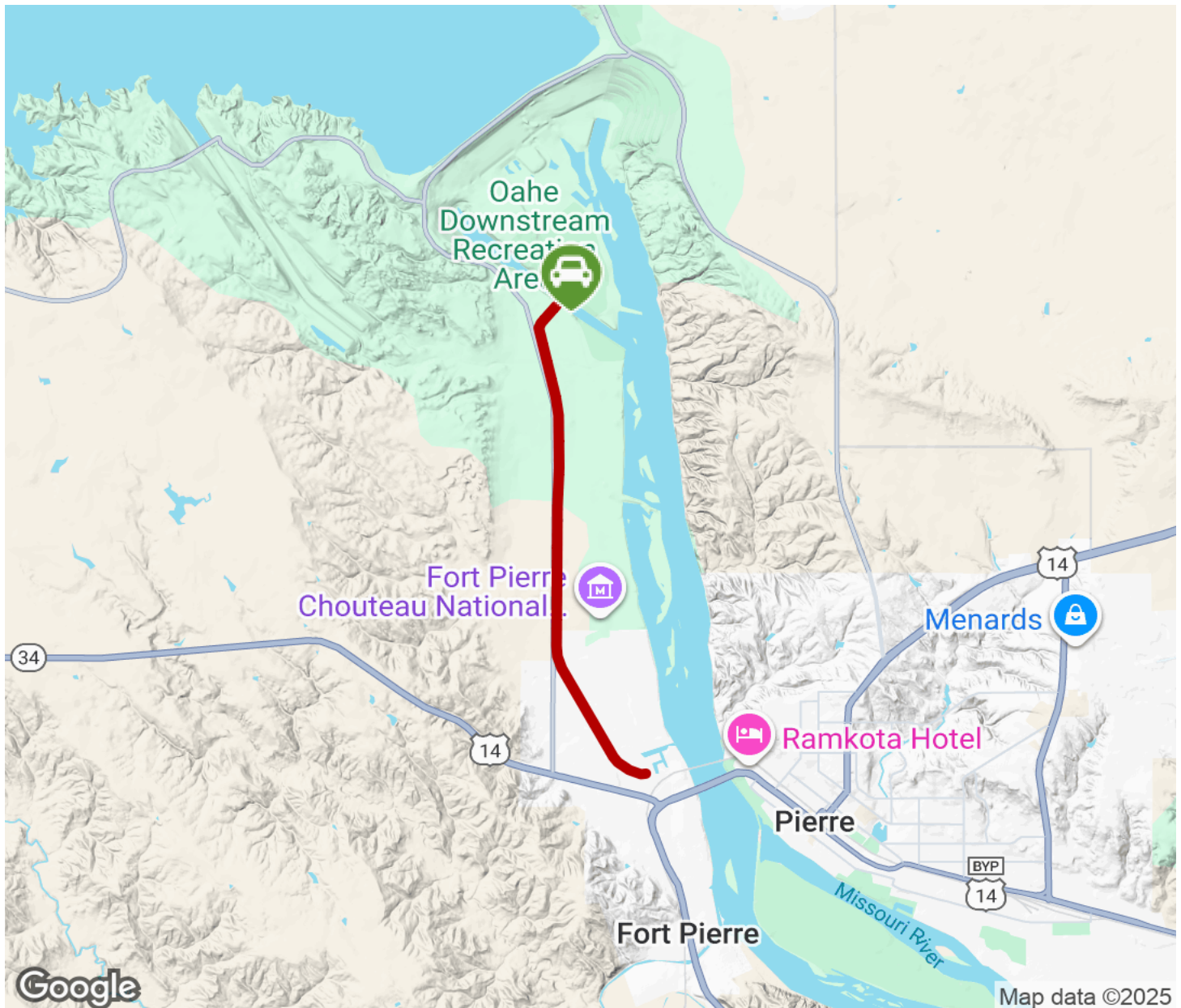
**TrailLink**  
by Rails-to-Trails Conservancy

**TrailLink.com**



# Oahe Dam Downstream Fort Pierre Trail

South Dakota



Trailhead



Restroom



Parking



Water Fountain



Tunnel



**TrailLink**  
by Rails-to-Trails Conservancy

**TrailLink.com**