



2024

TrailLink Unlimited 

Guides



**John King
Trail**
Iowa



John King Trail

Iowa

The John King Trail runs along a former railroad corridor in Albia, Iowa. From 3rd Ave E to Benton Ave, the trail runs parallel to an



The John King Trail runs along a former railroad corridor in Albia, Iowa. From 3rd Ave E to Benton Ave, the trail runs parallel to an active railroad line. Cruizin' Albia Park, which has a playground and baseball diamond, is next to the trail. The rest of the trail goes through a residential neighborhood. There are plans to extend the John King Trail and build new trails connecting it to other city facilities.



John King Trail

Iowa

States: Iowa

Counties: Monroe

Length: 0.5miles

Trail end points: 3rd Ave E and S 7th St to C
Ave E and N 12th St

Trail surfaces: Asphalt

Trail category: Rail-Trail

Trail activities: Bike, Wheelchair Accessible

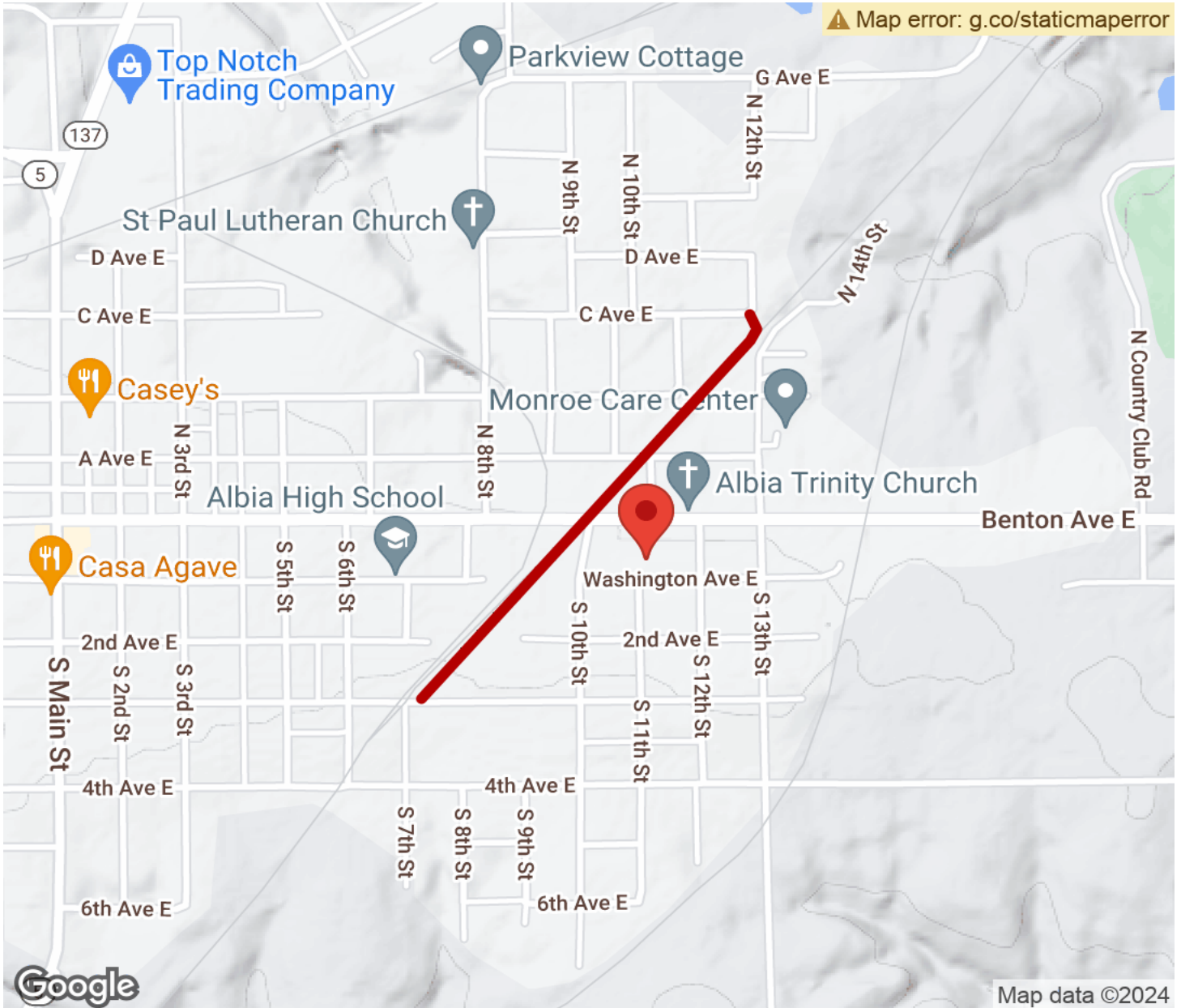
Parking & Trail Access

Parking is available at Cruizin' Albia Park (Washington Ave E and S 11th St).



John King Trail

Iowa



Trailhead



Restroom



Parking



Water Fountain



Tunnel



TrailLink
by Rails-to-Trails Conservancy

TrailLink.com