



2025

TrailLink Unlimited 

Guides



**Littleton
Riverwalk**
New Hampshire



Littleton Riverwalk

New Hampshire

If you find yourself exploring the town of Littleton, New Hampshire, do yourself a favor and hit the riverwalk. Though only



At the western end of the trail, a steel suspension footbridge connects from there to Saranac Street. The Curran Suspension Bridge might make for a bouncy crossing, but also offers bountiful views of the water and the covered bridge downstream

If you find yourself exploring the town of Littleton, New Hampshire, do yourself a favor and hit the riverwalk. Though only half a mile long, the riverside walkway is beloved by tourists coming to see the covered bridge, and a getaway for locals who need a tranquil moment in the day.

The paved path stretches from Riverside Drive in the west to Riverglen Lane in the east. To access it from downtown Littleton, you'll have to cross the Ammonoosuc River. Luckily the crossings are anything but boring. From the parking on Mill Road, you can take the Riverwalk Covered Bridge, a 352-ft pedestrian bridge which was constructed in the 2000s has quickly become both a favorite subject of photos and a vantage point for pictures of the river.



Littleton Riverwalk

New Hampshire

States: New Hampshire

Counties: Grafton

Length: 0.5miles

Trail end points: Riverglen Lane to Riverside Drive

Trail surfaces: Asphalt

Trail category: Greenway/Non-RT

Trail activities: Bike, Walking, Wheelchair Accessible

Parking & Trail Access

There is public parking on Mill Street, with restaurants and cafes near the mouth of the covered bridge. (Note that both bridges are pedestrian only.)

You can also park that the lot at end of Riverglen Lane, west of the Senior Center.



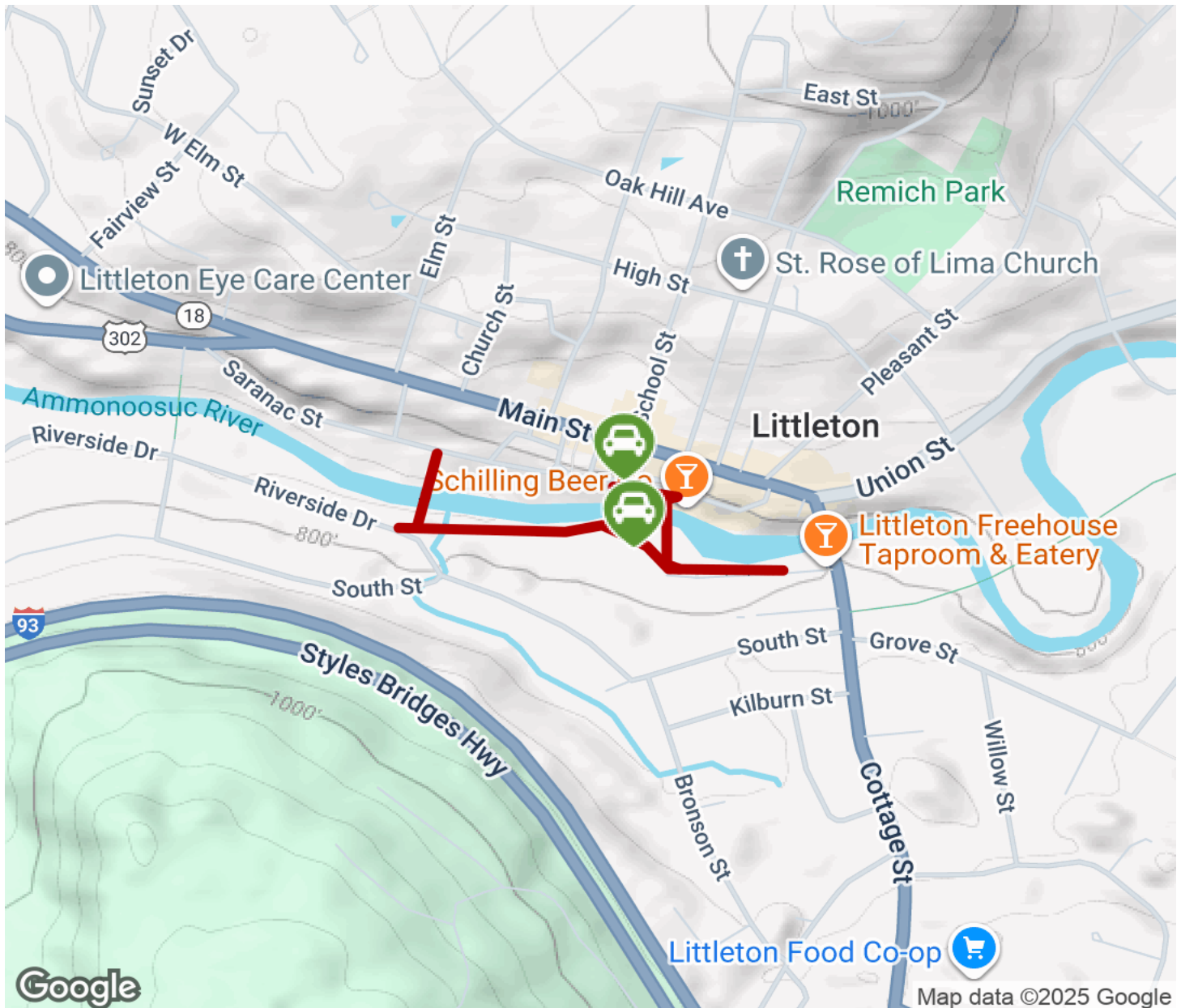
TrailLink
by Rails-to-Trails Conservancy

TrailLink.com



Littleton Riverwalk

New Hampshire



Trailhead



Restroom



Parking



Water Fountain



Tunnel



TrailLink
by Rails-to-Trails Conservancy

TrailLink.com