



2025

TrailLink Unlimited 

Guides



**Augustine  
Trail**  
*Iowa*



## Augustine Trail

Iowa

*A short, paved path that runs through open fields and clusters of trees alongside Beaver Creek, local residents use the Augustine*



A short, paved path that runs through open fields and clusters of trees alongside Beaver Creek, local residents use the Augustine Trail both as a convenient means of recreation and dog-walking, as well as a safe and useful off-road connection to the larger area trail system. The trail runs for just over a mile, connecting to the [Northwest 62nd Avenue Trail](#) on one end and providing trail access to a suburban neighborhood and nearby elementary school on the other end. While mostly handy as a means of taking a quick and pleasant neighborhood stroll or bike ride, the trail forms part of a network that allows residents to travel via trail all the way into Des Moines and beyond.



# Augustine Trail

*Iowa*

**States:** Iowa

**Counties:** Polk

Length: 1.03miles

**Trail end points:** Augustine Court to  
Northwest 62nd Avenue Trail

**Trail surfaces:** Asphalt

**Trail category:** Greenway/Non-RT

**Trail activities:** Bike,Inline

Skating,Walking,Wheelchair Accessible

## Parking & Trail Access

Street parking is available at the northern end of the trail; be sure to follow any posted signs.



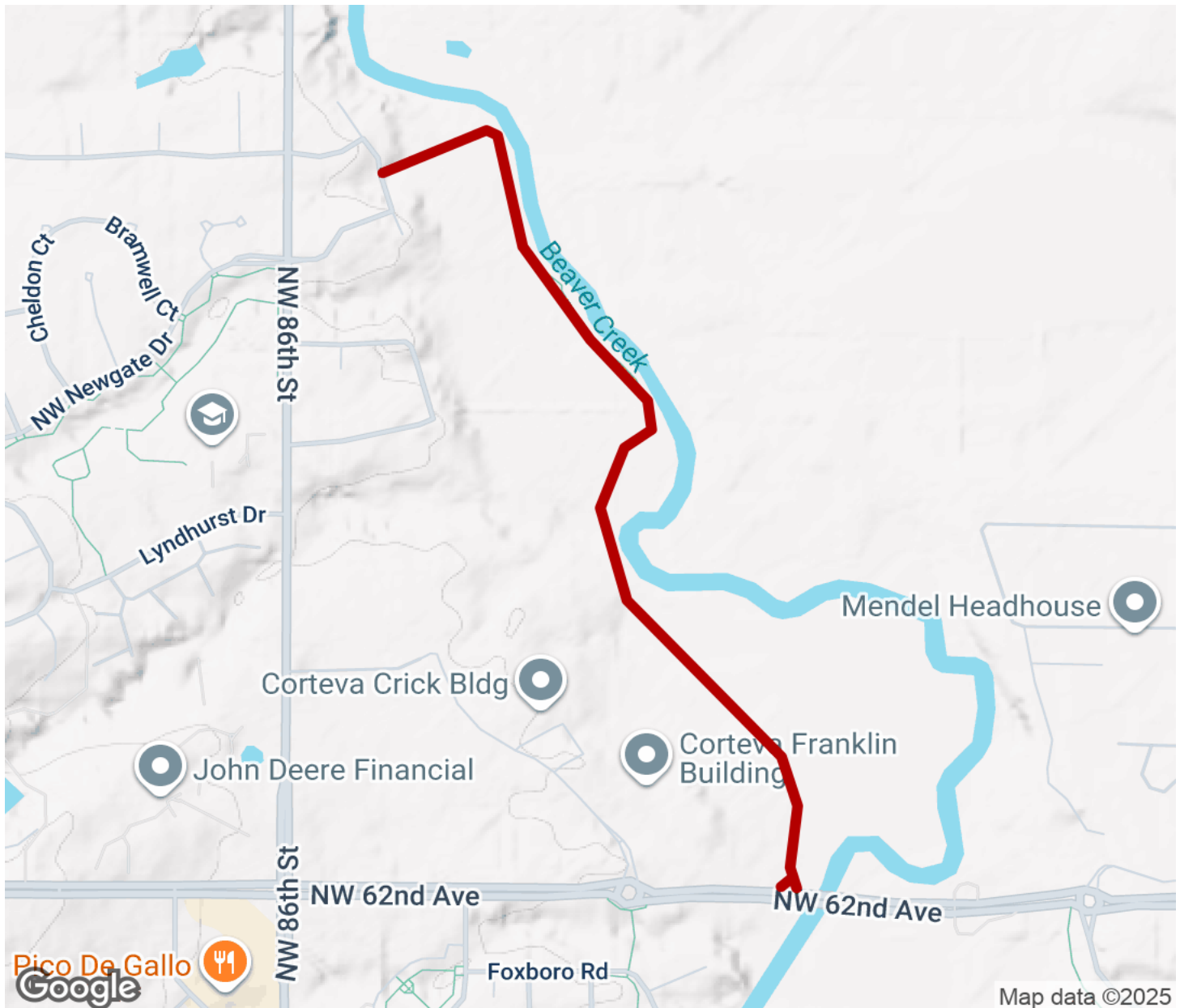
**TrailLink**  
by Rails-to-Trails Conservancy

**TrailLink.com**



# Augustine Trail

Iowa



Trailhead



Restroom



Parking



Water Fountain



Tunnel



**TrailLink**  
by Rails-to-Trails Conservancy

**TrailLink.com**