



2025

TrailLink Unlimited 

Guides



## Sunrise Expressway Shared-Use Path

*Oregon*



## Sunrise Expressway Shared-Use Path

Oregon

*Located in the Portland suburb of Clackamas, this trail extends just over 1 mile. The paved pathway begins on SE Mather Road, in an*



Located in the Portland suburb of Clackamas, this trail extends just over 1 mile. The paved pathway begins on SE Mather Road, in an industrial part of town, and heads southeast, paralleling the Sunrise Expressway (State Route 224) for the final half of the trail. There are lane markings on the trail, and signage marking the beginning and the end of the trail (at the intersection of SR 224 and SR 212).



# Sunrise Expressway Shared-Use Path

Oregon

**States:** Oregon

**Counties:** Clackamas

Length: 1.3miles

**Trail end points:** SE Mather Rd to SR 212

**Trail surfaces:** Asphalt

**Trail category:** Greenway/Non-RT

**Trail activities:** Bike,Inline Skating,Walking

## Parking & Trail Access

There is no dedicated parking for this trail.



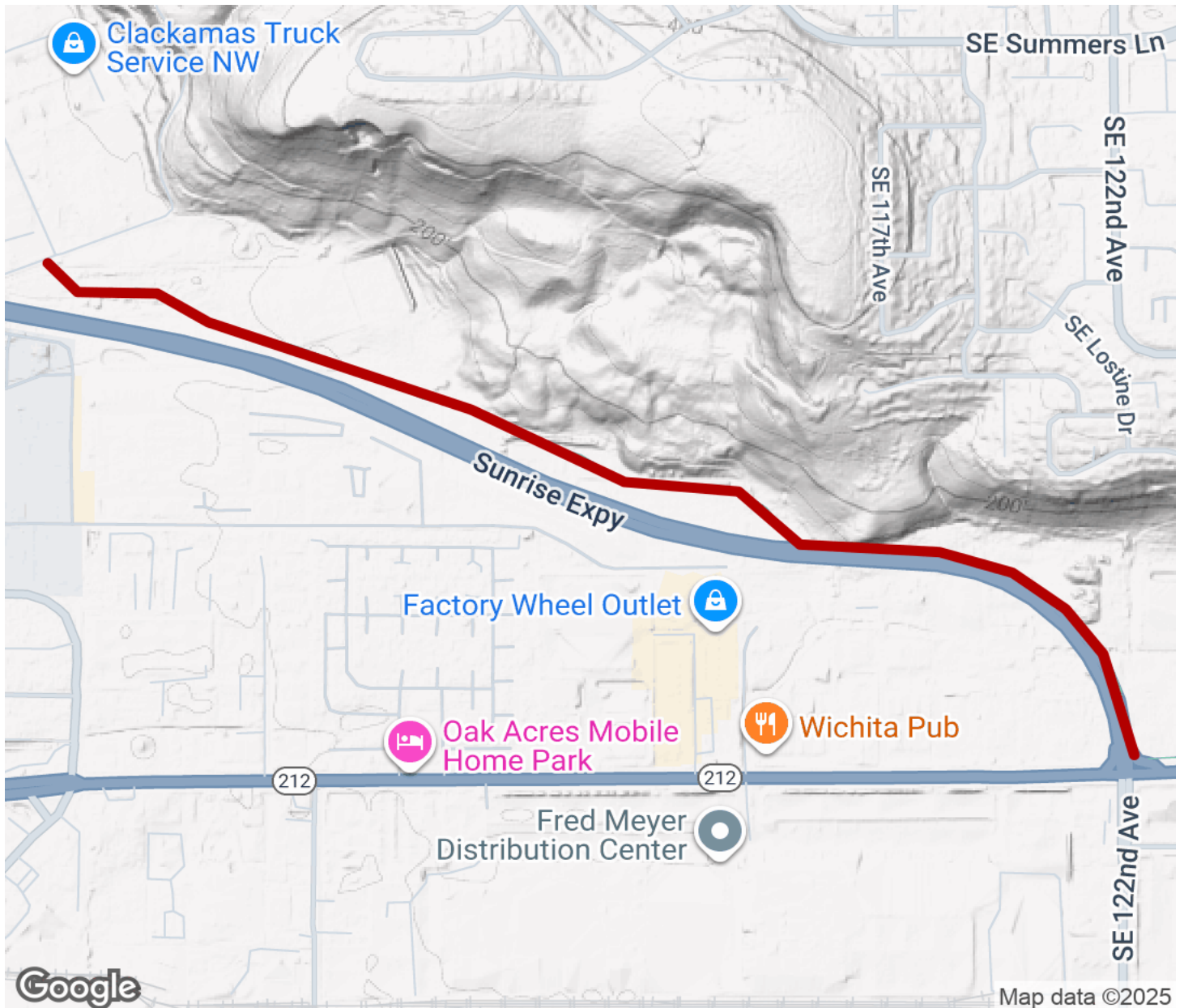
**TrailLink**  
by Rails-to-Trails Conservancy

**TrailLink.com**



# Sunrise Expressway Shared-Use Path

Oregon



Trailhead



Restroom



Parking



Water Fountain



Tunnel



**TrailLink**  
by Rails-to-Trails Conservancy

**TrailLink.com**