



2026

TrailLink Unlimited 

Guides



Sunrise Expressway Shared-Use Path

Oregon



Sunrise Expressway Shared-Use Path

Oregon

Located in the Portland suburb of Clackamas, this trail extends just over 1 mile. The paved pathway begins on SE Mather Road, in an



Located in the Portland suburb of Clackamas, this trail extends just over 1 mile. The paved pathway begins on SE Mather Road, in an industrial part of town, and heads southeast, paralleling the Sunrise Expressway (State Route 224) for the final half of the trail. There are lane markings on the trail, and signage marking the beginning and the end of the trail (at the intersection of SR 224 and SR 212).



Sunrise Expressway Shared-Use Path

Oregon

States: Oregon

Counties: Clackamas

Length: 1.3miles

Trail end points: SE Mather Rd to SR 212

Trail surfaces: Asphalt

Trail category: Greenway/Non-RT

Trail activities: Bike,Inline Skating,Walking

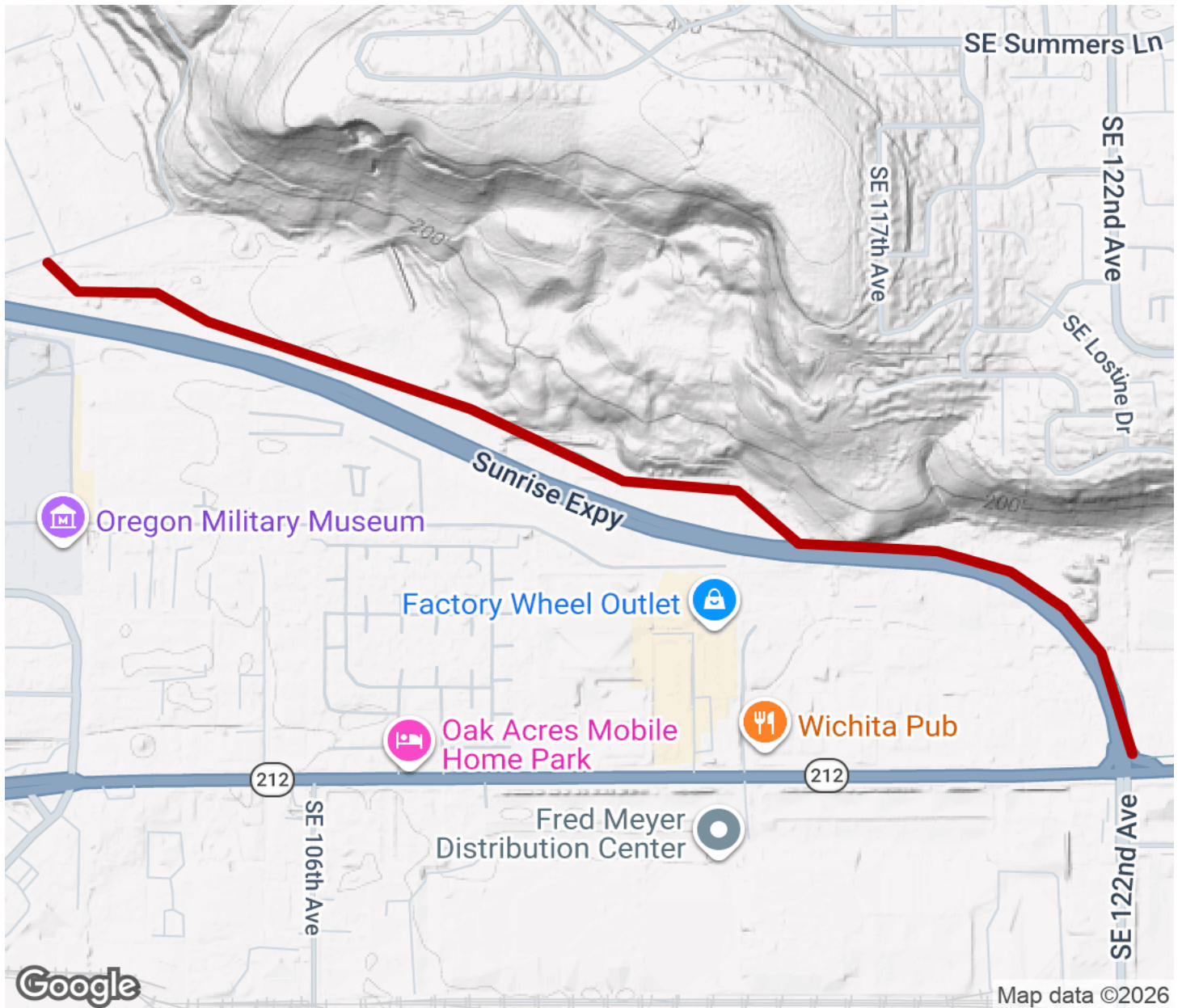
Parking & Trail Access

There is no dedicated parking for this trail.



Sunrise Expressway Shared-Use Path

Oregon



Trailhead



Restroom



Parking



Water Fountain



Tunnel



TrailLink
by Rails-to-Trails Conservancy

TrailLink.com