



2026

TrailLink Unlimited



Guides



**Brownstown  
Township  
Trail**  
*Michigan*



## Brownstown Township Trail

Michigan

*Providing nearly two and a half miles of paved trail through a mixture of suburban and industrial land, the Brownstown Township*



Providing nearly two and a half miles of paved trail through a mixture of suburban and industrial land, the Brownstown Township Trail may not be much of a destination trail, but it is a great resource for local residents looking to get around town or get in some exercise. The asphalt trail begins at a subdivision off of King Road, and the trail follows the road over the interstate and past a series of large industrial sites, turning up Allen Road and then finally turning east, where it ends at the beginning of another suburban neighborhood. While not all that impressive on its own, the sidepath trail is part of the Downriver Linked Greenways network, a developing system dedicated to connecting the communities throughout the Downriver area south of Detroit.



# Brownstown Township Trail

*Michigan*

**States:** Michigan

**Counties:** Wayne

Length: 2.4miles

**Trail end points:** Stratford Pl Blvd. to Sibley Rd.  
& Abbey Ct.

**Trail surfaces:** Asphalt

**Trail category:** Greenway/Non-RT

**Trail activities:** Bike, Inline Skating, Walking

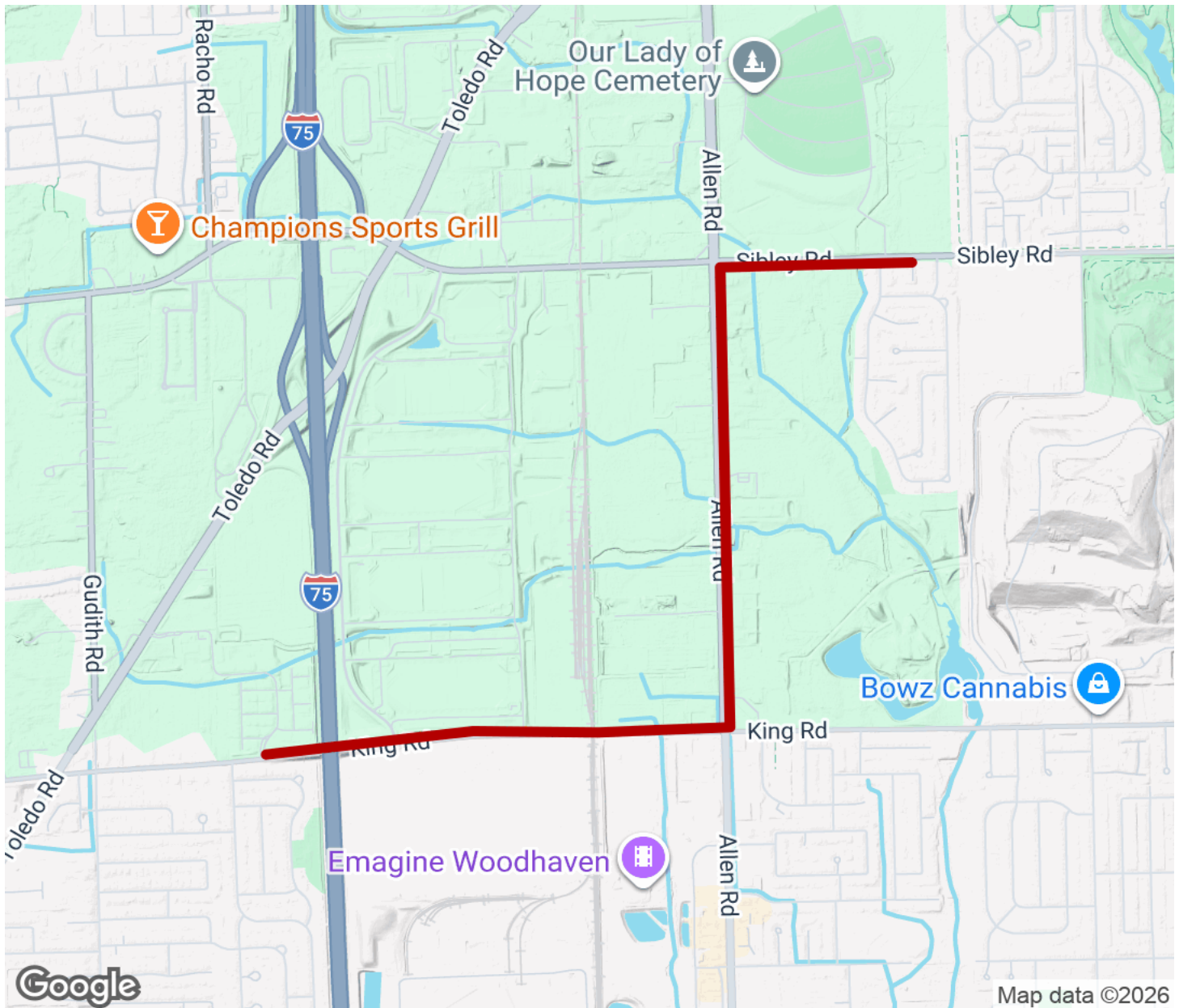
## Parking & Trail Access

No dedicated parking is available for this trail. To reach the trail from Interstate 75, take exit 34 and head southwest on Toledo Road, then turn to head east on King Road - the trail begins at the intersection with Stratford Place Boulevard.



# Brownstown Township Trail

Michigan



Trailhead



Restroom



Parking



Water Fountain



Tunnel



**TrailLink**  
by Rails-to-Trails Conservancy

**TrailLink.com**