



2026

TrailLink Unlimited 

Guides



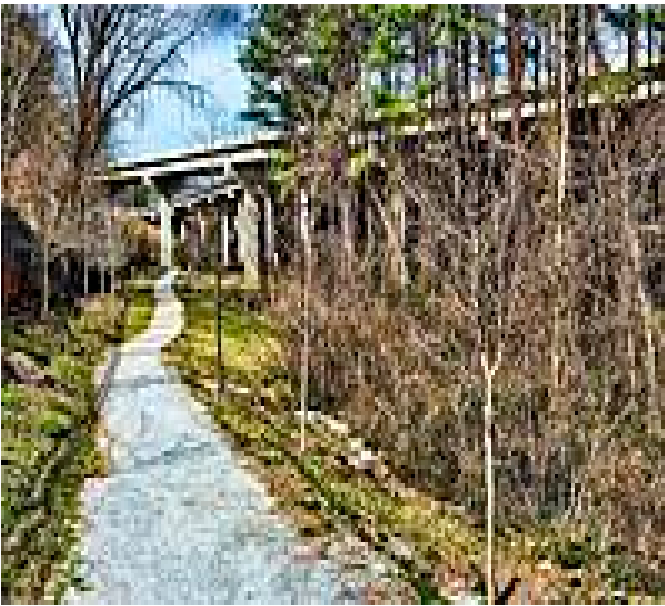
**Cheshire
Farm Trail**
Georgia



Cheshire Farm Trail

Georgia

When Georgia's Department of Transportation undertook a major construction project to build new highway infrastructure in



make the waterway their home. The Cheshire Farm Trail offers a neat little spot to squeeze in a leisurely walk, and ensures that residents have access to a dose of nature even with the busy highways nearby.

When Georgia's Department of Transportation undertook a major construction project to build new highway infrastructure in northwest Atlanta, local organizations pushed to make sure that the state remembered to factor in walkability and access to natural space along Peachtree Creek in their plans. The end result of that advocacy is the Cheshire Farm Trail, a charming half-mile gravel trail that passes under the highway ramps and over the creek, utilizing a series of beautiful new footbridges.

The trail draws its name from its proximity to the former site of an historic farmhouse, a remnant of the area's rural history that is now occupied by suburban condominiums and roadways. Signage along the trail details some of the wildlife that trail users might spy from their vantage above the creek, including a variety of waterfowl that



Cheshire Farm Trail

Georgia

States: Georgia

Counties: Fulton

Length: 0.5miles

Trail end points: Lindbergh Dr. to Cheshire Bridge Rd.

Trail surfaces: Gravel

Trail category: Greenway/Non-RT

Trail activities: Bike, Walking

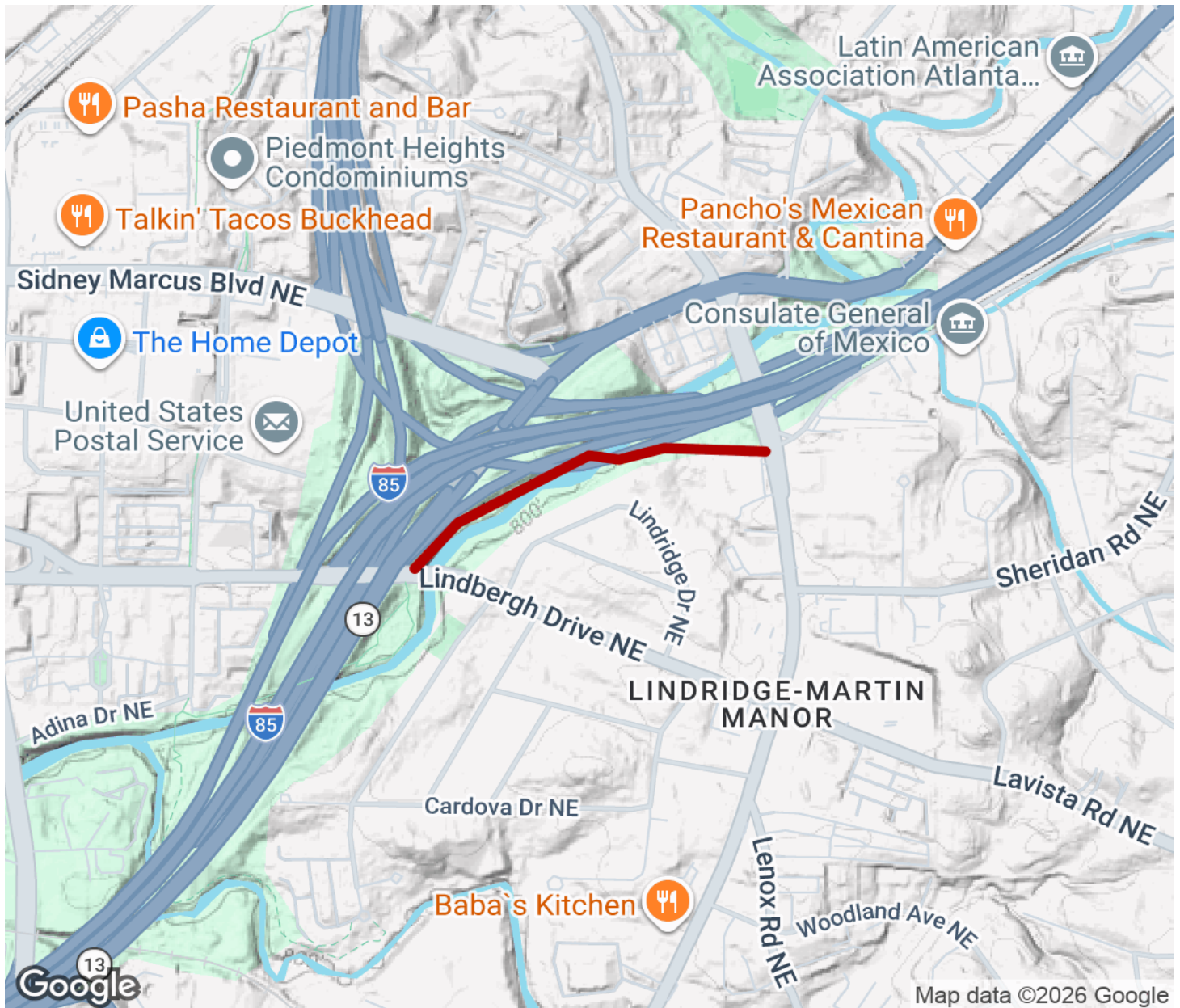
Parking & Trail Access

On-street parking is available near the southern end of the trail off of Lindbergh Drive, utilizing one of the several neighborhood streets near the trail entrance - be sure to follow any posted parking signs and regulations. The trail is also located a little over a half-mile east down Lindbergh Drive from the Lindbergh Center MARTA station.



Cheshire Farm Trail

Georgia



Trailhead



Restroom



Parking



Water Fountain



Tunnel



TrailLink
by Rails-to-Trails Conservancy

[TrailLink.com](https://www.TrailLink.com)