



2025

TrailLink Unlimited 

Guides



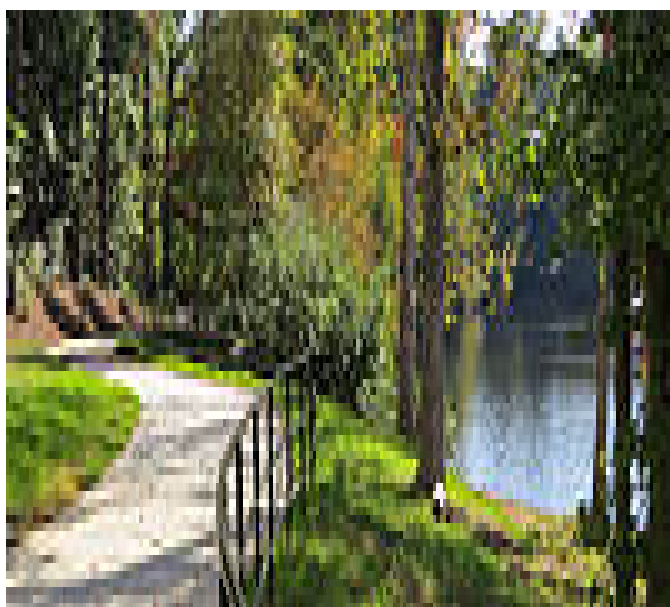
**Peachtree
Parkway Trail**
Georgia



Peachtree Parkway Trail

Georgia

The Peachtree Parkway Trail may not be much to look at, but this flat asphalt pathway that runs along the side of Peachtree Parkway



The adjacent busy road makes for a less-than-scenic companion to the trail, and there are a large number of road crossings due to the nature of the trail, but the corridor is at least largely tree-lined, offering a healthy amount of shade and some semblance of nature. At Peachtree Corners Circle, the trail crosses over to the west side of the road, continuing north until it comes to an end at the entrance to a suburban neighborhood on Wellington Lake Drive, across from a pair of tennis courts. A nice asset for the community, the Peachtree Parkway Trail is a useful route that will hopefully become even more important as the area continues to develop trails.

The Peachtree Parkway Trail may not be much to look at, but this flat asphalt pathway that runs along the side of Peachtree Parkway is one of the best ways to get around the suburban community of Peachtree Corners by foot or by bike. Stretching for just over three miles through the heart of the northeastern Atlanta suburb, the trail offers convenient access to a vast array of shops, restaurants, schools, and recreation sites. The city has already begun working on expanding their trail system with a series of other sidepath trails, utilizing the Peachtree Parkway Trail as the backbone of the area's multi-use transportation network.

The southern end of the trail picks up at Holcomb Bridge Road and heads north, providing access to a local high school and private school just a short distance off the trail.



TrailLink
by Rails-to-Trails Conservancy

TrailLink.com



Peachtree Parkway Trail

Georgia

States: Georgia

Counties: Gwinnett

Length: 3.2miles

Trail end points: Holcomb Bridge Rd. to
Wellington Lake Dr.

Trail surfaces: Asphalt, Concrete

Trail category: Greenway/Non-RT

Trail activities: Bike, Inline

Skating, Wheelchair Accessible, Walking

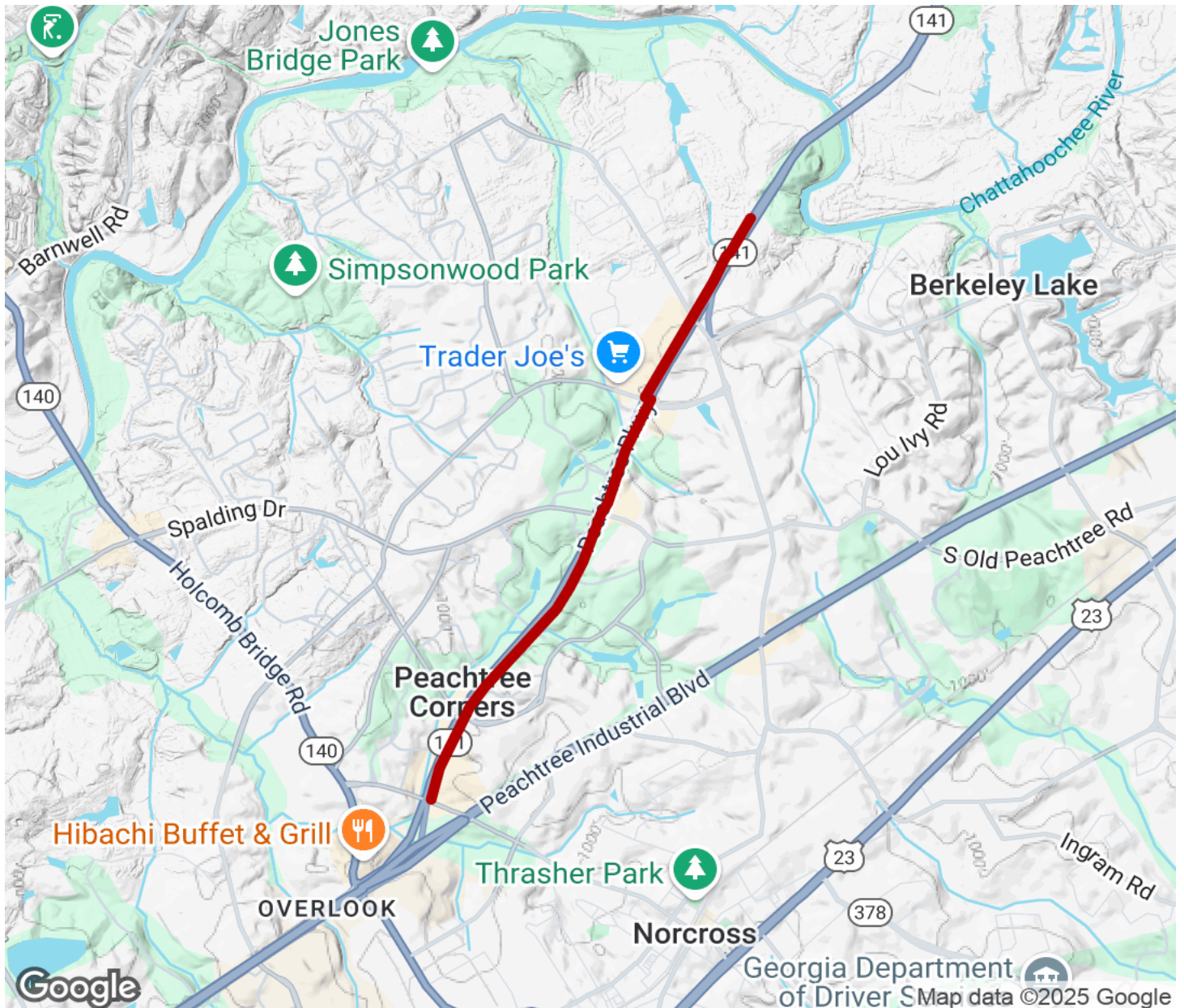
Parking & Trail Access

No dedicated parking is available for this trail; parking may be available at various businesses along the route of the trail. Be sure to follow any posted parking signs and regulations.



Peachtree Parkway Trail

Georgia



Trailhead



Restroom



Parking



Water Fountain



Tunnel



TrailLink
by Rails-to-Trails Conservancy

TrailLink.com