



2025

TrailLink Unlimited 

Guides



# Lake Renwick Bikeway

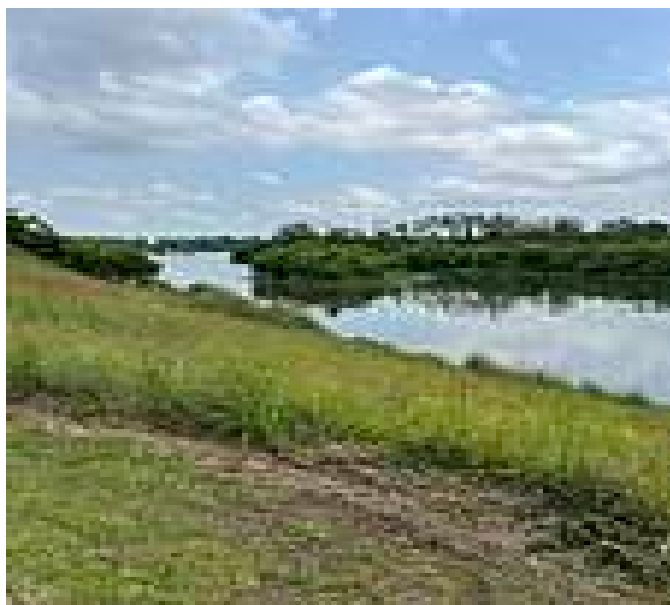
*Illinois*



## Lake Renwick Bikeway

*Illinois*

*Lake Renwick Preserve is home to an artificial lake of the same name that was created from former quarries where aggregates for*



Lake Renwick Preserve is home to an artificial lake of the same name that was created from former quarries where aggregates for concrete were once mined. Today, the lake is a recreational amenity in Will County and has a wealth of birdlife, particularly waterfowl like herons, egrets and cormorants. A 3.35-mile multiuse trail wraps around the property. The asphalt trail is usable year-round, for biking, walking and in-line skating most of the year, with cross-country skiing and snowshoeing in the winter.



**TrailLink**  
by Rails-to-Trails Conservancy

**TrailLink.com**



# Lake Renwick Bikeway

*Illinois*

**States:** Illinois

**Counties:** Will

Length: 3.35miles

**Trail end points:** Lockport Street to Renwick Road

**Trail surfaces:** Asphalt

**Trail category:** Greenway/Non-RT

**Trail activities:** Bike,Inline

Skating,Walking,Cross Country Skiing

## Parking & Trail Access

The trail has several access points. If arriving by car, park at the Plainfield trailhead of the Preserve, off Lockport Street (22525 Lockport St, Plainfield, IL). Just west of that is another parking area on Lockport Street, the Turtle Lake entrance, located at 23113 Lockport St, Plainfield, IL. Further west of that, there's a bike-ped access point to the trail near S. Miles Avenue. You can also get on the trail by bike or on foot at Renwick Road, just west of I-55.



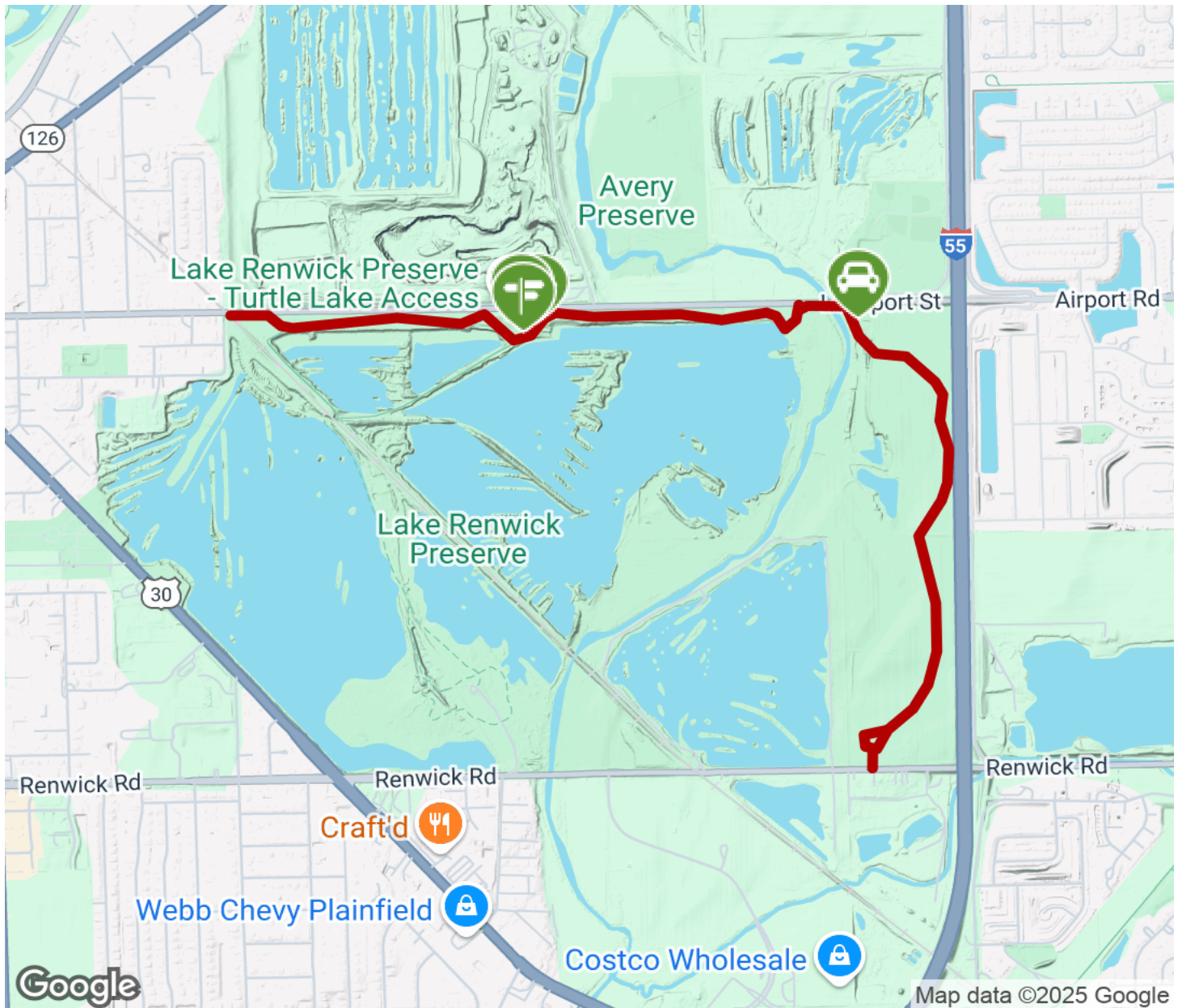
**TrailLink**  
by Rails-to-Trails Conservancy

**TrailLink.com**



# Lake Renwick Bikeway

Illinois



Trailhead



Restroom



Parking



Water Fountain



Tunnel



**TrailLink**  
by Rails-to-Trails Conservancy

**TrailLink.com**