



2025

TrailLink Unlimited 

Guides



## Volcano Heights Trail

*New Mexico*



## Volcano Heights Trail

New Mexico

*Situated atop a mesa that offers gorgeous views of the canyons of Petroglyph National Monument and the Sandia Mountains that*



of Camino Alto NW; the trail should help ensure that future residents of the planned neighborhood will have access to a lovely recreation path right in their backyard.

Situated atop a mesa that offers gorgeous views of the canyons of Petroglyph National Monument and the Sandia Mountains that loom over the city far to the east, the Volcano Heights Trail is an impressively scenic, paved recreation pathway located in a developing subdivision in northwestern Albuquerque.

The western end of the trail begins at a connection to the [Boca Negra Trail](#) on Unser Boulevard, then heads southeast along the side of Compass Drive, following the ridge above Boca Negra Canyon. The trail continues around the edge of this growing subdivision, with the high-desert shrubland and scenic vistas to the south and east standing in sharp contrast to the freshly built homes and roads to the north and west. The Volcano Heights Trail currently ends in the east in an open area just south



**TrailLink**  
by Rails-to-Trails Conservancy

**TrailLink.com**



# Volcano Heights Trail

*New Mexico*

**States:** New Mexico

**Counties:** Bernalillo

Length: 1.6miles

**Trail end points:** Unser Blvd. (Boca Negra Trail)  
to South of Camino Alto NW

**Trail surfaces:** Asphalt

**Trail category:** Greenway/Non-RT

**Trail activities:** Bike, Inline Skating, Walking

## Parking & Trail Access

No dedicated parking is available for this trail as of 2019.



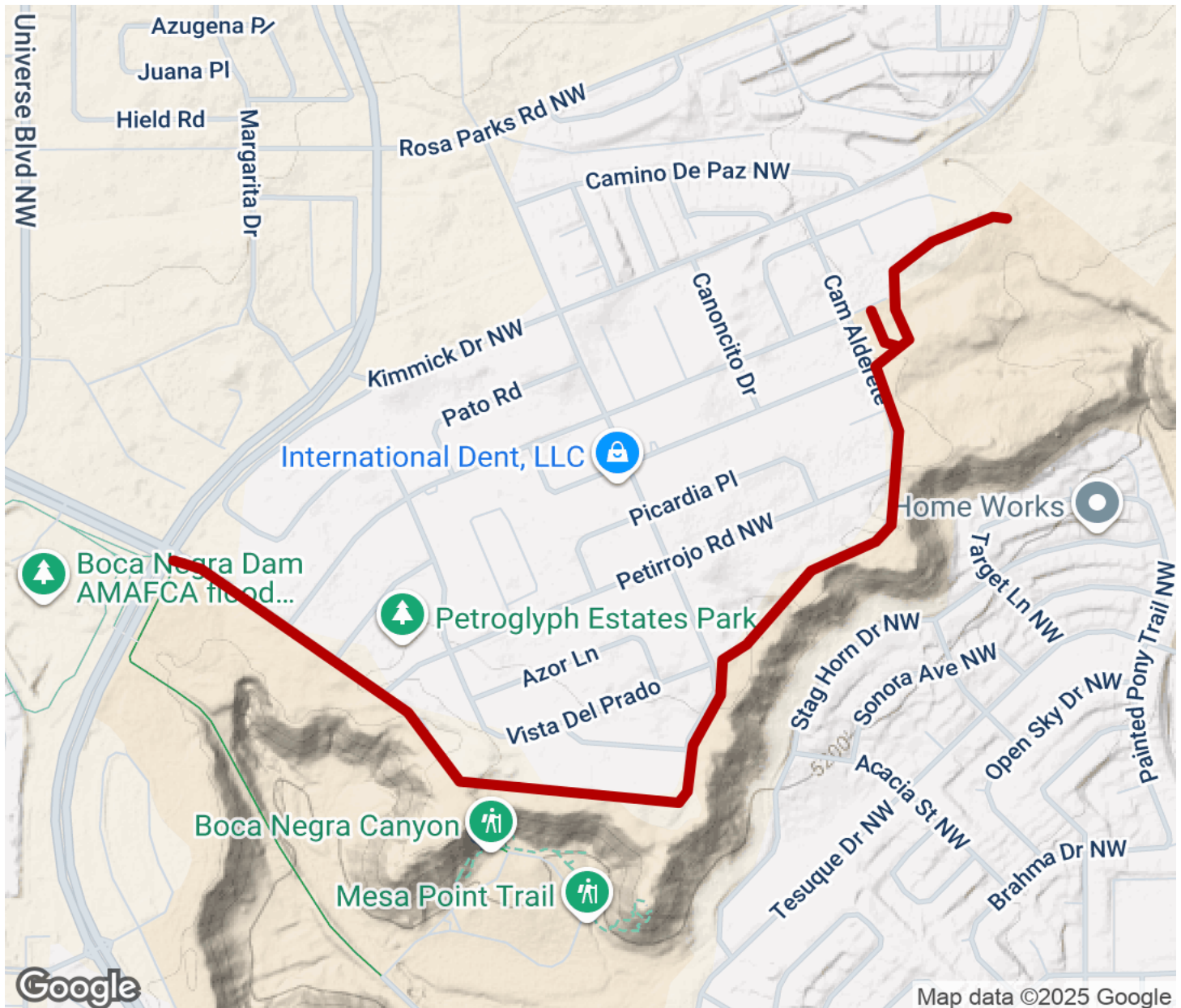
**TrailLink**  
by Rails-to-Trails Conservancy

**TrailLink.com**



# Volcano Heights Trail

New Mexico



Trailhead



Restroom



Parking



Water Fountain



Tunnel



**TrailLink**  
by Rails-to-Trails Conservancy

**TrailLink.com**