



2025

TrailLink Unlimited 

Guides   



**Orr Ditch Trail**  
*Nevada*



## Orr Ditch Trail

Nevada

*Part of a network of recreation paths in the suburban northern reaches of Sparks, Nevada, the Orr Ditch Trail gets its name from*



up to the northern edge of the suburban development. With its consistently flat route and very few road crossings, the Orr Ditch Trail makes for a short but sweet trail experience.

Part of a network of recreation paths in the suburban northern reaches of Sparks, Nevada, the Orr Ditch Trail gets its name from the irrigation channel that the trail follows for about half of its length. Starting in the south at Los Altos Parkway, the concrete pathway heads north along a corridor sandwiched between rows of houses. The trail leads into Kestrel Park, a small neighborhood park and playground site, where it joins the route of the Orr Ditch as it continues north.

The ditch provides a nice, green corridor to accompany the trail - nearby cul-de-sacs have easy access to the trail, giving residents a highly convenient exercise and recreation path. Reaching Panama Drive, the trail continues across the road and a hair to the west, where the surface changes to a gray cobblestone and continues



**TrailLink**  
by Rails-to-Trails Conservancy

**TrailLink.com**



## Orr Ditch Trail

*Nevada*

**States:** Nevada

**Counties:** Washoe

Length: 1.2miles

**Trail end points:** Los Altos Pkwy. to Kiley Pkwy.

**Trail surfaces:** Brick,Concrete

**Trail category:** Greenway/Non-RT

**Trail activities:** Bike,Inline Skating,Walking

## Parking & Trail Access

No dedicated trail parking is available, but on-street parking is available close to the route of the trail. Be sure to follow any posted parking signs and regulations.



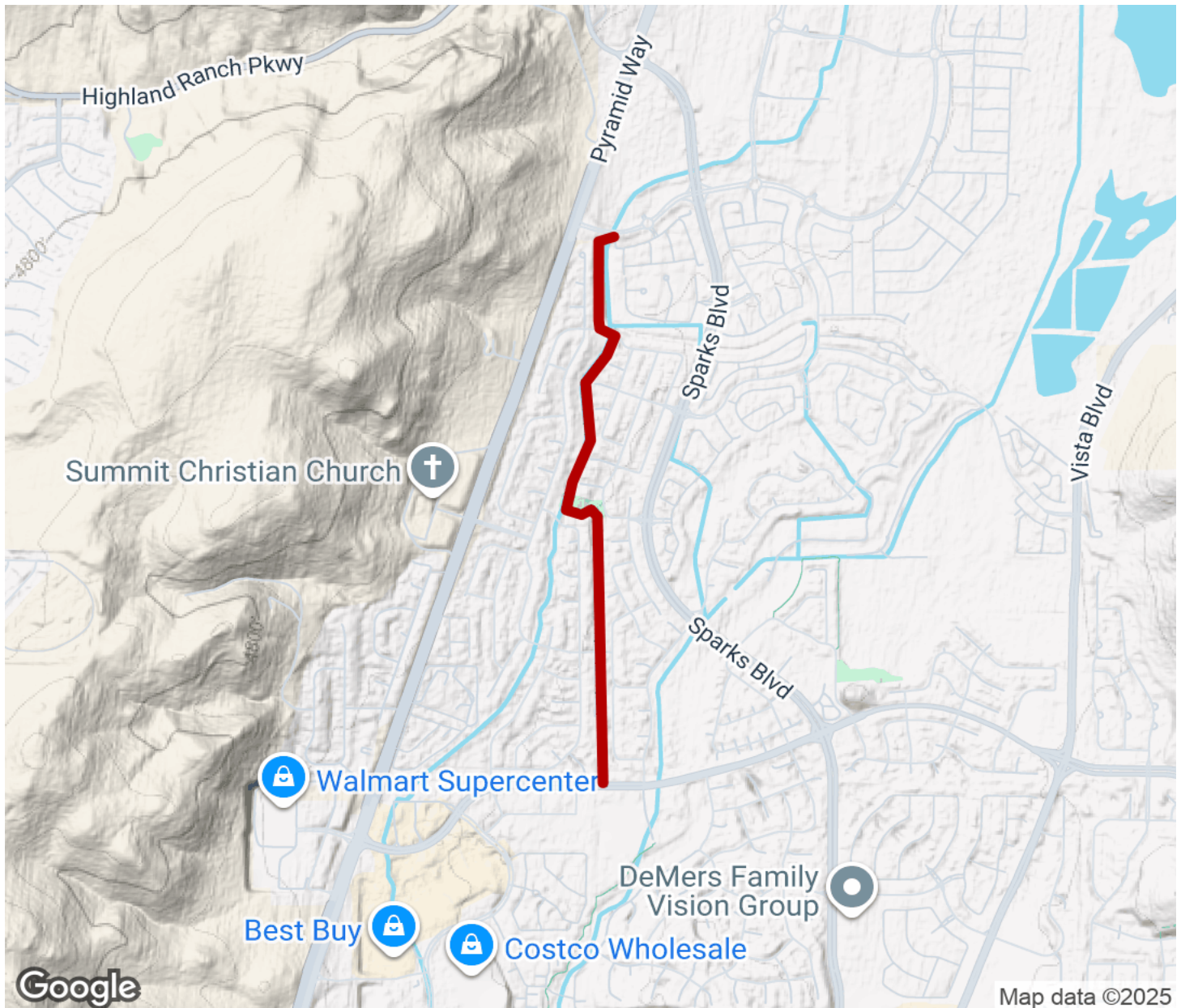
**TrailLink**  
by Rails-to-Trails Conservancy

**TrailLink.com**



# Orr Ditch Trail

Nevada



Map data ©2025



Trailhead



Restroom



Parking



Water Fountain



Tunnel



**TrailLink**  
by Rails-to-Trails Conservancy

**TrailLink.com**