



2024

TrailLink Unlimited



Guides



**Kiley Ranch  
South Trail**  
*Nevada*



## Kiley Ranch South Trail

Nevada

*The Kiley Ranch South Trail is a concrete trailway that runs through the Kiley Ranch developments in suburban Sparks,*



The Kiley Ranch South Trail is a concrete trailway that runs through the Kiley Ranch developments in suburban Sparks, Nevada. Following the course of the North Truckee Drain, with [another trail](#) on the opposite side of the waterway for much of its length, the trail helps connect the various neighborhoods along its route and gives residents a path for exercise and recreation.

The bulk of the trail runs between the drain and Promedio Parkway - in the north, the trail traces the perimeter of a small development just to the north of the charming and lovely Bodega Park, a neighborhood park and recreation site. Along with other nearby trails, the Kiley Ranch South Trail helps to ensure that even residents in this suburban enclave have opportunities for off-road transportation and a chance to get in some quality outdoor recreation.



# Kiley Ranch South Trail

*Nevada*

**States:** Nevada

**Counties:** Washoe

Length: 1.6miles

**Trail end points:** Tree Swallow Ln. to Village  
Knoll Dr.

**Trail surfaces:** Asphalt, Concrete

**Trail category:** Greenway/Non-RT

**Trail activities:** Bike, Inline Skating, Walking

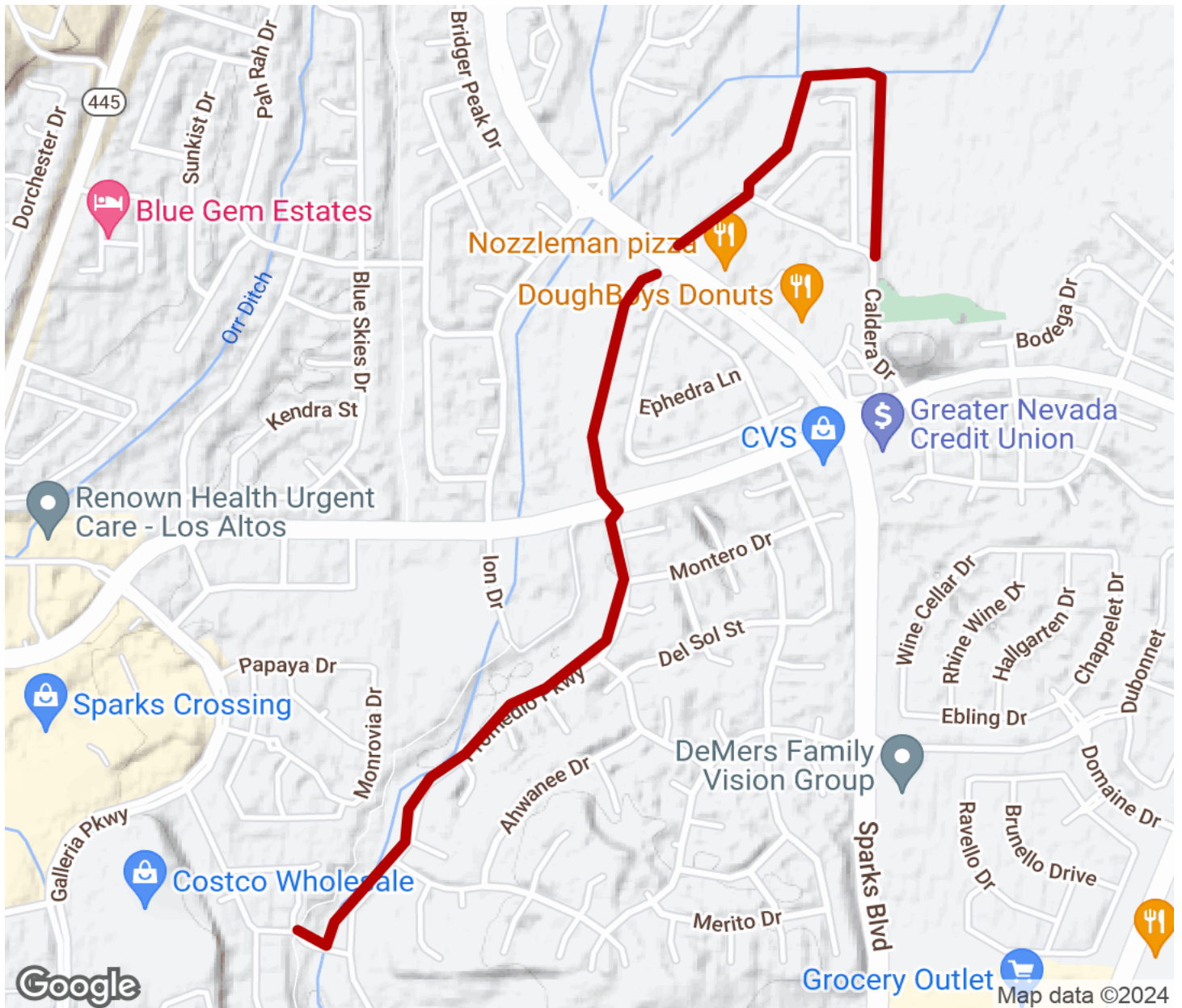
## Parking & Trail Access

No dedicated parking is available for this trail - parking may be available on-street near the trail or at nearby local businesses. Be sure to follow any posted parking signs and regulations.



# Kiley Ranch South Trail

Nevada



Trailhead



Restroom



Parking



Water Fountain



Tunnel



**TrailLink**  
by Rails-to-Trails Conservancy

**TrailLink.com**