



2026

TrailLink Unlimited 

Guides



**Lemmon  
Valley Trail**  
*Nevada*



## Lemmon Valley Trail

Nevada

*Spanning over three miles along the side of Lemmon Drive in the northern valleys above the city of Reno, the Lemmon Valley Trail*



areas on either end of the trail are linked by a middle segment free from most development, with the Swan Lake Nature Study Area across the road to the west. This wetlands area is a popular birdwatching destination - although as of 2019 problems with flooding have caused issues at the lake and surrounding areas. Trail users should be sure to research current flooding conditions before making their journey.

Spanning over three miles along the side of Lemmon Drive in the northern valleys above the city of Reno, the Lemmon Valley Trail offers a solid out-and-back trail experience that feels more removed than its roadside nature would suggest. While the asphalt surface has seen its share of wear-and-tear from years of exposure to sun and the elements (shade is nowhere to be found on this trail), the route is relatively free from road crossings and interruptions, making it a good spot to get in some running or biking miles in northern Reno, with some nice views of the surrounding mountains and hills in the distance.

The trail begins in the south along the road just past Surge Street and the trail continues north as the road curves through the valley around Swan Lake. The residential



**TrailLink**  
by Rails-to-Trails Conservancy

**TrailLink.com**



# Lemmon Valley Trail

*Nevada*

**States:** Nevada

**Counties:** Washoe

Length: 3.5miles

**Trail end points:** North of Surge St. to Oregon Blvd.

**Trail surfaces:** Asphalt

**Trail category:** Greenway/Non-RT

**Trail activities:** Bike,Inline Skating,Walking

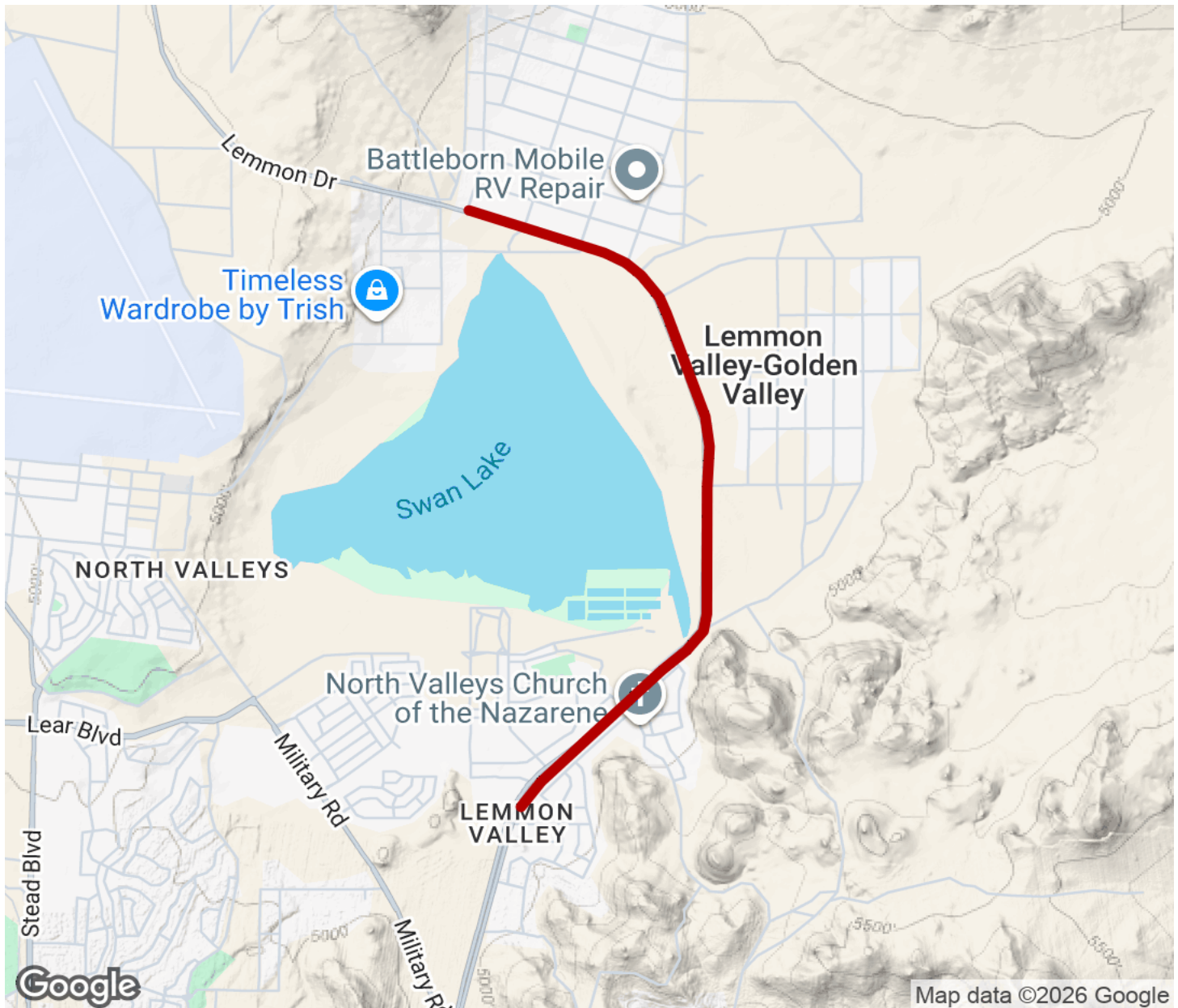
## Parking & Trail Access

No dedicated trail parking is available for this trail. To reach the trail, take MLK Memorial Highway northwest out of Reno and exit heading north on Lemmon Drive.



# Lemmon Valley Trail

Nevada



Trailhead



Restroom



Parking



Water Fountain



Tunnel



**TrailLink**  
by Rails-to-Trails Conservancy

**TrailLink.com**