



2026

TrailLink Unlimited



Guides



# Fort Madison PORT Trail

*Iowa*



## Fort Madison PORT Trail

Iowa

*Named for Fort Madison's community trails group, Promoting Outdoor Recreational Trails, the Fort Madison PORT Trail is a*



Future plans include extending the trail further west to reach the local community hospital, eventually creating a looping trail system across the area. For now, the PORT Trail serves as a lovely recreational path that will hopefully form a strong backbone for the developing trail network.

Named for Fort Madison's community trails group, Promoting Outdoor Recreational Trails, the Fort Madison PORT Trail is a developing network of multi-use trails in the riverside city's western outskirts. As of 2019, two out of a planned five phases of the trail have been completed, allowing trail users to explore a pleasant, natural corridor that leads into the city's Ivanhoe Park.

Starting in the north, the trail heads south from the sidewalk along Bluff Road, passing behind a row of homes and into a tranquil, tree-lined corridor. The trail then diverges into two paths, with one running west over to 48th Street, and one continuing south into the small neighborhood park, home to a wide variety of athletic facilities, picnic areas, and a skate park.



# Fort Madison PORT Trail

Iowa

**States:** Iowa

**Counties:** Lee

Length: 1miles

**Trail end points:** Bluff Rd. to Ivanhoe Park

**Trail surfaces:** Concrete

**Trail category:** Greenway/Non-RT

**Trail activities:** Bike,Inline Skating,Walking

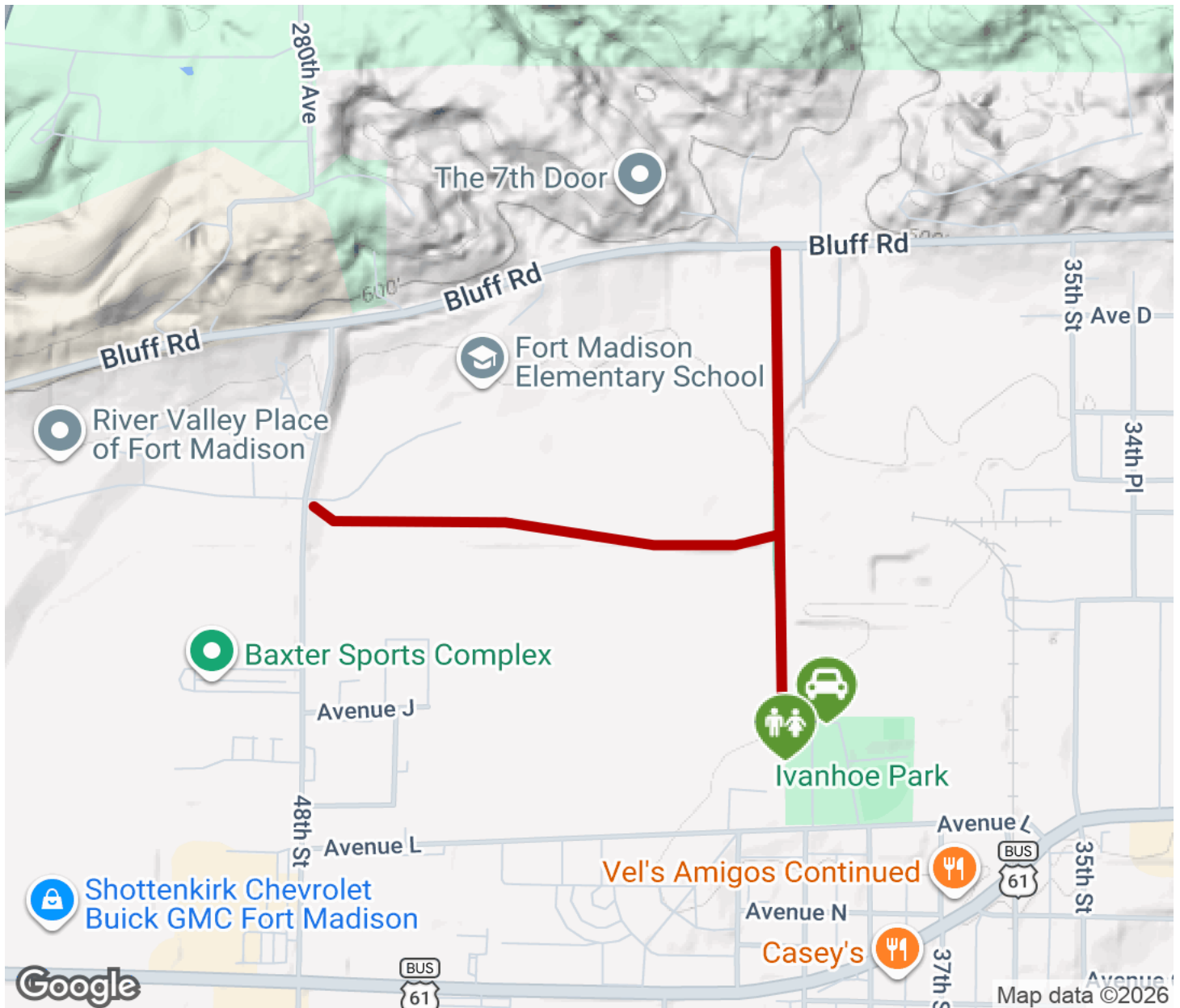
## Parking & Trail Access

Parking and restrooms are available at Ivanhoe Park; the park entrance is located by the intersection of Avenue L and 38th Street.



# Fort Madison PORT Trail

Iowa



Trailhead



Restroom



Parking



Water Fountain



Tunnel



**TrailLink**  
by Rails-to-Trails Conservancy

**TrailLink.com**