



2024

TrailLink Unlimited 

Guides



# Kingsley Community Biking and Walking Trail

*Iowa*



# Kingsley Community Biking and Walking Trail

Iowa

*Located about thirty miles northeast of Sioux City, the rural community of Kingsley is surrounded by miles and miles of Iowa*



means of safely walking and biking around. Encircling community destinations like schools and parks, the trail is an asset that enhances these facilities, bringing people together while also offering some impressive views of the fields and farmland just outside of town.

Located about thirty miles northeast of Sioux City, the rural community of Kingsley is surrounded by miles and miles of Iowa farmland. Within the small city limits, however, the Kingsley Community Biking and Walking Trail provides a series of concrete, multi-use pathways that allow residents the chance to get in some quality exercise and recreation. Two separate segments make up the community trail system, with one surrounding a park and athletic fields in the southwestern part of town, and the other located straight north out of town along Main Street. Trail users can connect between them by following low-stress local streets if they so choose, although be warned that not all streets in the town have sidewalks.

These short trails help to link the residential neighborhoods in the city, and give residents a handy



# Kingsley Community Biking and Walking Trail

Iowa

**States:** Iowa

**Counties:** Plymouth

Length: 1.5miles

**Trail end points:** Quest Ave. to North of Main St.

**Trail surfaces:** Concrete

**Trail category:** Greenway/Non-RT

**Trail activities:** Bike, Inline Skating, Walking

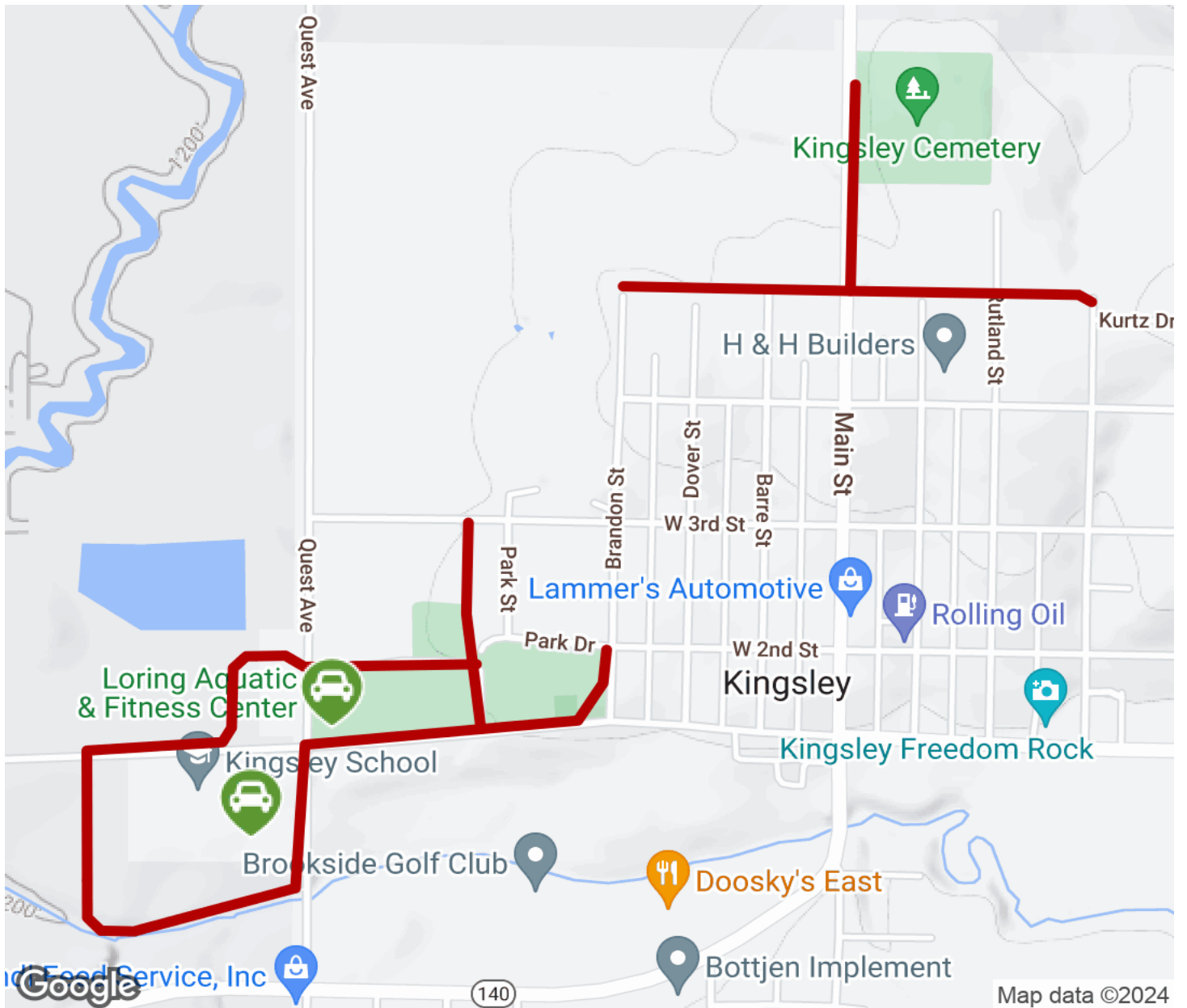
## Parking & Trail Access

Parking is available at the schools and fitness center located near the southwestern trail segment, right by the intersection of 322nd Street and Quest Avenue to the west of downtown Kingsley.



# Kingsley Community Biking and Walking Trail

Iowa



Trailhead



Restroom



Parking



Water Fountain



Tunnel



**TrailLink**  
by Rails-to-Trails Conservancy

**TrailLink.com**