



2025

TrailLink Unlimited 

Guides



Mormon Handcart Trail

Iowa



Mormon Handcart Trail

Iowa

Located in a creekside park on the outskirts of the campus of the Univeristy of Iowa, visitors who travel on the Mormon Handcart



between parts of the Clear Creek Trail, which follows the scenic creek corridor into Coralville and out towards Tiffin.

For those interested in the history of the area, or those just looking for a pleasant place for a short walk or jog, the Mormon Handcart Trail is a neat little hidden gem.

Located in a creekside park on the outskirts of the campus of the Univeristy of Iowa, visitors who travel on the Mormon Handcart Trail will learn quite a bit about the journey that the Mormon handcart settlers made in the mid-1800s - although fortunately the half-mile trail makes for a much more manageable journey than the one the settlers had to make.

The short, asphalt trail features informational signage along the route, providing trail users with accounts of the mass migration that Mormon settlers made from the Midwest out to Utah - many of whom towed their belongings behind them in handcarts since they were unable to afford horses or oxen. The trail provides a nice, leisurely route through a forested area to the south of Clear Creek, and also acts as a shortcut that connects



Mormon Handcart Trail

Iowa

States: Iowa

Counties: Johnson

Length: 0.5miles

Trail end points: Clear Creek Trail to Hawkeye Ct.

Trail surfaces: Asphalt

Trail category: Greenway/Non-RT

Trail activities: Bike, Inline Skating, Walking

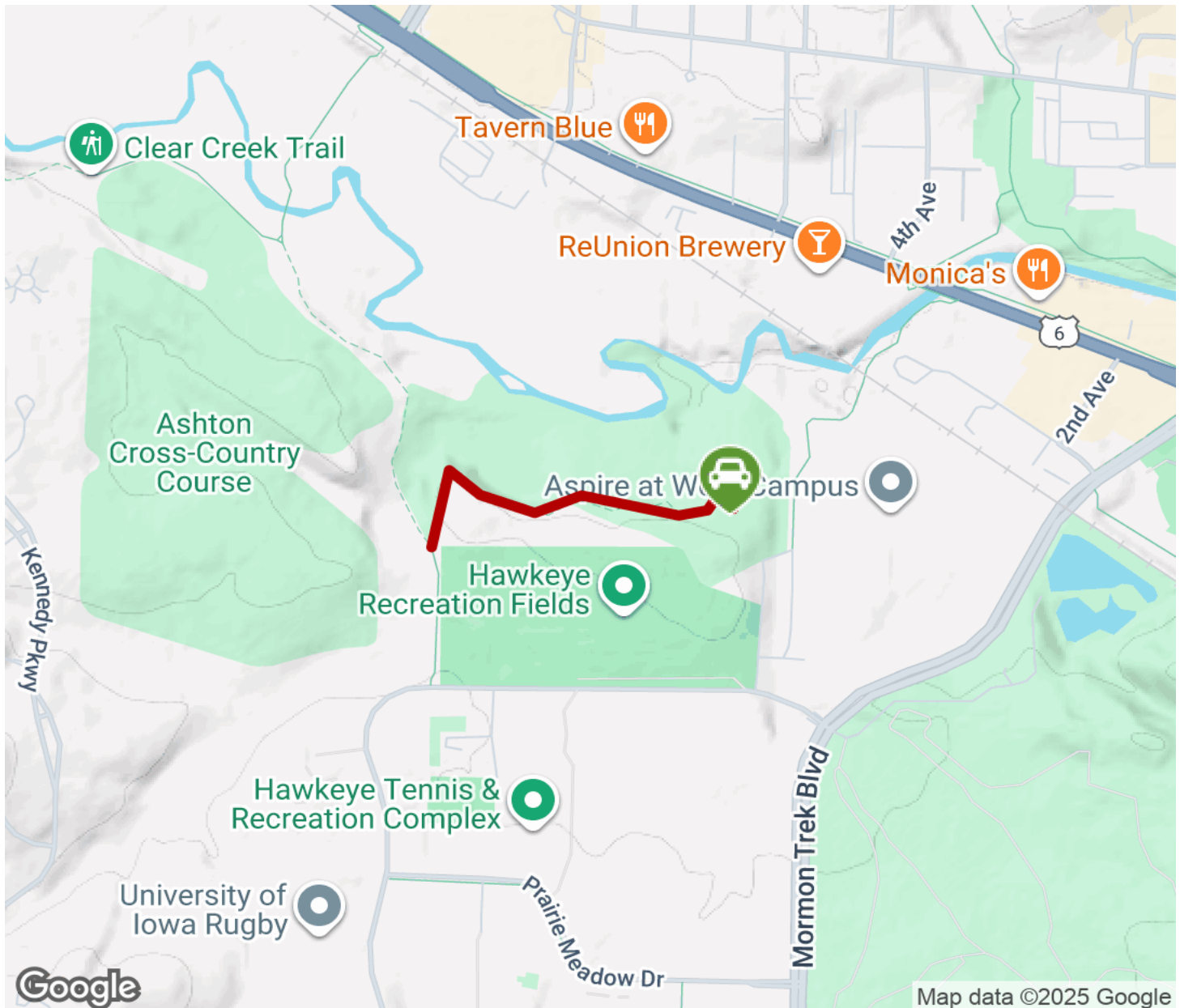
Parking & Trail Access

Parking is available at the eastern end of the trail at the trailhead located off of Hawkeye Court, just north from Hawkeye Park Road.



Mormon Handcart Trail

Iowa



Trailhead



Restroom



Parking



Water Fountain



Tunnel



TrailLink
by Rails-to-Trails Conservancy

TrailLink.com