



2025

TrailLink Unlimited



Guides



# Squires Road Trail

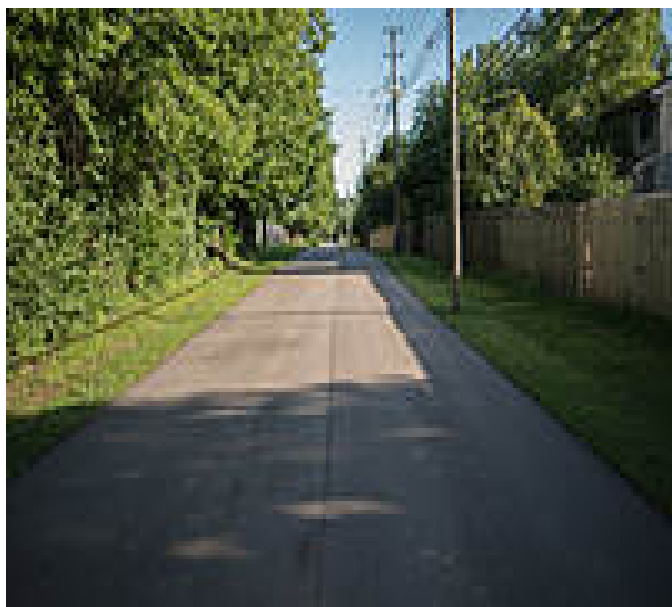
*Kentucky*



## Squires Road Trail

Kentucky

*Squires Road Trail is a 1.3 mile multiuse trail on the southeast edge of Lexington, KY. The trail begins on Squires Road and threads*



Squires Road Trail is a 1.3 mile multiuse trail on the southeast edge of Lexington, KY. The trail begins on Squires Road and threads through neighborhoods until its terminus at Summerhill Road. Residents make use the trail to get some exercise, walk dogs or socialize. The trail is wide asphalt with bollards at the access points to prevent motor vehicles from using it. Use it to get to Berry Hill Park at around the midway point, a shopping center right across from the park, and Squires Elementary School close to the Summerhill Road end.



# Squires Road Trail

*Kentucky*

**States:** Kentucky

**Counties:** Fayette

Length: 1.3miles

**Trail end points:** Squires Road to Summerhill Road

**Trail surfaces:** Asphalt

**Trail category:** Greenway/Non-RT

**Trail activities:** Bike, Inline Skating, Walking

## Parking & Trail Access

If driving, you can begin your journey at Berry Hill Park (3489 Buckhorn Dr, Lexington). The parking lot is off Buckhorn Drive, and near the skatepark. Then head north or south on the trail.



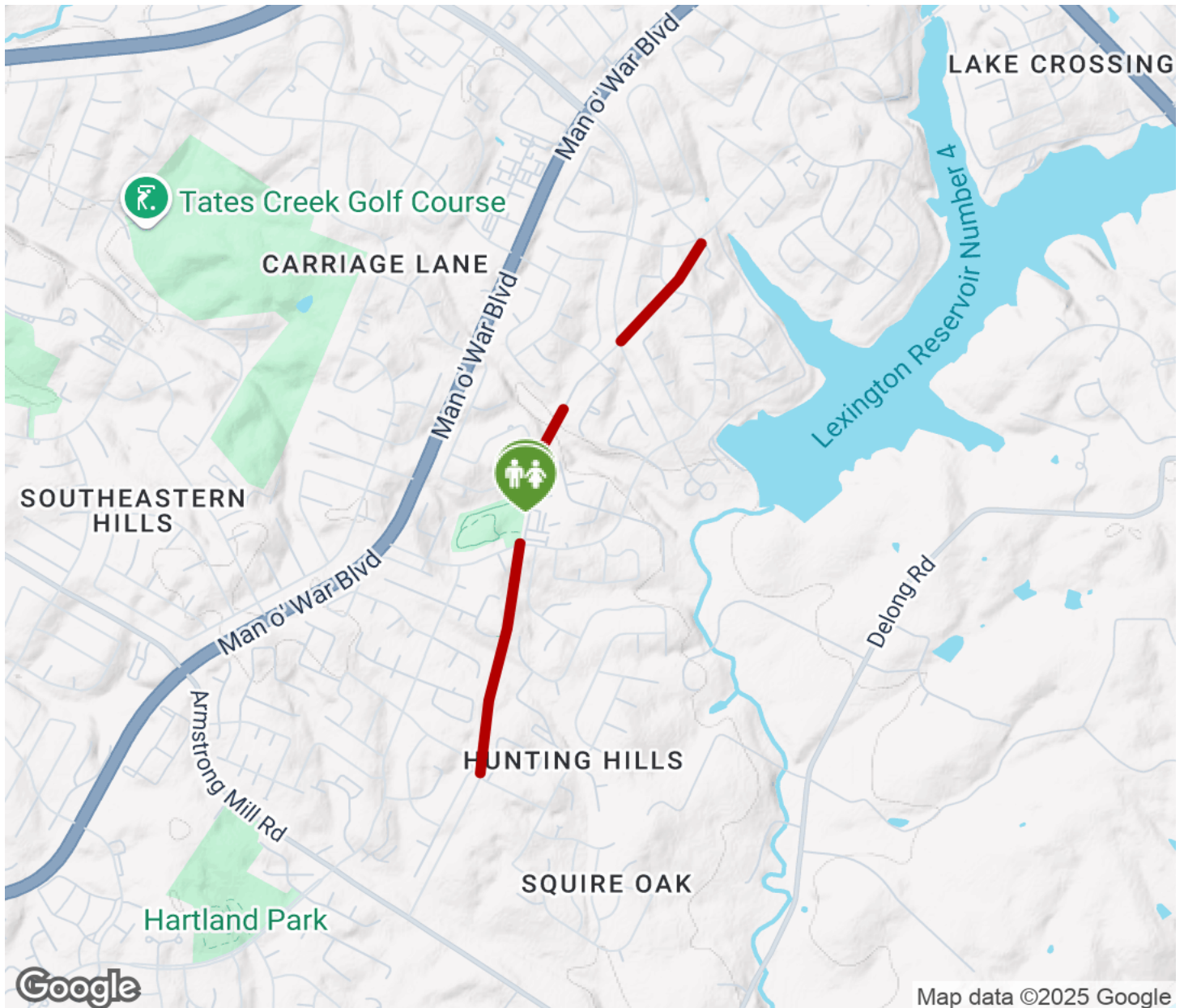
**TrailLink**  
by Rails-to-Trails Conservancy

**TrailLink.com**



# Squires Road Trail

Kentucky



Trailhead



Restroom



Parking



Water Fountain



Tunnel



**TrailLink**  
by Rails-to-Trails Conservancy

**TrailLink.com**