



2025

TrailLink Unlimited 

Guides



**Driggs  
Pathways**  
*Idaho*



## Driggs Pathways

Idaho

*The little town of Driggs is nestled in the Teton Valley, on the west side of the Grand Teton range. Its best known as an outdoor*



way to the neighboring Teton Valley town of Victor.

The little town of Driggs is nestled in the Teton Valley, on the west side of the Grand Teton range. Its best known as an outdoor recreation and resort town, with activities ranging from skiing and snowboarding, to hot air ballooning and flyfishing. The town itself maintains an Old West charm with a contemporary feel. Within the town, a system of paved pathways provides an alternative to driving. The Driggs Pathway system stretches north-south, from one end of the town to the other, either adjacent to Main Street/ Highway 33, or parallel to it.

The paved trails can be used to reach businesses as well as community destinations like schools and parks. The shared use paths also allow visitors and residents in town to connect to the [Victor to Driggs Rail Trail](#) on the south side. That trail travels 7.7 miles within a railroad right-of-



**TrailLink**  
by Rails-to-Trails Conservancy

**TrailLink.com**



## Driggs Pathways

*Idaho*

**States:** Idaho

**Counties:** Teton

Length: 3miles

**Trail end points:** Highway 33 to Victor-Driggs

Rail Trail

**Trail surfaces:** Asphalt

**Trail category:** Greenway/Non-RT

**Trail activities:** Bike, Inline Skating, Walking

## Parking & Trail Access



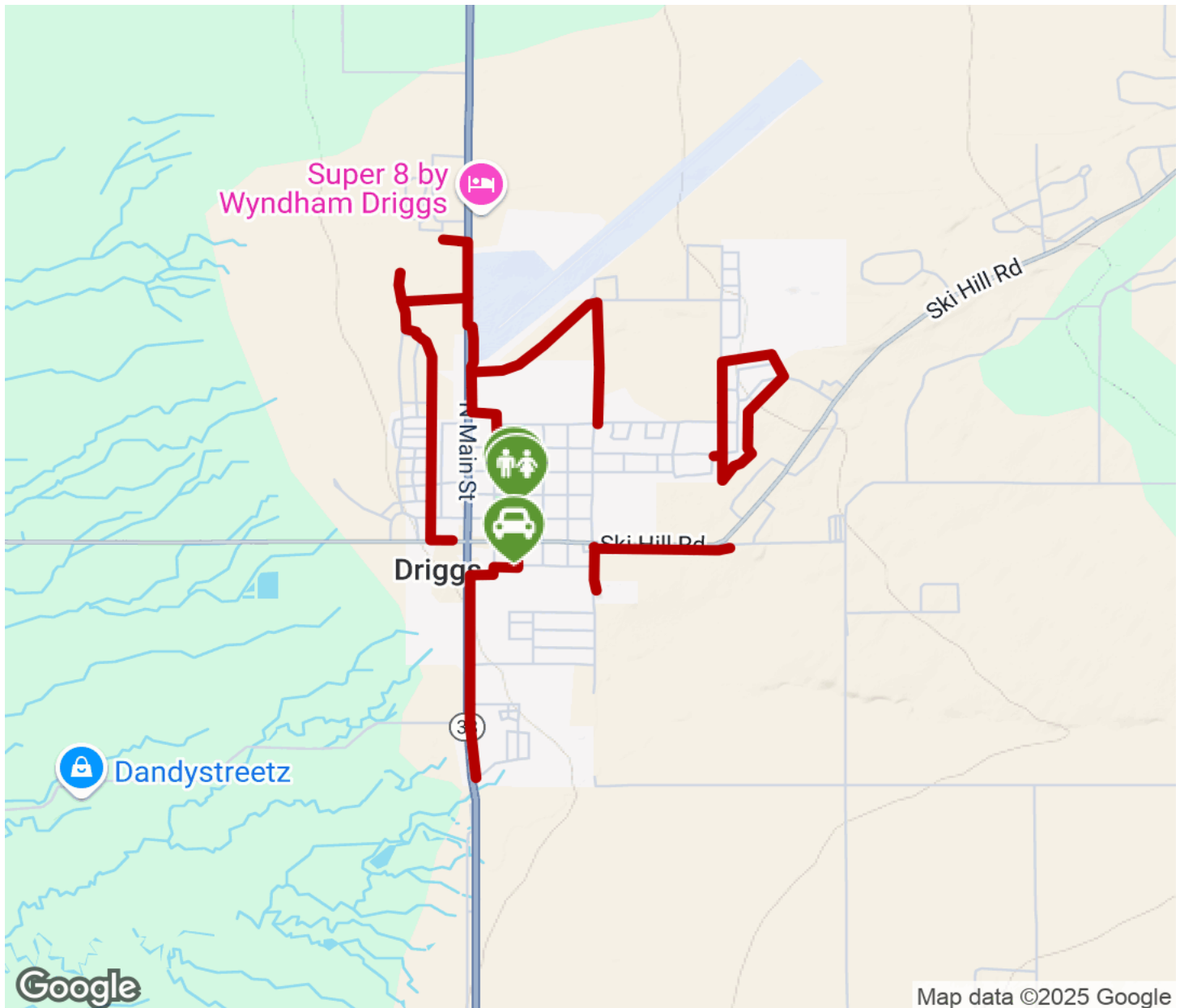
**TrailLink**  
by Rails-to-Trails Conservancy

**TrailLink.com**



# Driggs Pathways

Idaho



Trailhead



Restroom



Parking



Water Fountain



Tunnel



**TrailLink**  
by Rails-to-Trails Conservancy

**TrailLink.com**